

# 2SC2230(A)

## / Descriptions

KF S0) CD      E GE

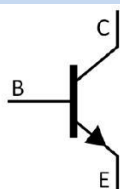
## / Features

M<sub><F</sub> #

## / Applications

#

## / Equivalent Circuit



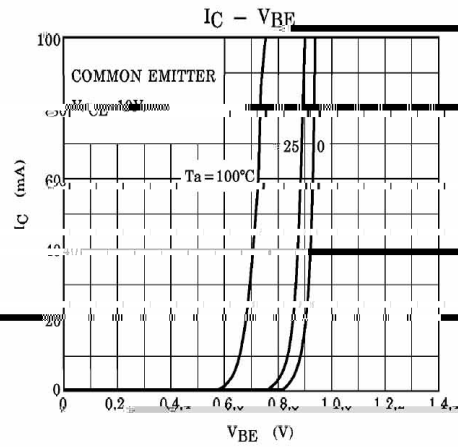
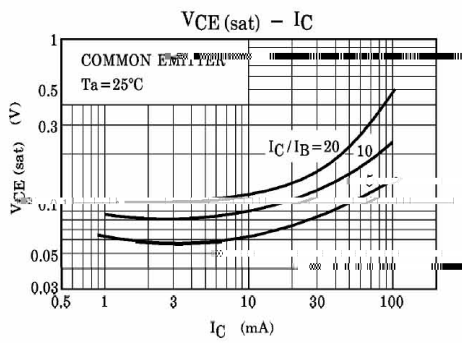
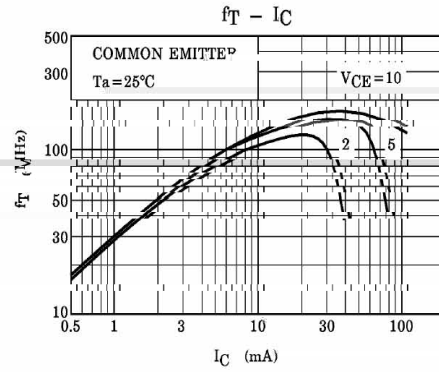
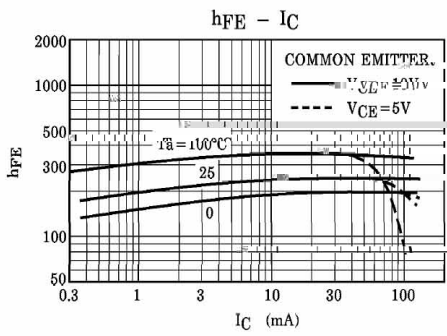
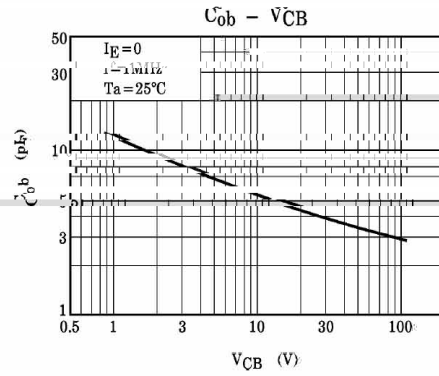
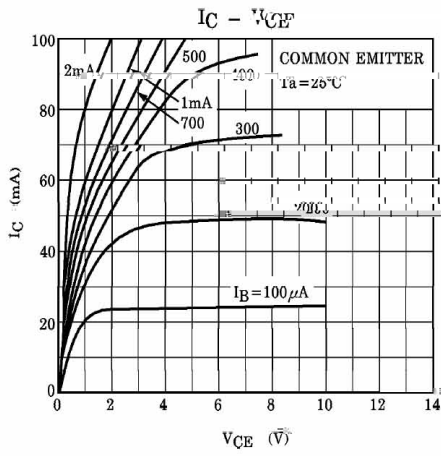
## / Pinning



## / h<sub>FE</sub> Classifications & Marking


2SC2230(A)

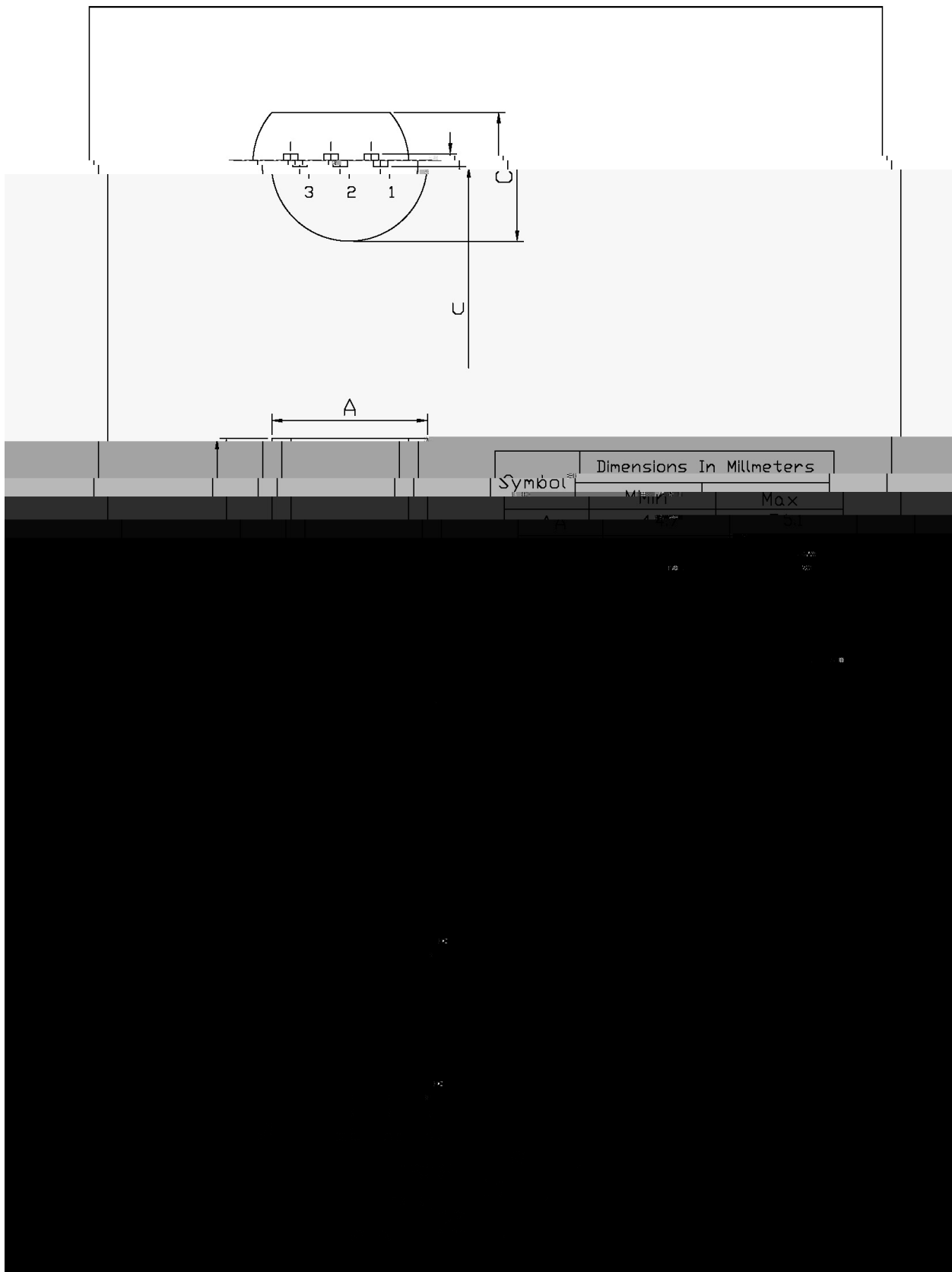

/ Electrical Characteristic Curve



/ Package Dimensions

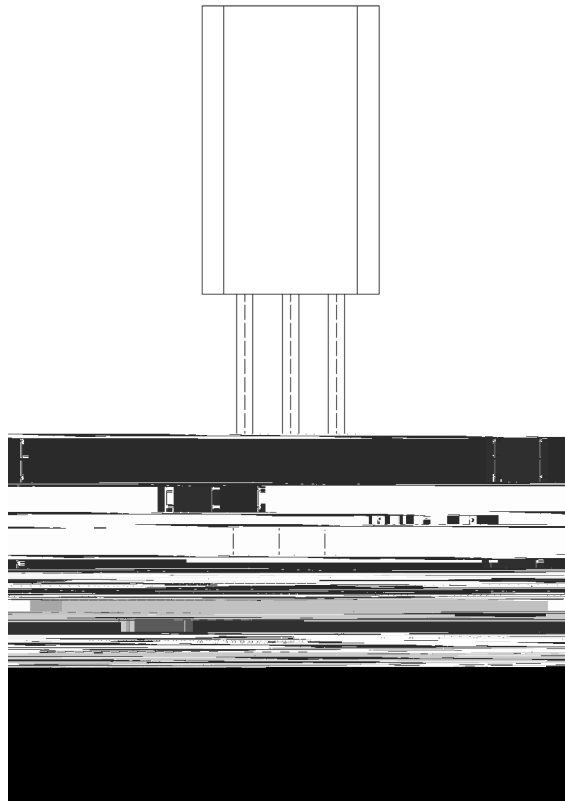
TO-92LM

Unit: mm



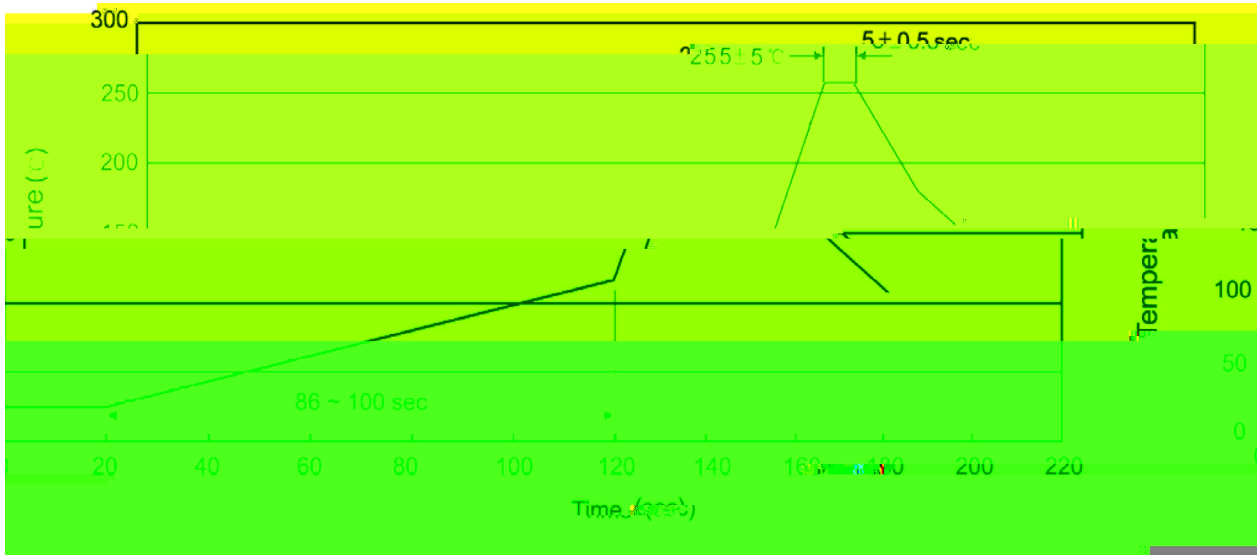
Symbol	Dimensions In Millimeters	
	Min	Max
A	4.70	5.00
U	1.40	1.60

/ Marking Instructions



9| 1  
:)) \*' 8  
P1  
!!!!

( ) / Temperature Profile for Dip Soldering(Pb-Free)



... ..

/ Resistance to Soldering Heat Test Conditions

... ..

/ Packaging SPEC.

封装形式	包装数量					包装尺寸 :		
	只袋	袋盒	只盒	盒箱	只箱	袋	盒	箱