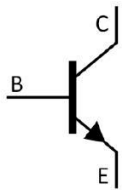


Rev.E Mar.-2016

TO-92LM NPN Silicon NPN transistor in a TO-92LM Plastic Package.

High voltage, small collector output capacitance.

High voltage switching and amplifier, color TV horiz driver, chroma output applications..



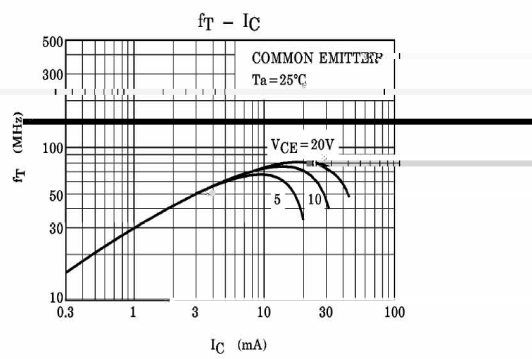
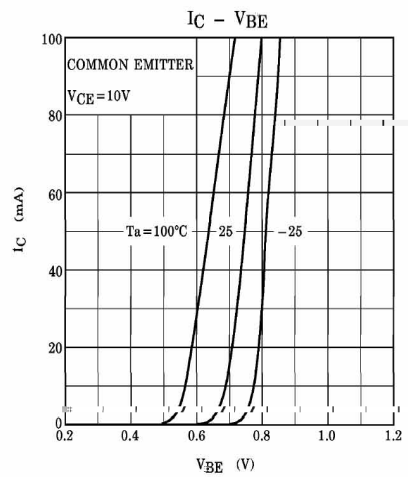
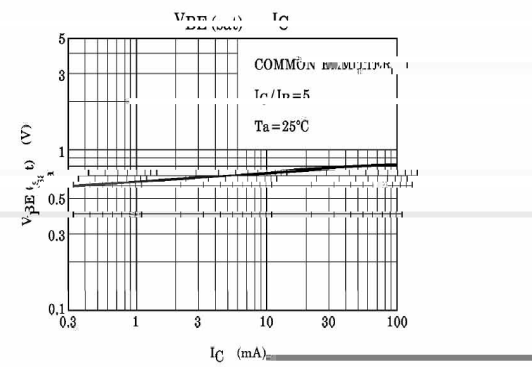
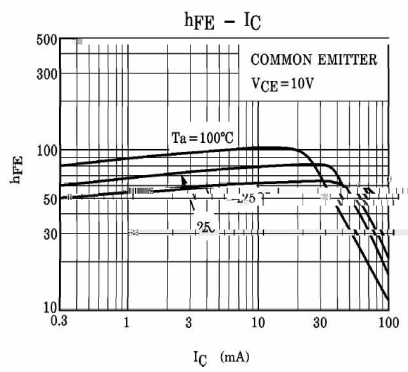
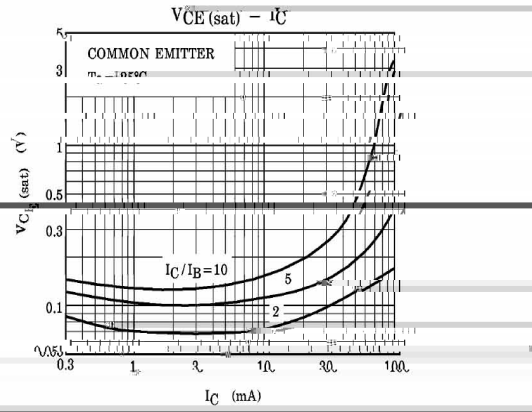
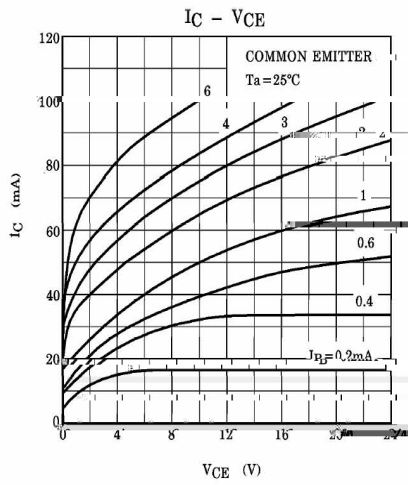
PIN1 Base PIN 2 Collector PIN 3 Emitter

See Marking Instructions.

Parameter	Symbol	Rating	Unit
Collector to Base Voltage	V_{CBO}	300	V
Collector to Emitter Voltage	V_{CEO}	300	V
Emitter to Base Voltage	V_{EBO}	7.0	V
Collector Current (DC)	I_C	100	mA
Base Current	I_B	50	mA
Collector Power Dissipation	P_C	900	mW
Junction Temperature	T_j	150	
Storage Temperature Range	T_{stg}	-55 150	

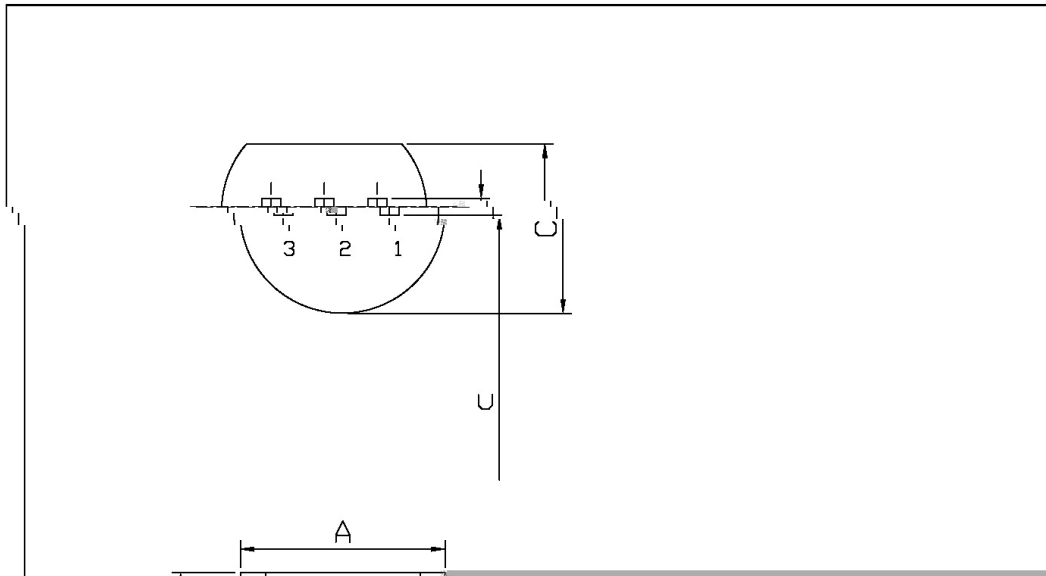
Parameter	Symbol	Test Conditions	Min	Typ	Max	Unit
Collector Cut-Off Current	I_{CBO}	$V_{CB}=240V$ $I_E=0$			1.0	μA

Emitter

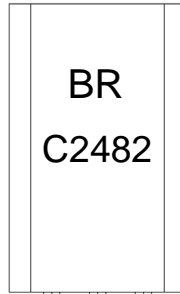


TO-92LM

Unit: mm



Symbol	Dimensions In Millimeters	
	Min	Max
A	1.47	5.1
B	1.27	1.27
C	1.27	1.27
D	1.27	1.27
E	1.27	1.27
F	1.27	1.27
G	1.27	1.27
H	1.27	1.27
I	1.27	1.27
J	1.27	1.27
K	1.27	1.27
L	1.27	1.27
M	1.27	1.27
N	1.27	1.27
O	1.27	1.27
P	1.27	1.27
Q	1.27	1.27
R	1.27	1.27
S	1.27	1.27
T	1.27	1.27
U	1.27	1.27
V	1.27	1.27
W	1.27	1.27
X	1.27	1.27
Y	1.27	1.27
Z	1.27	1.27



BR:

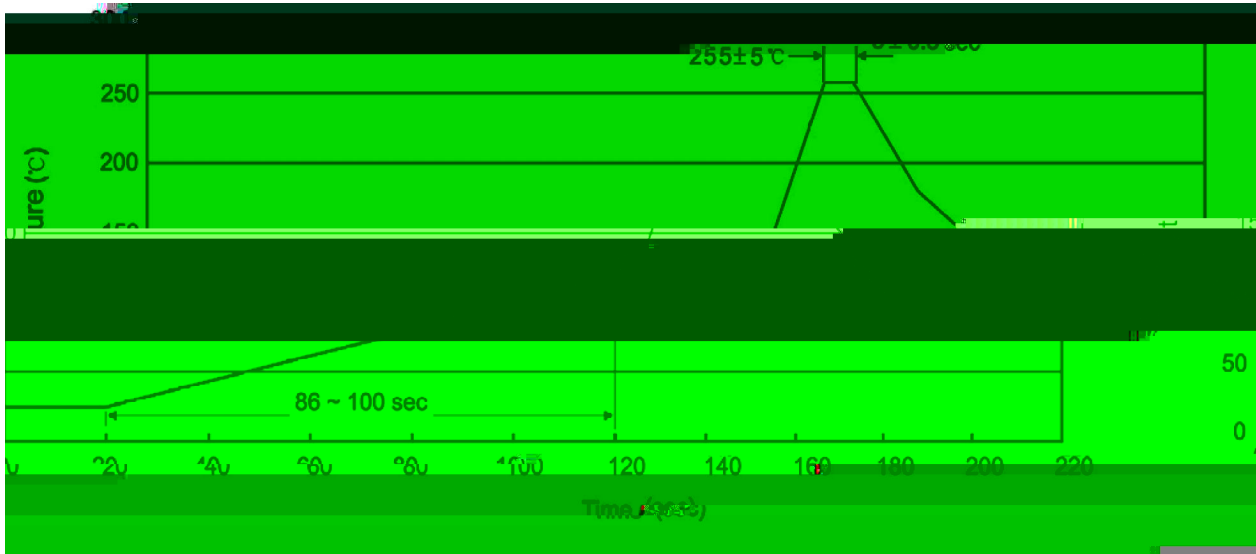
C2482

Note:

BR: Company Code.

C2482: Product Type.

****: Lot No. Code,code change with Lot No.



- | | | | | |
|---|-------|-----|-----------|--------|
| 1 | 25 | 150 | 60 | 90sec; |
| 2 | 255±5 | | 5±0.5sec; | |
| 3 | | 2 | 10 | /sec. |

Note:

- 1.Preheating:25~150 , Time:60~90sec.
- 2.Peak Temp.:255±5 , Duration:5± 0.5sec.
3. Cooling Speed: 2~10 /sec.

 270 ± 5
 $10 \pm 1 \text{ sec.}$

 Temp.: 270 ± 5

 Time: $10 \pm 1 \text{ sec}$

/ BULK

/sec.