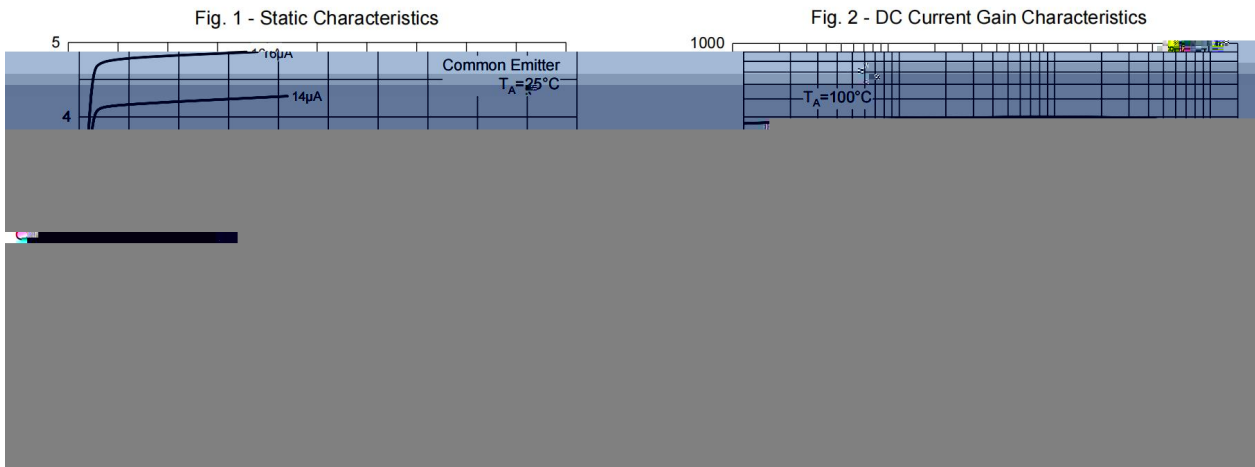


--	--	--	--	--	--

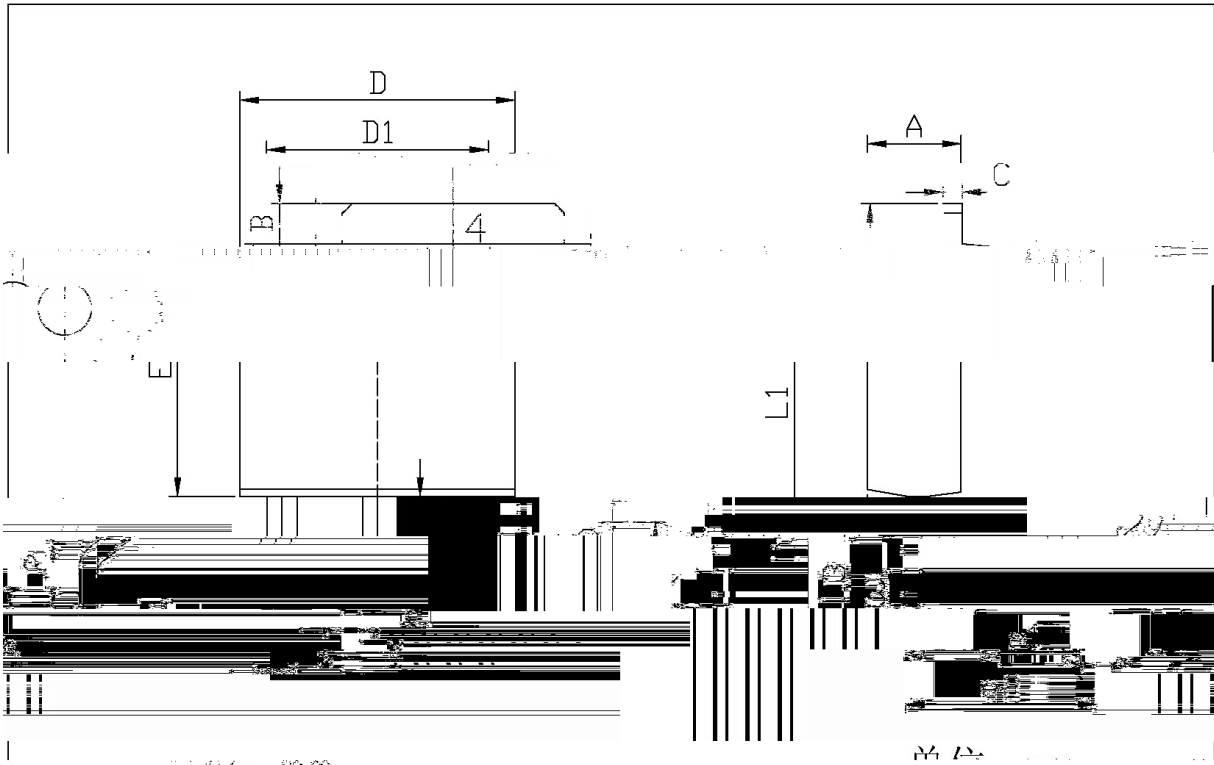
2SD1815

Rev.B Jan.-

/ Electrical Characteristic Curve



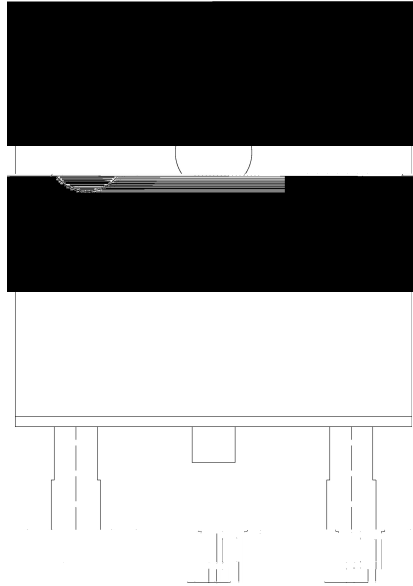
/ Package Dimensions



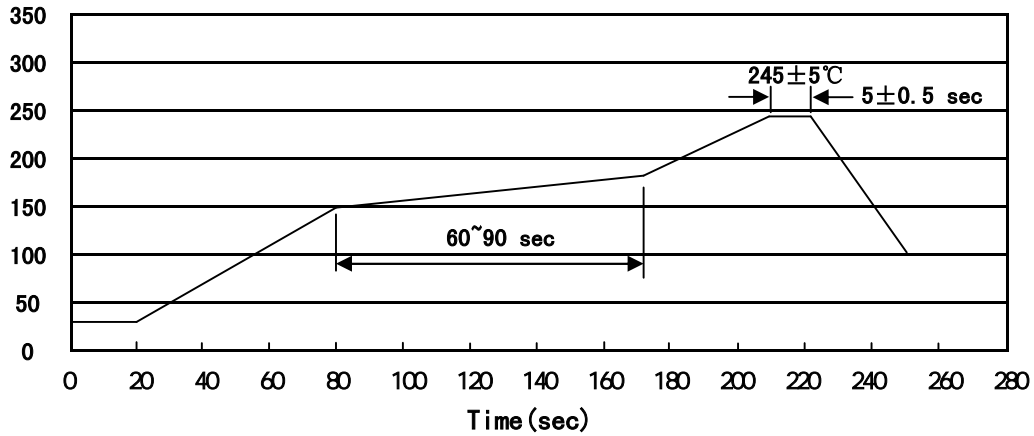
	6.45	6.75	L3	0.60	0.90
	5.10	5.50	0.25	0.55	0.10

TO-18

/ Marking



() / Temperature Profile for IR Reflow Soldering(Pb-Free)



Note:

- | | | | | | |
|---|-------|-----|----|-----------|--|
| 1 | 150 | 180 | 60 | 90sec; | 1.Preheating:150~180°C, Time:60~90sec. |
| 2 | 245±5 | | | 5±0.5sec; | 2.Peak Temp.:245±5°C, Duration:5±0.5sec. |
| 3 | | | 2 | 10°C/sec. | 3. Cooling Speed: 2~10°C/sec. |

/ Resistance to Soldering Heat Test Conditions

260±5°C 10±1 sec. Temp.:260±5°C Time:10±1 sec

/ Packaging SPEC.

/ REEL

Package Type	Units					Dimension (unit mm ³)		
						"		

/ TUBE

Package Type	Units					Dimension (unit mm ³)		