

2SD468

/ Descriptions

TO-92LM NPN

/ Features

2SB562

/ Applications

/ Equivalent Circuit



/ Pinning



/ h_{FE} Classifications & Marking

| | | |
|--|--|--|
| | | |
| | | |

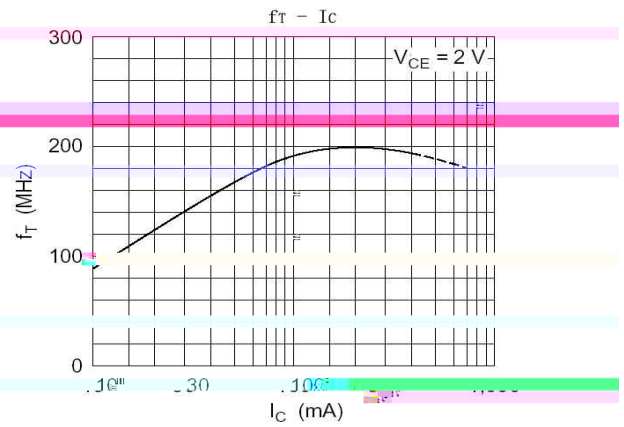
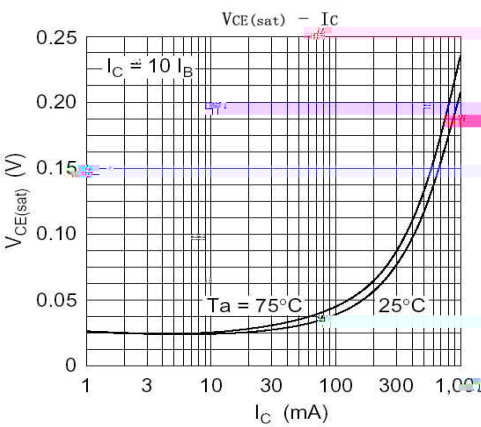
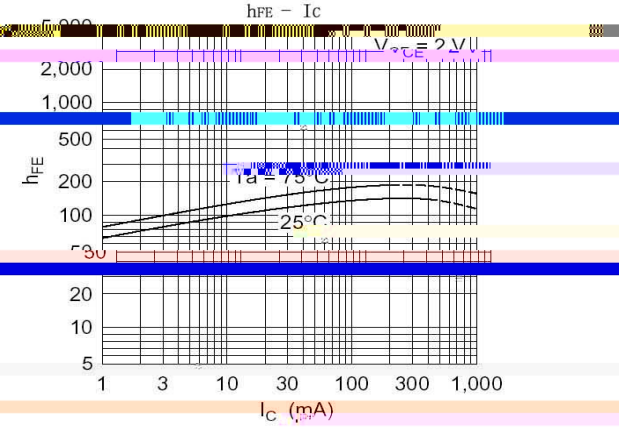
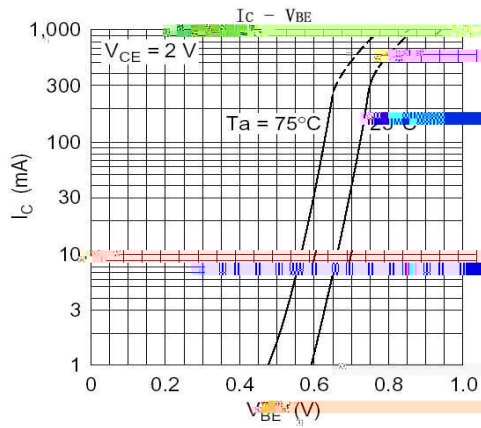
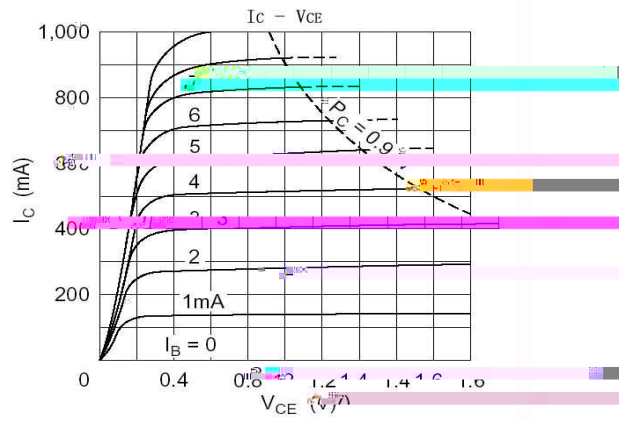
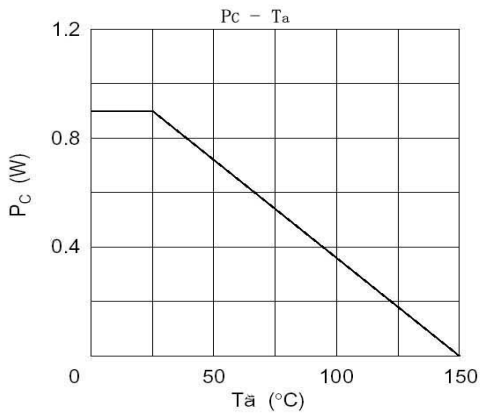
/ Absolute Maximum Ratings(Ta=25)

| | | | |
|--|--|--|--|
| | | | |
| | | | |
| | | | |
| | | | |
| | | | |
| | | | |
| | | | |
| | | | |

/ Electrical Characteristics(Ta=25)

| | | | | | | |
|--|--|---|--|--|--|---|
| | | | | | | |
| | | μ | | | | |
| | | | | | | |
| | | μ | | | | |
| | | | | | | μ |
| | | | | | | |
| | | | | | | |
| | | | | | | |
| | | | | | | |
| | | | | | | |

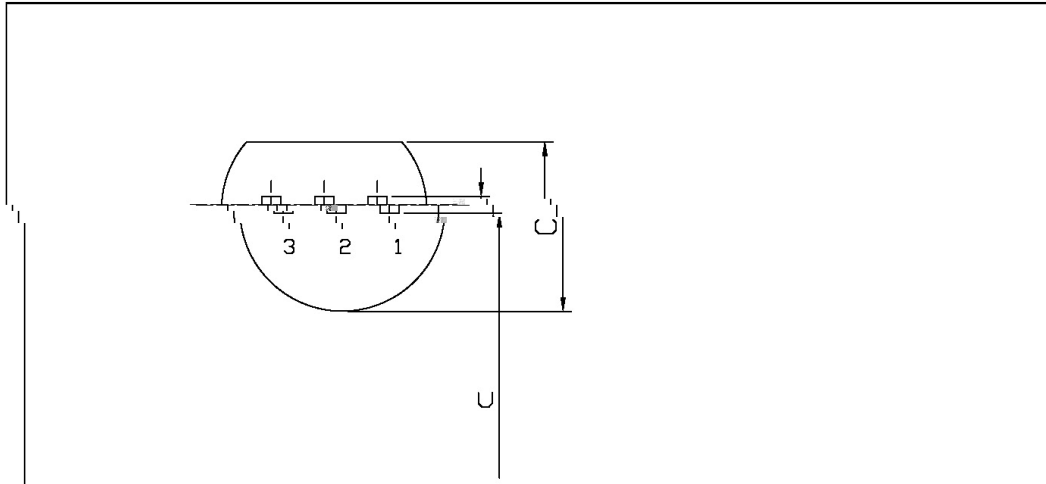
/ Electrical Characteristic Curve



/ Package Dimensions

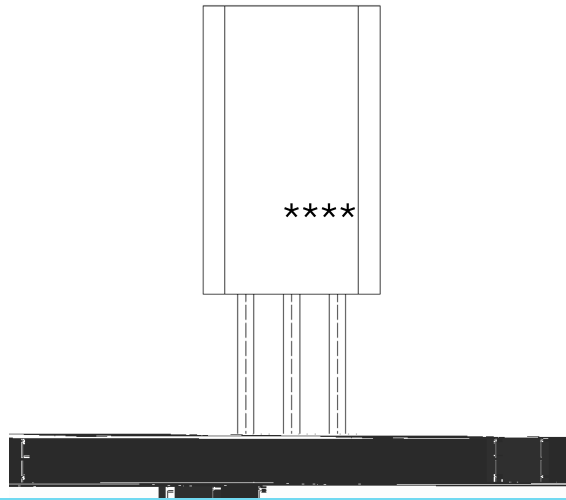
TO-92LM

Unit: mm



| Symbol | Dimensions In Millimeters | |
|--------|---------------------------|-----|
| | Min | Max |
| A | 4.47 | 5.1 |
| C | 5.2 | 5.7 |
| E | 0.5 | 0.7 |
| E1 | 0.5 | 0.7 |
| U | 1.2 | 1.5 |

/ Marking Instructions

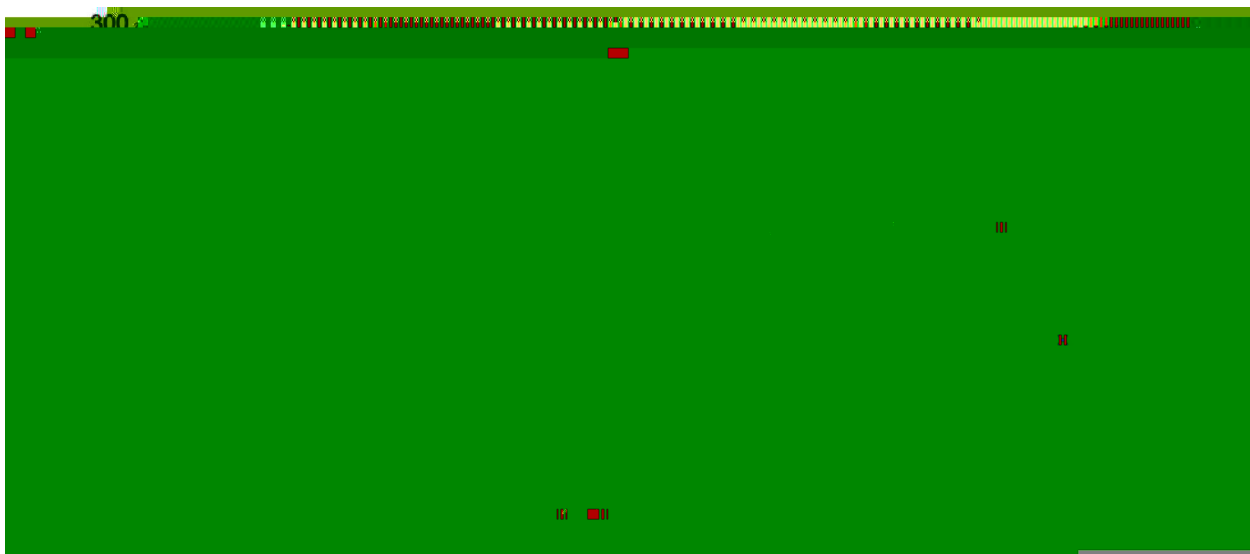


BR:

D468

B: h

() / Temperature Profile for Dip Soldering(Pb-Free)



±

±

±

±

/ Resistance to Soldering Heat Test Conditions

±

±