

TO-220 Voltage Regulator in a TO-220 Plastic Package.

1.0A,  
3-Terminal regulators ,output current up to 1.0A, internal thermal overload protection and short-circuit limiting.

Voltage Regulator.

/

# 7815A

Rev.B Jun.-2024



DATA SHEET

	Symbol	Rating	Unit
Input voltage	$V_i$	17.5~35	V
Power Dissipation	$P_D$	Internally Limited	W
Thermal Resistance Junction-ambient	$R_{JA}$	65	/W
Thermal Resistance Junction-case	$R_{JC}$	5.0	/W
Operating Temperature Range	$T_{OPR}$	-40 125	
Storage temperature range	$T_{stg}$	-65 150	

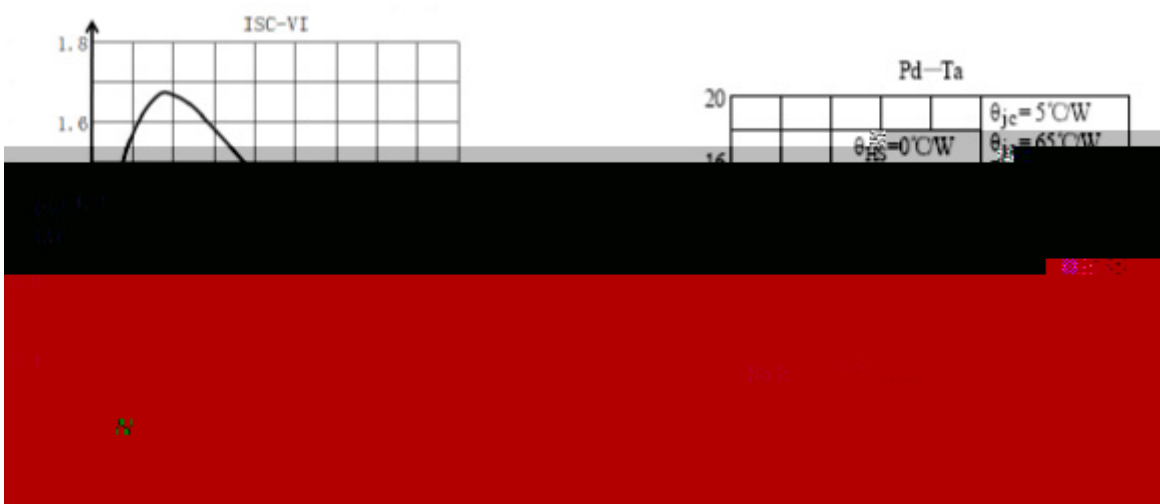
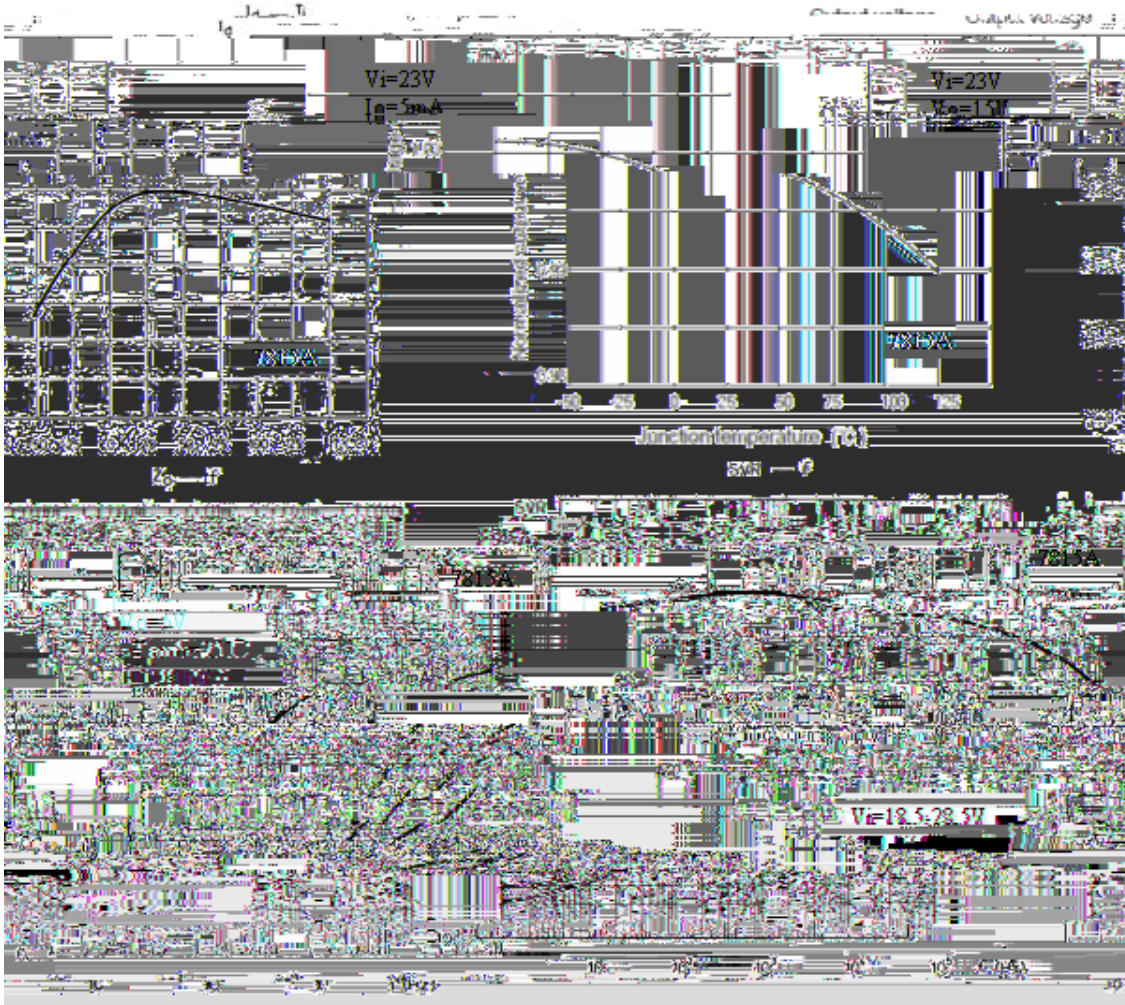
## Test Conditions

T

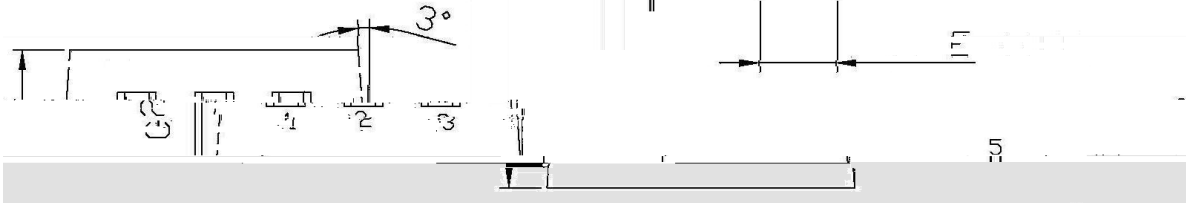
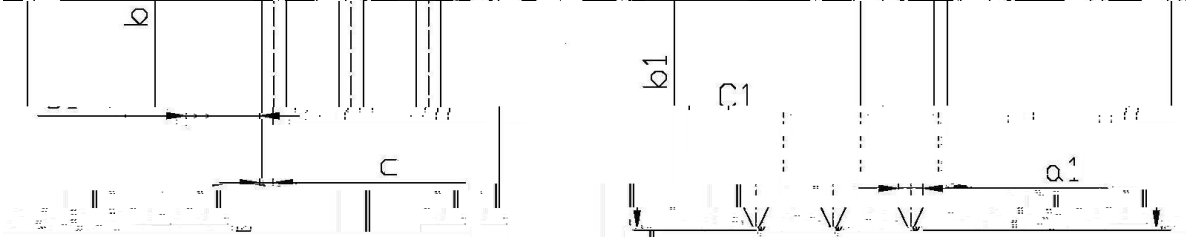
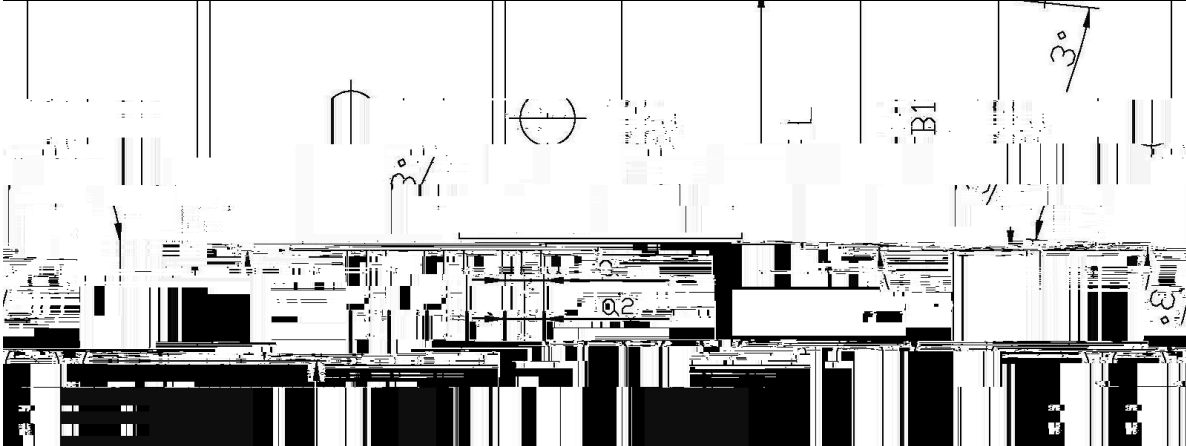
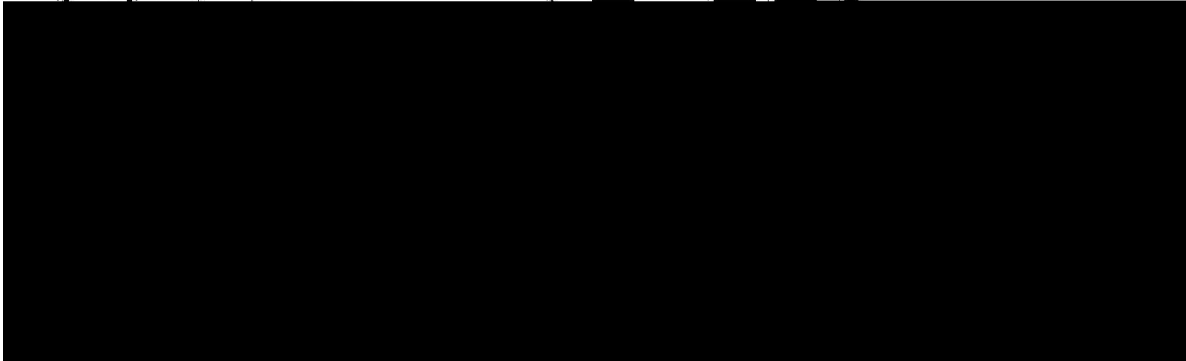
15.7

Symbol						
Output Voltage B=10Hz~100KHz	V	$T_j=25$	14.4	15	15.6	V
		$V_i=17.5V\sim30V$ $I_o=5mA\sim1.0A$	15			
Load Regulation	$V_{Load}$	$T_j=25$ $I_o=5mA\sim1.0A$			250	mV
		$T_j=25$ $I_o=250mA\sim750mA$			125	mV
Line Regulation	$V_{Line}$	$T_j=25$ $V_i=17.5V\sim30V$				
		$T_j=25$ $V_i=20V\sim26V$			125	mV
Quiescent Current	$I_q$	$j=25$			8.0	mA
Quiescent Current Change	$I_q$	$V_i=17.5V\sim30V$			1.0	mA
		$I_o=5mA\sim1.0A$			0.5	mA
Output Voltage Drift	$V_o/T$	$I_o=5mA$ $T_j=0\sim125$	-1.0			mV/
Output Noise Voltage	eN	$j=25$	10			V/ $V_o$
Supply Voltage Rejection	SVR	$V_i=18.5V\sim28.5V$	54			dB
Dropout Voltage	$V_d$	$j=25$		2.0		V
Output Resistance	$R_o$	$f=1KHz$		19		m

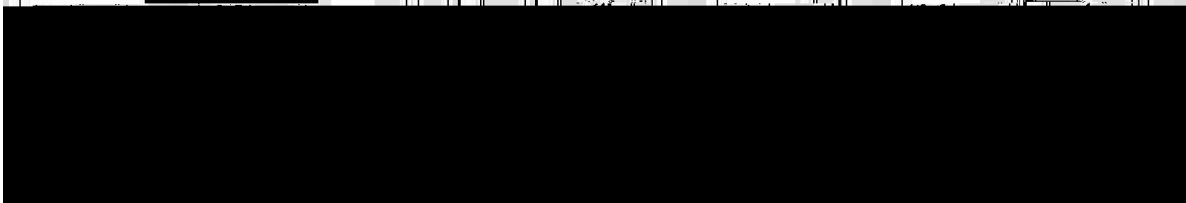
/ Electrical Characteristic Curve



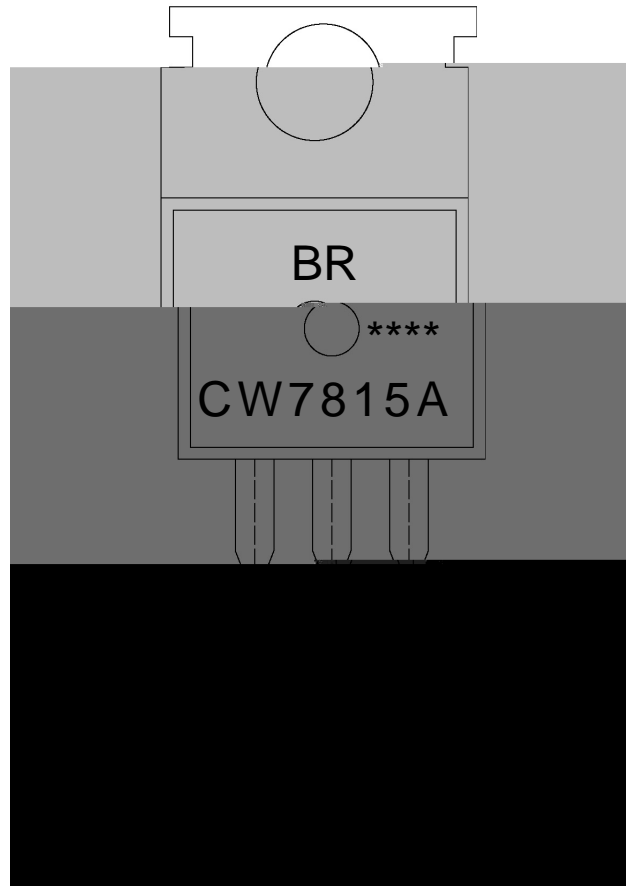
/ Package Dimensions



	Min	Max	Symbol	Min	Max
A	9.8	10.2	C	1.2	1.4
B	6.7	7.3	B	6.3	6.7
C	9.4	10.2	B	6.3	6.7
D	15.7	16.1	B	6.3	6.7
E	12.8	13.6	B	6.3	6.7



/ Marking Instructions



BR

CW7815A

\*\*\*\*

Note:

BR: Company Code

CW7815A: Product Type Code

\*\*\*\*: Lot No. Code, code change with Lot No



**/ Notices**

PCB