

7808T

Rev.G Sep.-2023

5 é / Dp

9 5 : .> // x 9 ² ... ~ož Voltage Regulator in a SOT-89 Plastic Package.

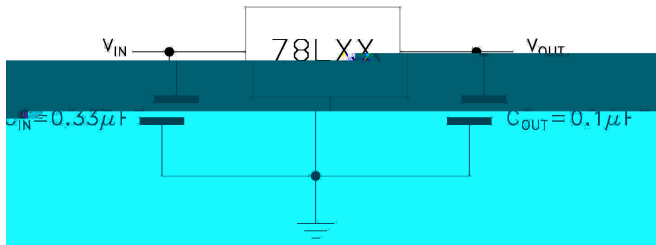
α a / Fb

€19²... ~kÿß v ä S' Ä— ½' y? è'ò k—)í D }ož
3-Terminal regulators, output current up to 100 mA, internal thermal overload protection and short-circuit limiting, HF Product.

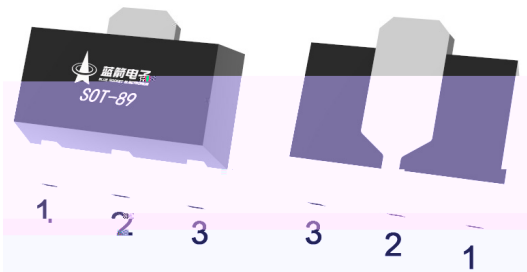
Đ ÷ / Ap

9 ² ... ~ož
Voltage Regulator.

Ã W]Ô. / €ĐÔ. / EtCtApCb



• Ū - æ / B



PIN 1 y OUT

PIN 2 y GND

PIN 3 y IN

, M V / B

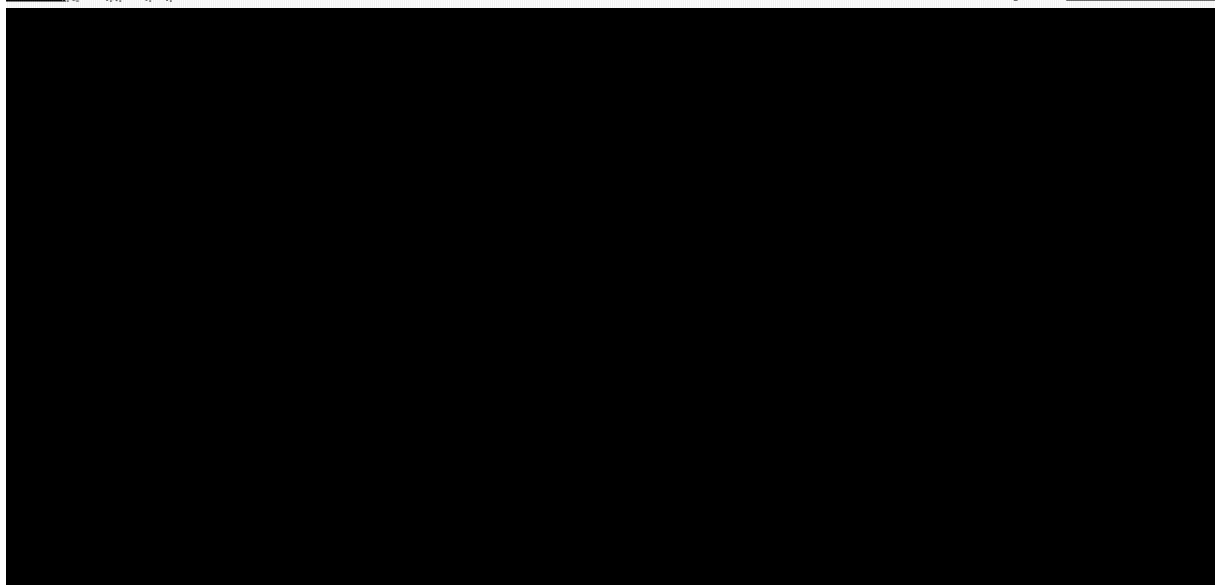
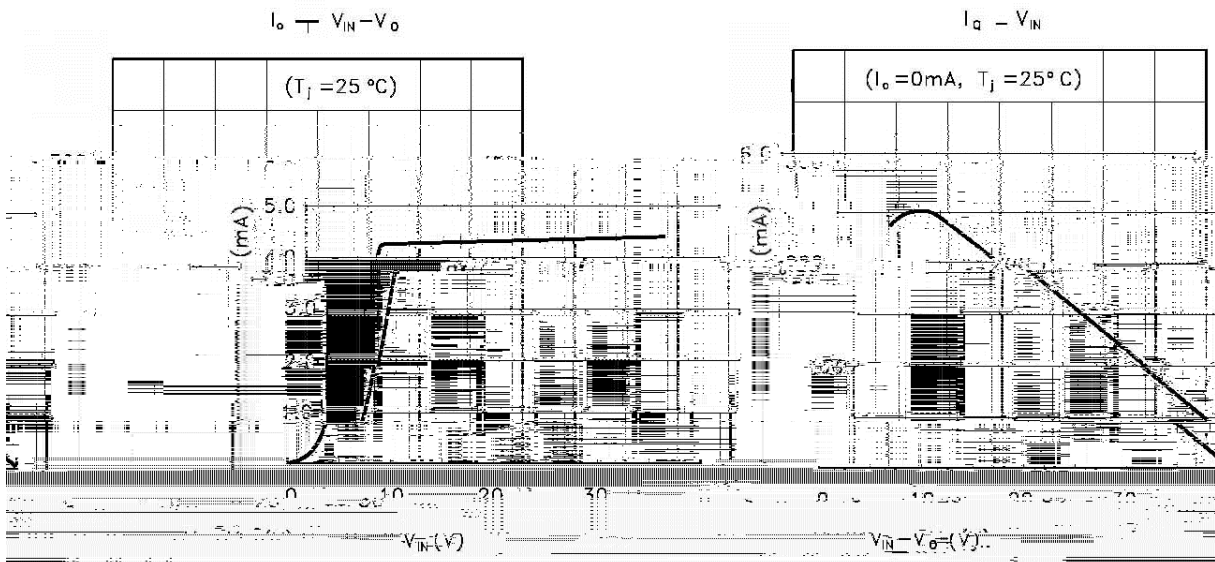
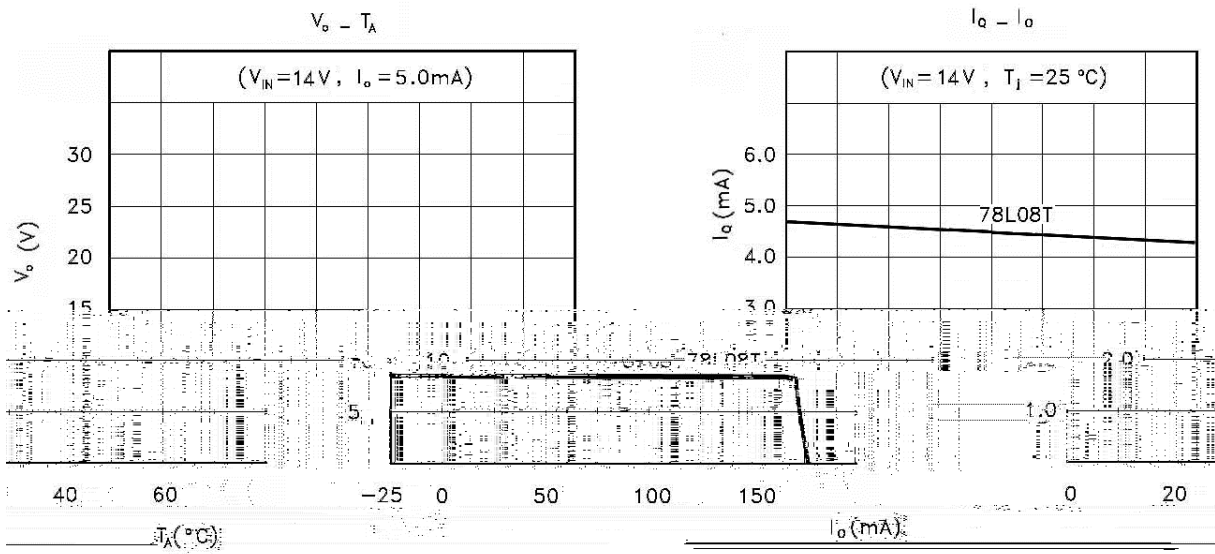
Marking	HL08 *
---------	--------

@ f Parameter	... Z Symbol	f › Rating	% y Unit
Input voltage	V _I	30	V
Output current	I _O	100	mA
Operating virtual Junction temperature	T _J	0 125	
Power Dissipation	P _D	500	mW
Storage temperature range	T _{stg}	-65 150	

@ f Parameter	... Z Symbol	y j Ú ^ Test Conditions	Â 4 › Min	Â ° › Typ	Â Ý › Max	% y Unit
Output voltage	V _O	I _O =40mA T _J =25	7.7	8.0	8.3	V
		I _O =1mA to 40mA V _I =10.5V to 23V	7.6	8.0	8.4	V
		I _O =1mA to 70mA V _I =14V	7.6	8.0	8.4	V
Input regulation	. V _O	V _I =10.5V to 23V T _J =25		42	175	mV
		V _I =11V to 23V T _J =25		36	125	mV
Ripple rejection	RR	V _I =13V to 23V f=120Hz T _J =25	37	46		dB
Output regulation	. V _O	I _O =1mA to 100mA T _J =25		18	80	mV
		I _O =1mA to 40mA T _J =25		10	40	mV

18.42

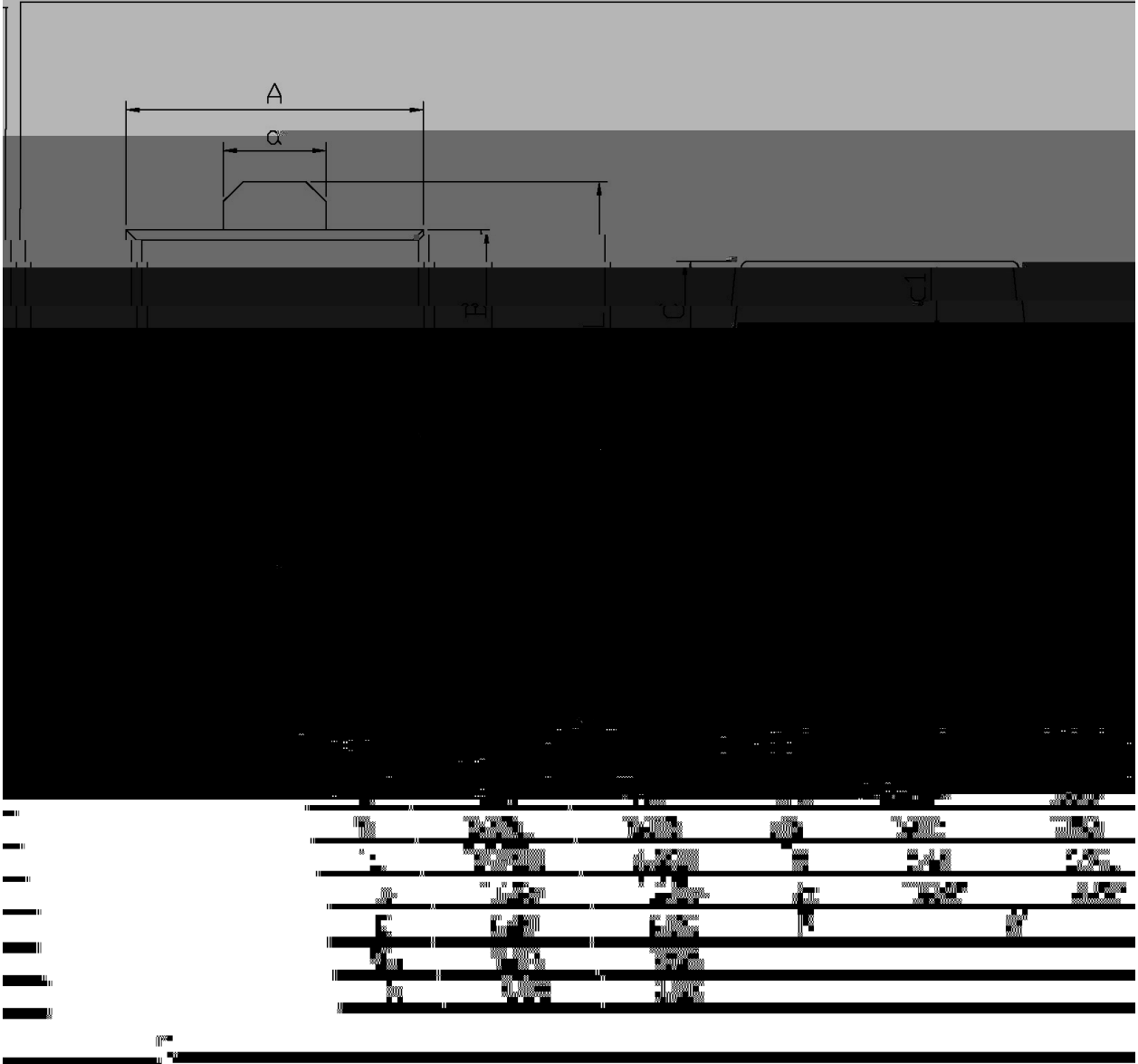
Ω ? d • Ž ϕ / EICIC



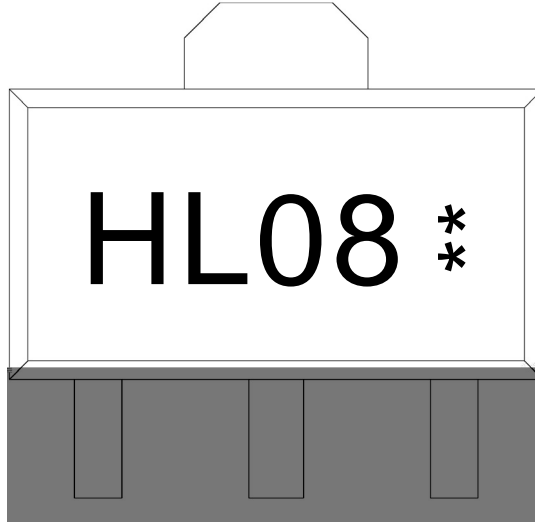
Ø □ =) φ / □ in

SUT-89

单位: mm



, My f / 5



^a ç y

H y , [W A

L08 y ° Z W A

y ÿ D Z W A k š ÿ D Z J

Note:

H: Company Code

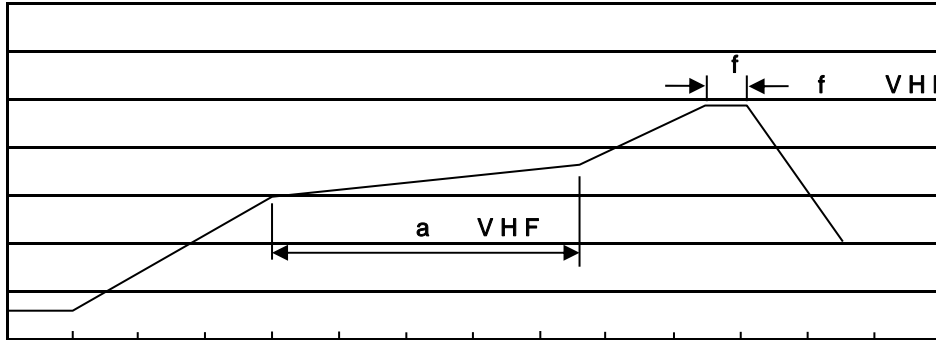
L08: Product Type

** : Lot No. Code, code change with Lot No



šWD t...•Žϕ (x/) / :KSVKXGZ[XK 6XULORK LUX /8 8KLRU] 9URJKXOTM 6

7HPSHUDWXUH



7LPH VHF

a ϕ y

- 1o• Ä ½ “ † 150 ½180 - k ž • 60 ½90sec;
- 2o• Q › “ † 245 r5 - k ž • 4 Ò 5 r0.5sec;
- 3o•D N ò i Ò 0 , † 2 ½10 - /sec.

Note:

- 1.Preheating:150~180 - , Time:60~90sec.
- 2.Peak Temp.:245 r5 - , Duration:5 r0.5sec.
- 3. Cooling Speed: 2~10 - /sec.

ÂD /Că p ~ »] / 89HCH

“ † y 260 r5 - ž • y 10 r1 sec. Temp.:260±5 Time:10±1 sec

G P á / 8C.

2 & x / REEL

Package Type 7>û ~ E	Units ;>û !H					Dimension ;>û p . (unit /Æmm³)		
	Units/Reel /--	Reels/Inner Box -- /-	Units/Inner Box /-	Inner Boxes/Outer Box - /!ç	Units/Outer Box /!ç	Reel	Inner Box	Outer Boxç
SOT-89	1,000	7	7,000	6	42,000	7 s x12	180x120x180	390x385x205

„Đ y f / 8