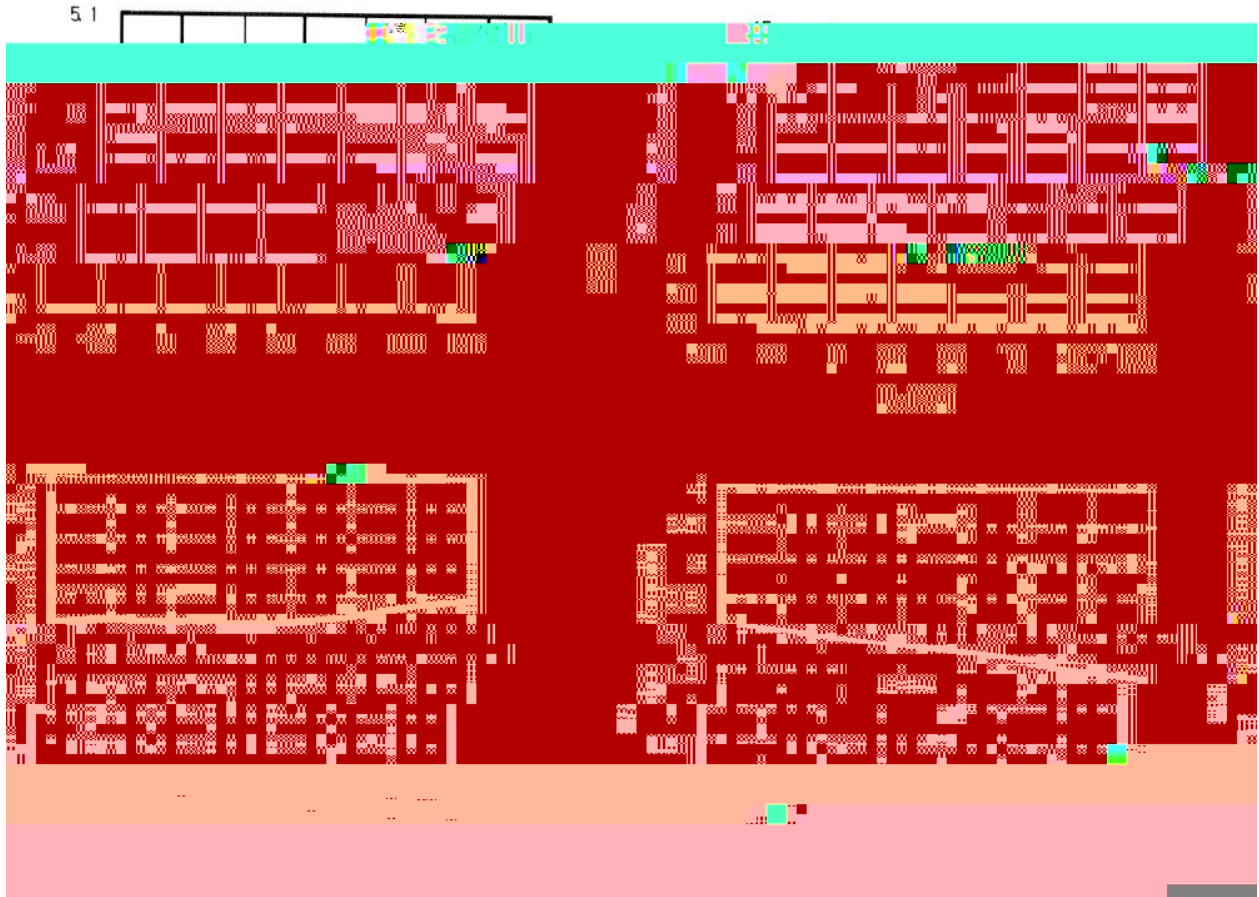


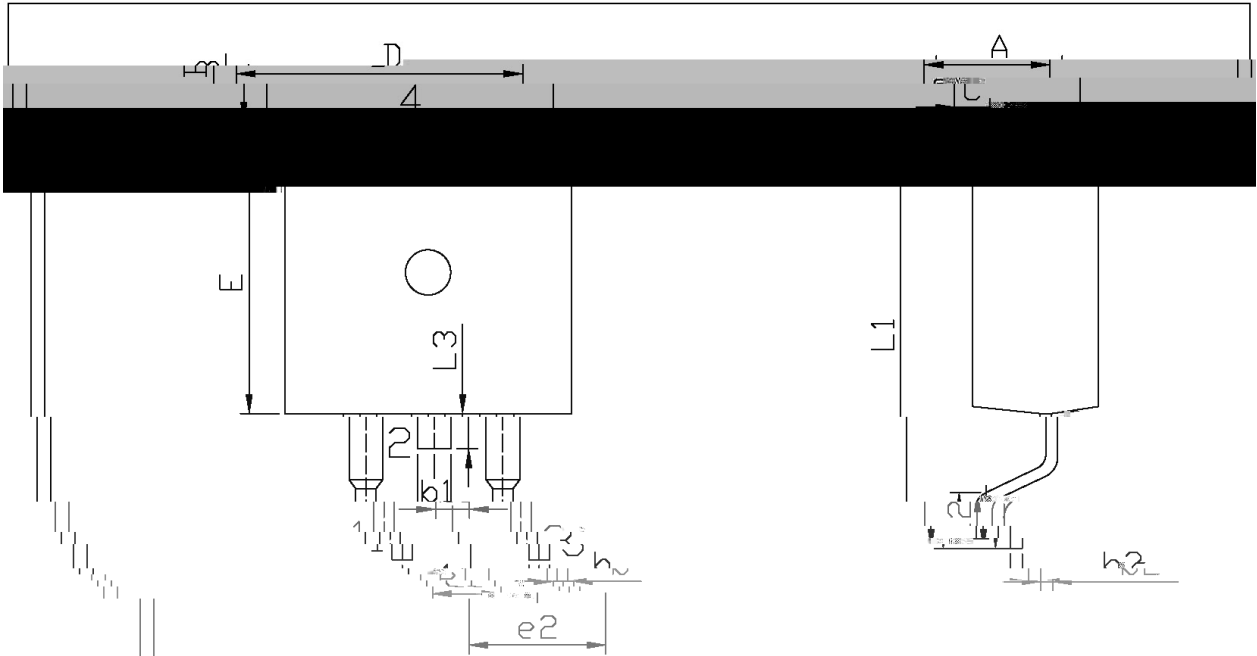
Parameter	Symbol	Rating	Unit
Input voltage	V_I	-35	V
Output current	I_O	1.0	A
Operating virtual Junction temperature	T_J	0 125	
Power Dissipation	P_D	15	W
Storage temperature range	T_{stg}	-65 150	

Parameter	Symbol	Test Conditions	Min	Typ	Max	Unit
Output voltage	V_O	$T_j=25$	-4.80	-5.0	-5.2	V
		$I_O=5mA$ to 1A $V_I=-20V$ to -7V	-4.75	-5.0	-5.25	V
Load Regulation	V_O	$T_j=25$ $V_I=-25V$ to -7V		3.0	100	mV
		$T_j=25$ $V_I=-12V$ to -8V		1.0	50	mV
Line regulation	V_O	$T_j=25$ $I_O=5mA$ to 5A			100	mV
		$T_j=25$ $I_O=250mA$ to 750mA			50	mV
Ripple rejection	RR	$V_I=-18V$ to -8V $f=120Hz$ $T_j=25$	62			dB
Output noise voltage	V_N	$f=10Hz-100KHz$ $T_j=25$			40	μV
Dropout voltage	V_D	$T_j=25$ $I_O=1A$				

/ Electrical Characteristic Curve



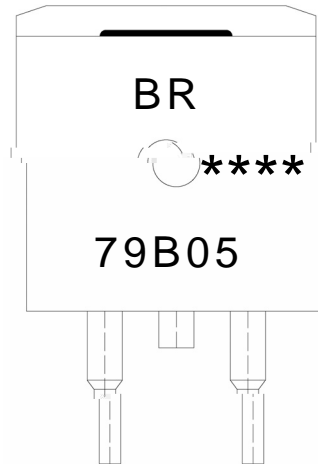
/ Package Dimensions



单位: mm

Dimensions in Millimeters	Symbol	Dimensions in Millimeters	Symbol	Dimensions in Millimeters	Symbol
Max		Min		Max	
9.40	A	4.30	A	4.70	E
2.74	B	1.30	B	1.40	e1
15.00		1.15	b1	1.35	L1

/ Marking Instructions



BR

79B05

Note:

BR: Company Code.

79B05: Product Type.

****: Lot No. Code, code change with Lot No.

