

**/ Descriptions**

JF K\$) \* GE G Silicon PNP transistor in a SOT-23 Plastic Package.

**/ Features**

' , ' D >  
Complementary pair with 8050MG, HF Product.

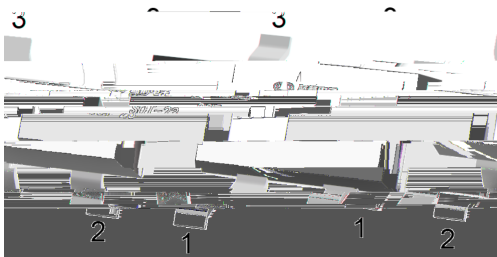
**/ Applications**

Power amplifier applications.

**/ Equivalent Circuit**



**/ Pinning**



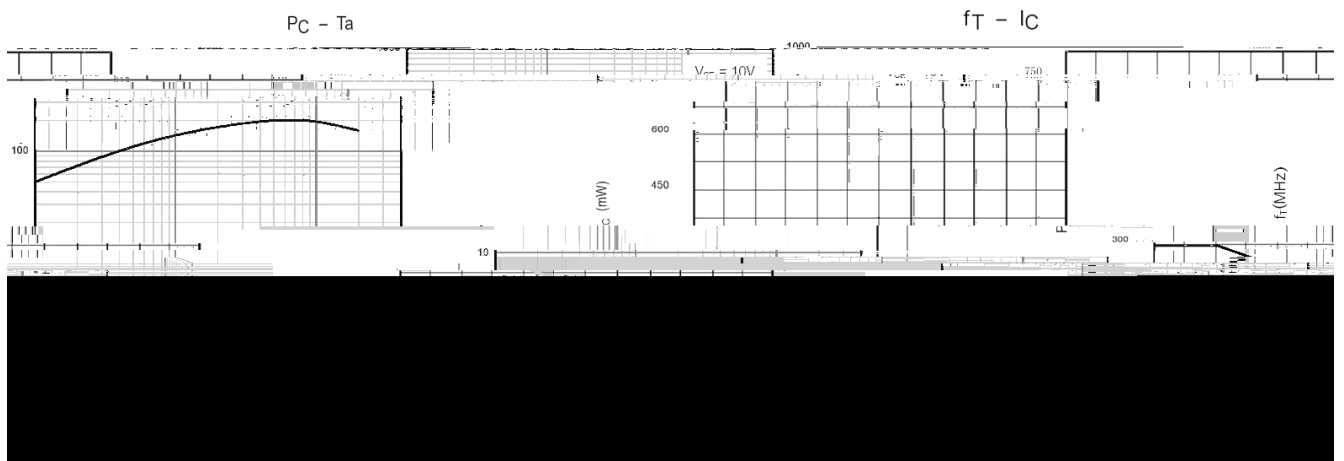
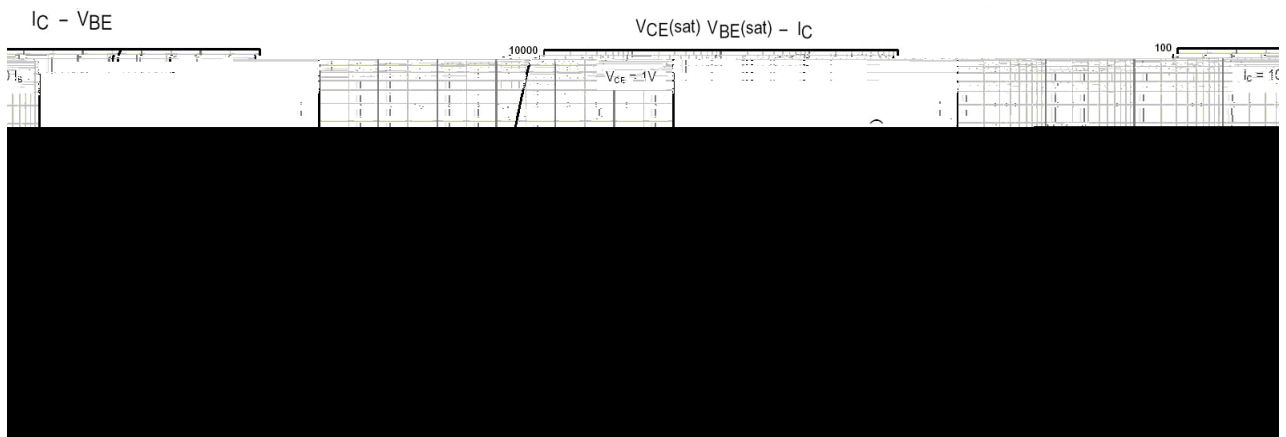
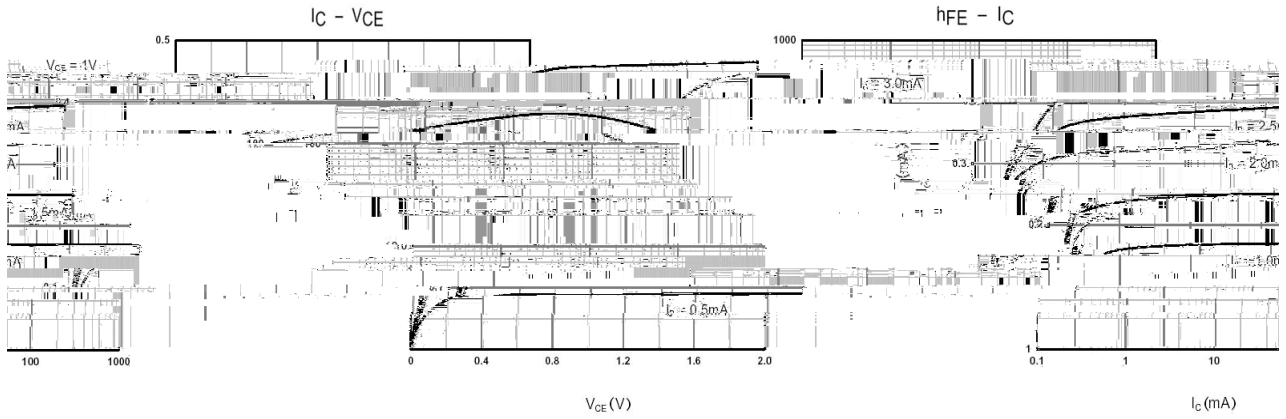
PIN1 Base PIN 2 Emitter PIN 3 Collector

**/ hFE Classifications & Marking**

hFE Classifications Symbol	B	C	D
hFE Range	85 160	120 200	160 300
Marking	GY2B	GY2C	GY2D

Parameter	Symbol	Rating	Unit
Collector to Base Voltage	$V_{CBO}$		

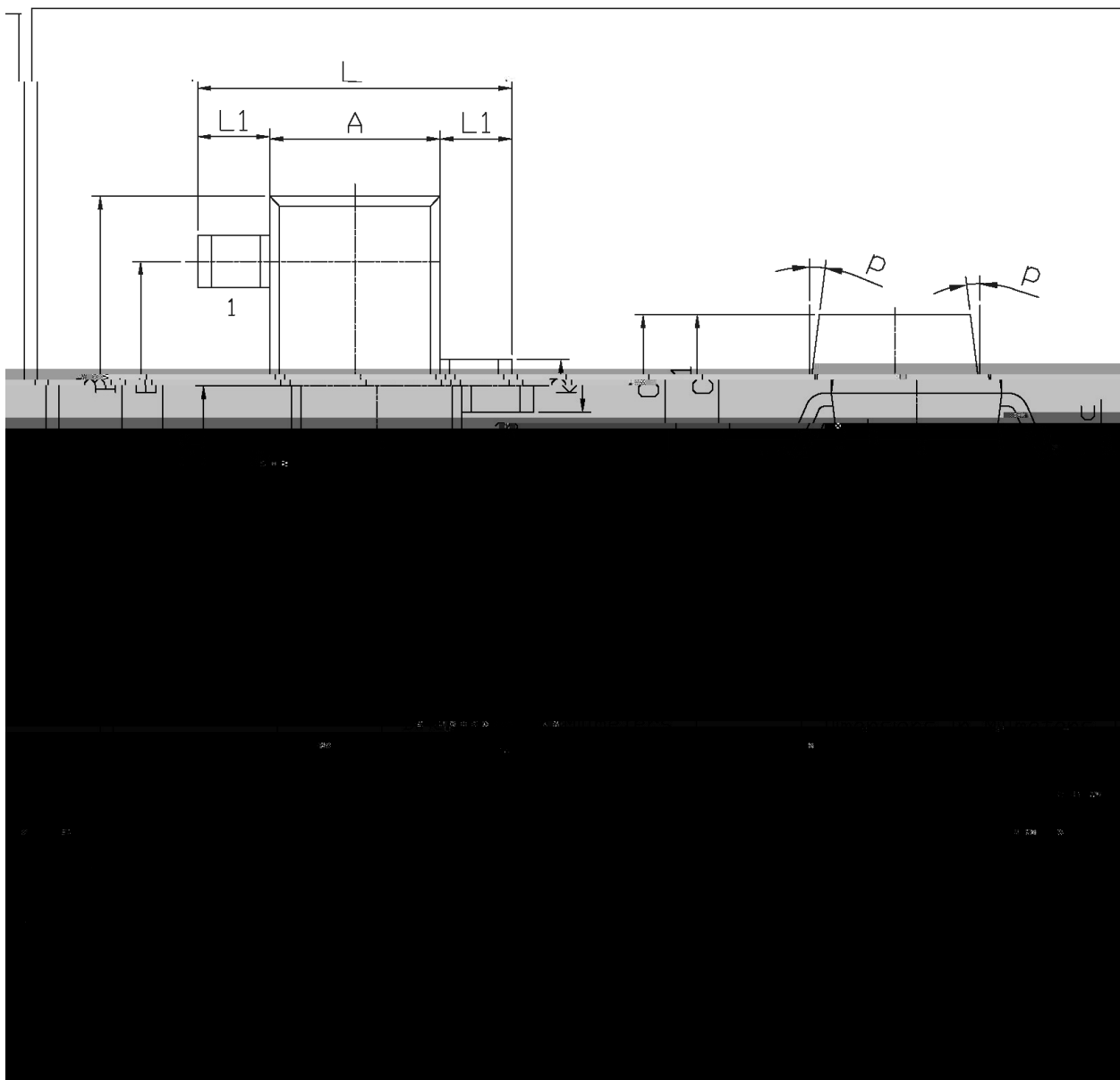
/ Electrical Characteristic Curve



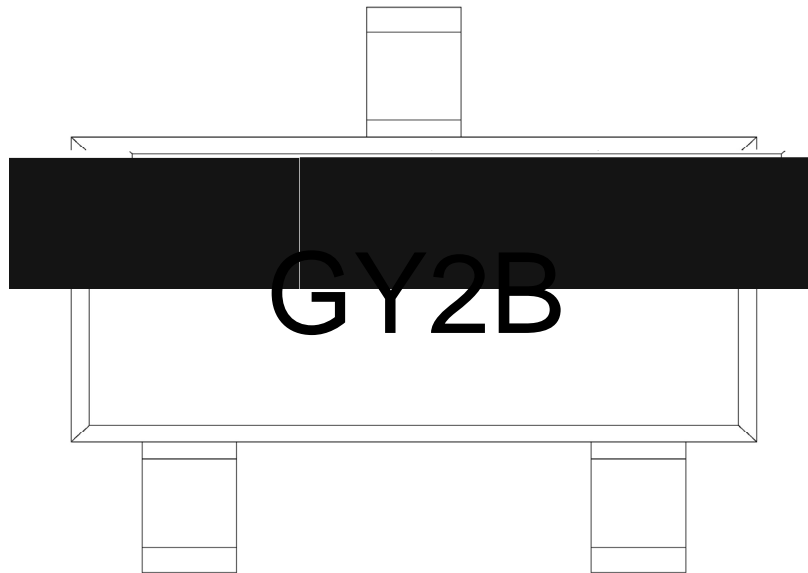
/ Package Dimensions

SMT-23

单位: mm



/ Marking Instructions



>

P)

9

hFE

Note:

>

Halogen Free Product Code

P)

Product Type Code

9

hFE Classifications Symbol Code

