

Rev.F Mar.-2016

KF (\$) - E GE Silicon NPN transistor in a TO-126 Plastic Package.

9;)*/
Complementary pair with BD238.

Medium power linear and switching applications.

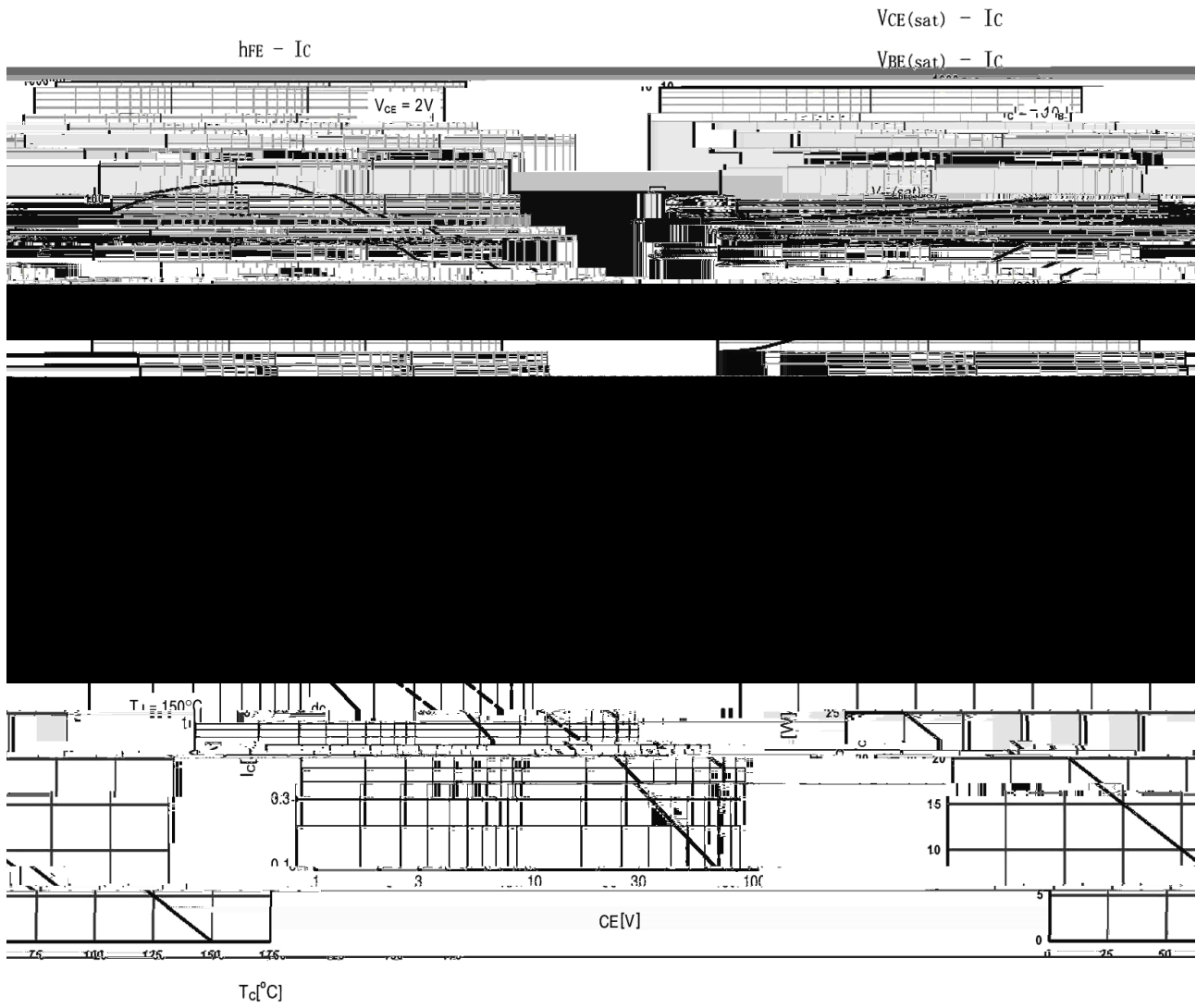


PIN1 Emitter PIN 2 Collector PIN 3 Base

See Marking Instructions.

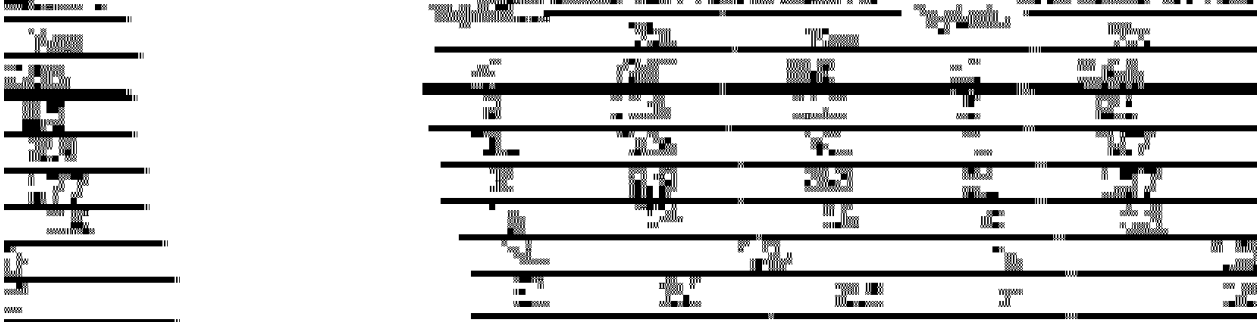
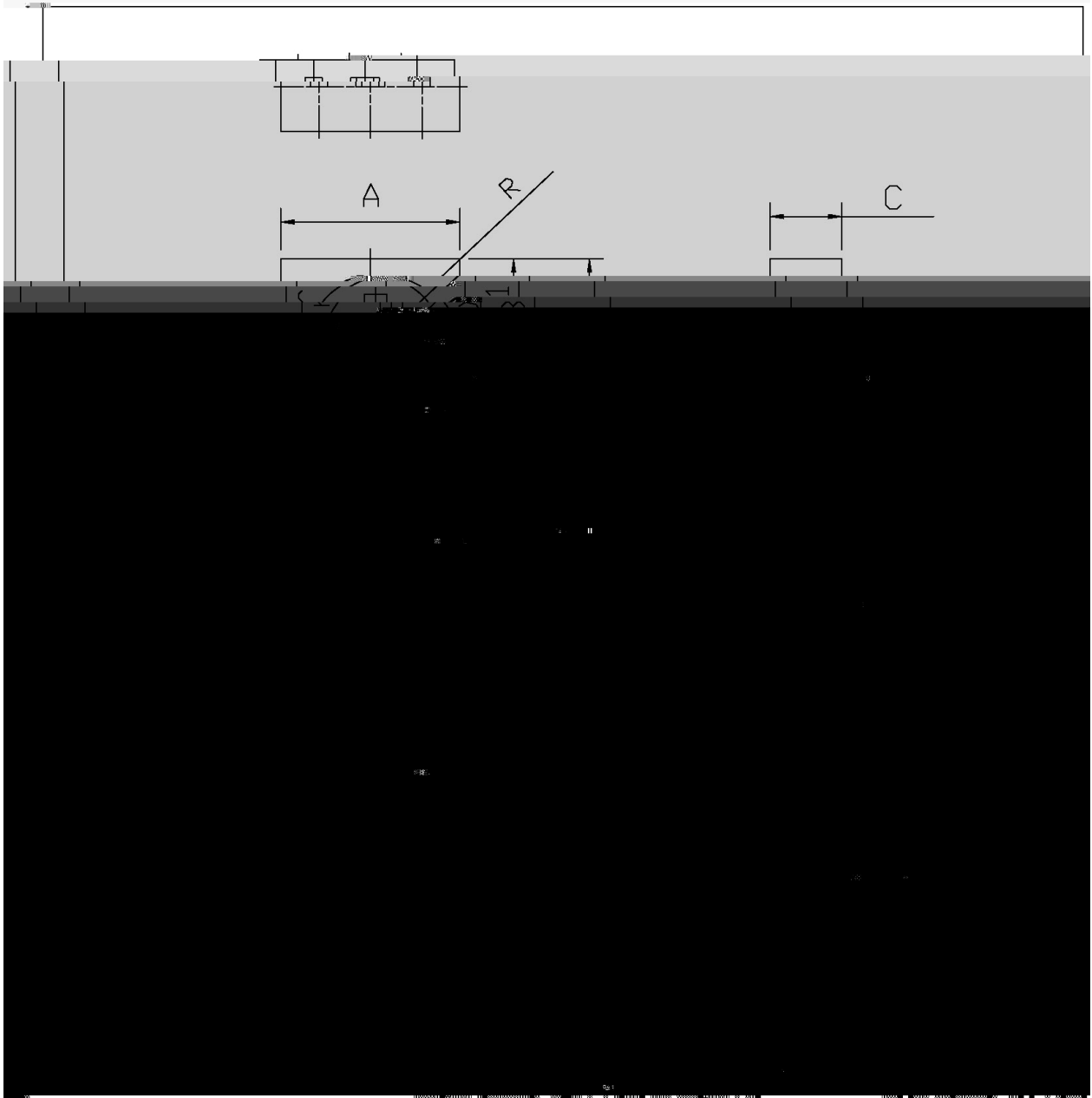
Parameter	Symbol	Rating	Unit
Collector to Base Voltage	V_{CBO}	100	V
Collector to Emitter Voltage	V_{CEO}	80	V
Emitter to Base Voltage	V_{EBO}	5.0	V
Collector Current - Continuous	I_C	2.0	A
Peak Collector Current	I_{CM}	6.0	A
Collector Power Dissipation	$P_C(T_C=25^\circ\text{C})$	25	W
Junction Temperature	T_j	150	
Storage Temperature Range	T_{stg}	-55 150	

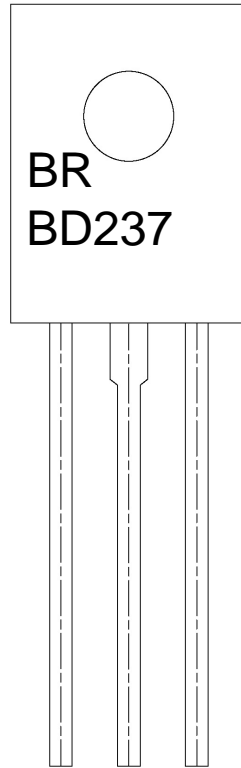
Parameter	Symbol	Test Conditions	Min	Á	°	›
-----------	--------	-----------------	-----	---	---	---



T0-126

单位: mm





9|

9;)*

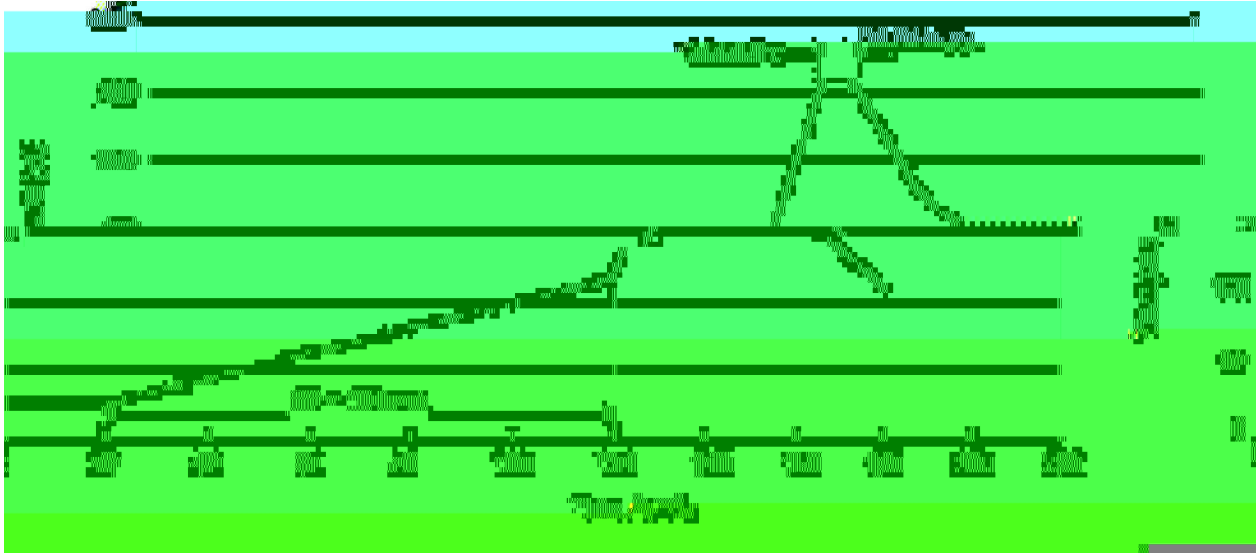
!!!!

Note:

BR: Company Code

BD237: Product Type.

****: Lot No. Code, code change with Lot No.



Note: