

**/ Descriptions**

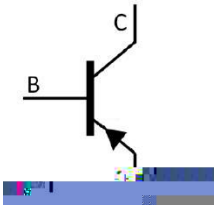
KF \$) - \* GE G

**/ Features**

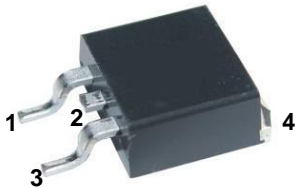
+, \$, ' N 9I )J; . (/9

**/ Applications**

**/ Equivalent Circuit**



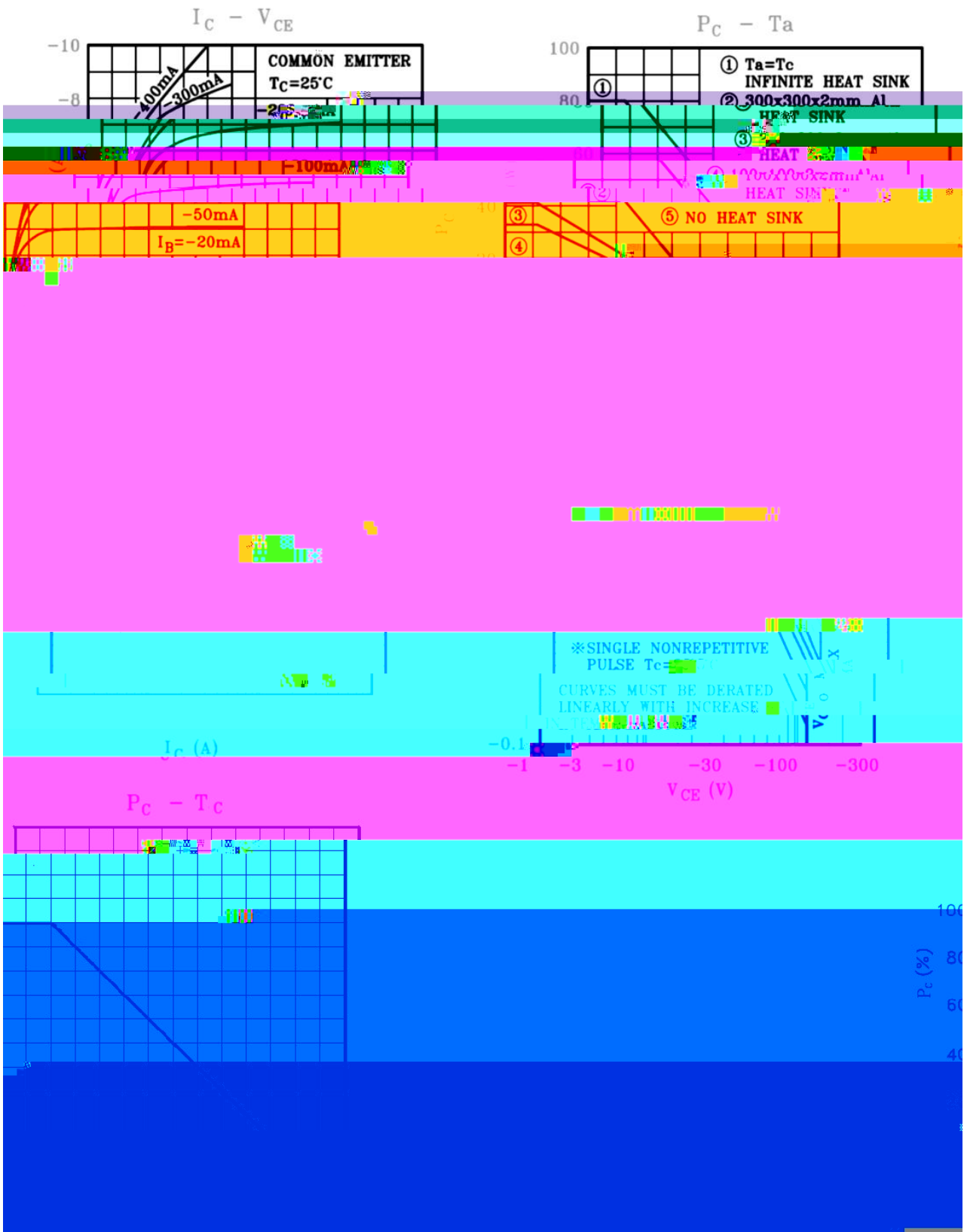
**/ Pinning**



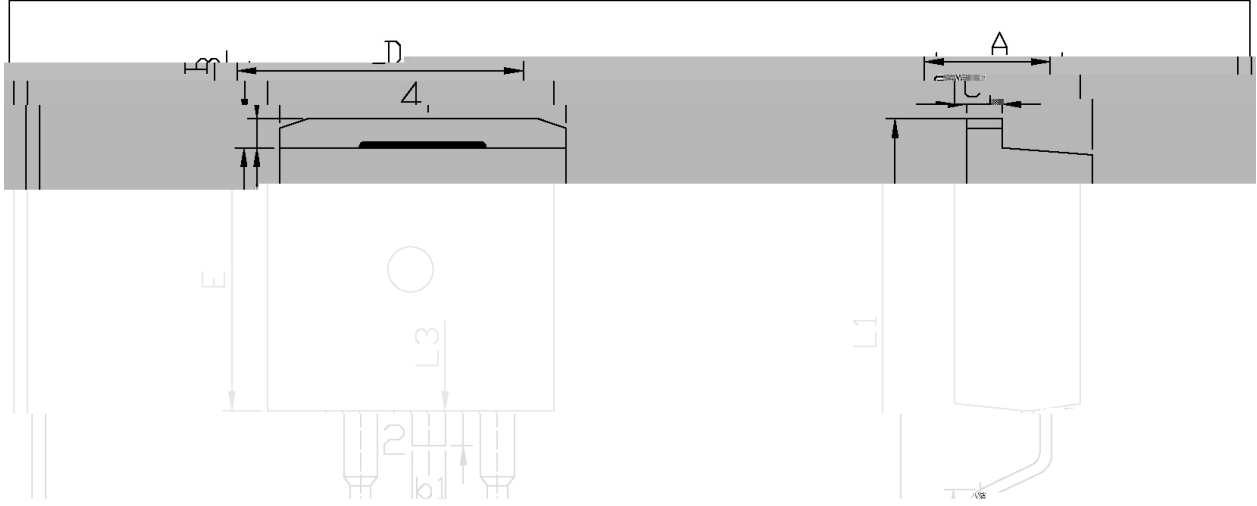
**/ h<sub>FE</sub> Classifications & Marking**




/ Electrical Characteristic Curve



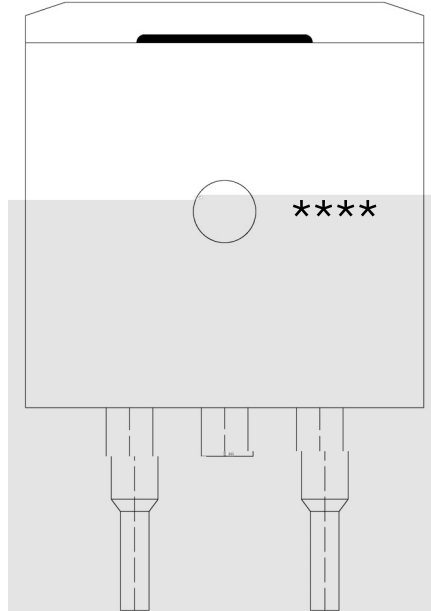
/ Package Dimensions



Max	Min	Max	Min
4.70	4.30	4.70	4.30
2.74	1.00	1.40	2.34
5.00	1.15	1.35	1.15



/ Marking Instructions



9|

9-//

F 1

—=<

!!!!

**BR2SB688B**