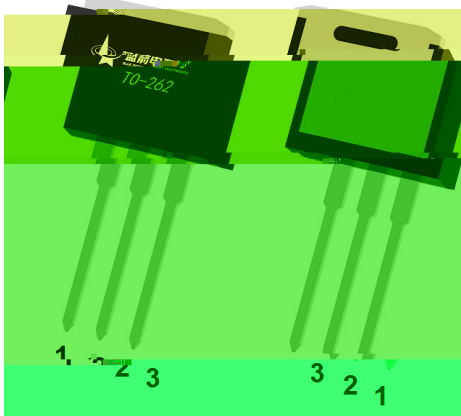
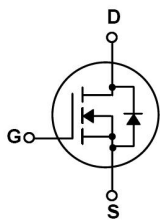


Rev.C Feb.-2026

TO-262 N MOS
N-CHANNEL MOSFET in a TO-262 Plastic Package.

Low gate charge, low crss, fast switching, HF product.

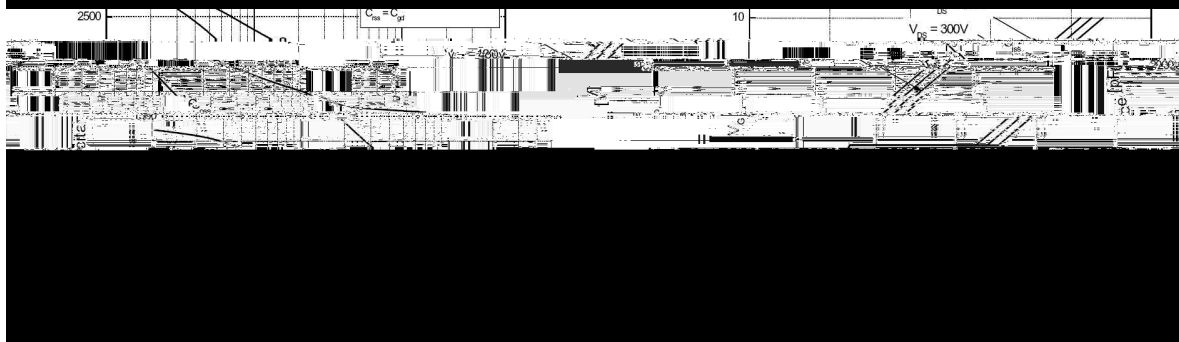
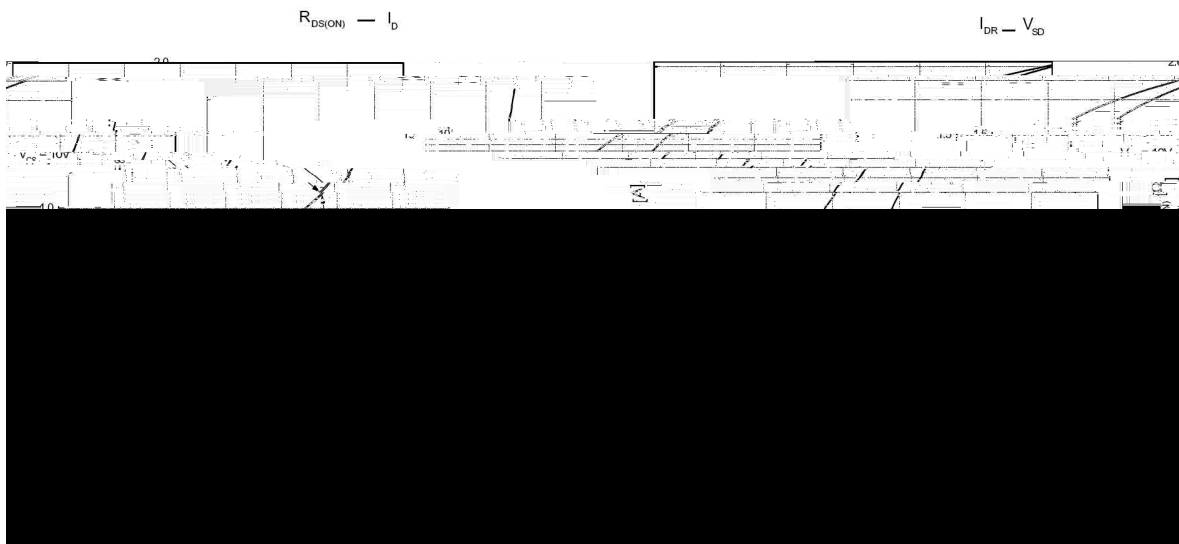
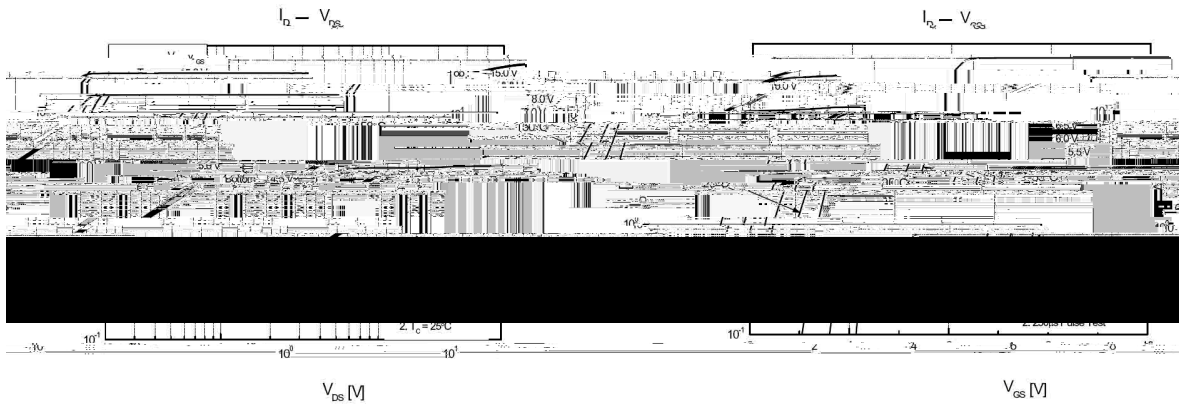
These devices are well suited for high efficiency switching DC/DC converters and switch mode power supplies.

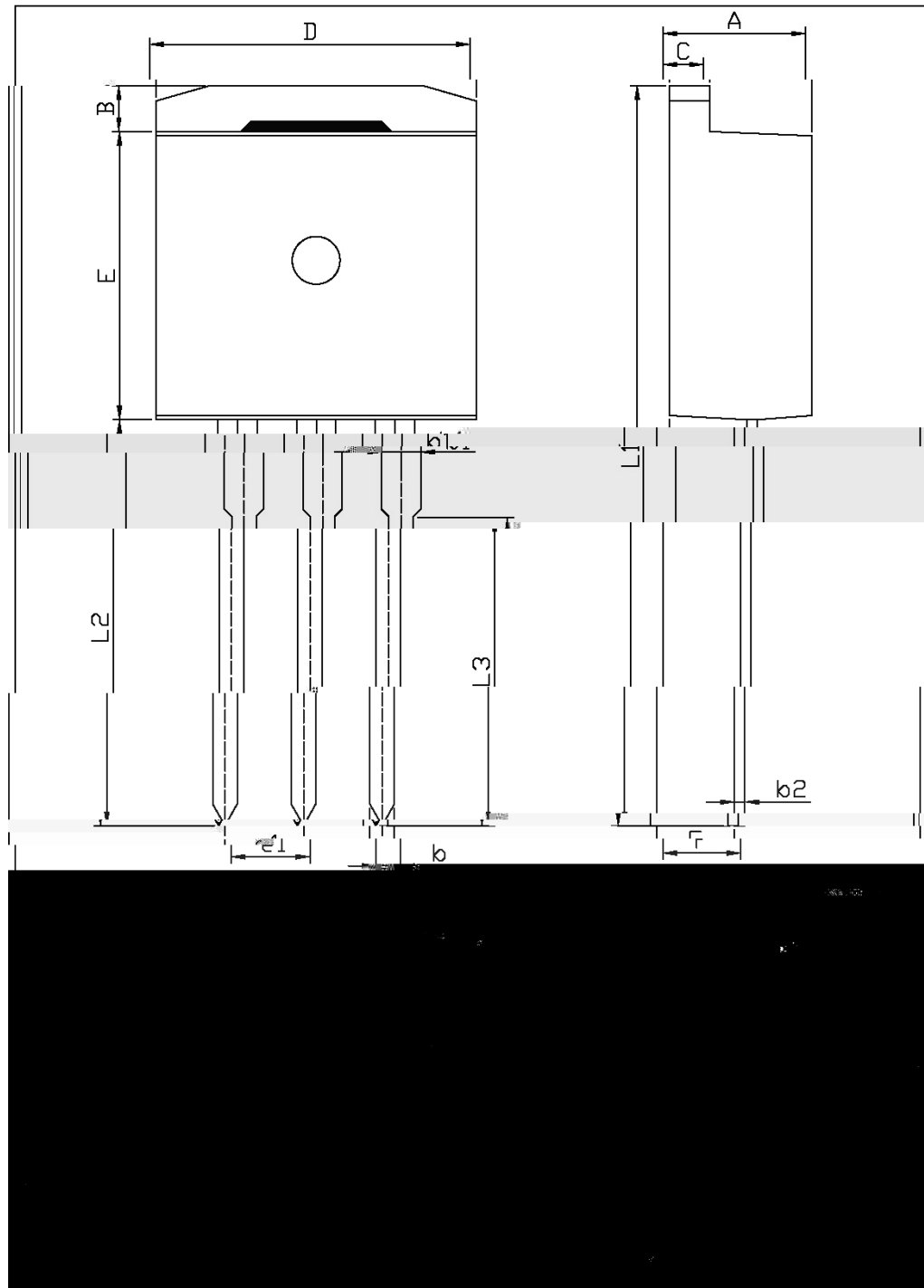


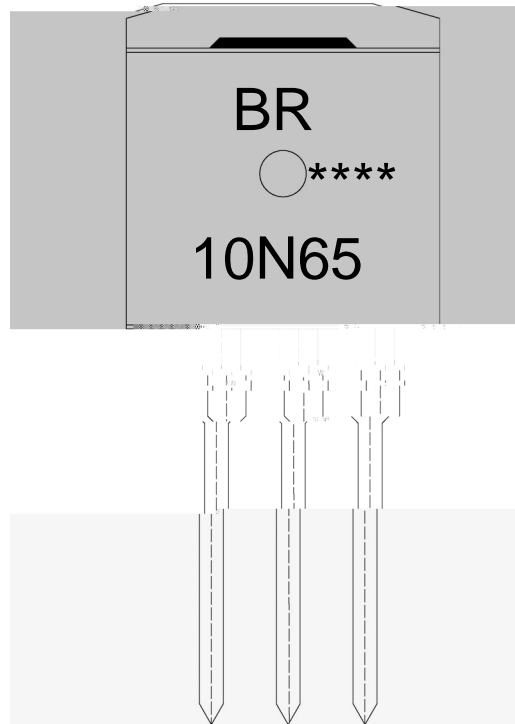
PIN1 G PIN 2 D 3 S

See Marking Instructions

Parameter	Symbol	Rating	Unit
Drain-Source Voltage	V_{DSS}	650	V
Drain Current	$I_D(T_C=25^\circ\text{C})$	10	A
Drain Current	$I_D(T_C=100^\circ\text{C})$	5.7	A
Drain Current - Pulsed	I_{DM}	38	A
Gate-Source Voltage	V_{GSS}	± 20	V
Single Pulsed Avalanche Energy	E_{AS}	488.9	mJ
Avalanche Current	I_{AR}	9.5	A







10N65

Note:

BR: Company Code

10N65: Product Type Code

****: Lot No. Code, code change with Lot No.

Note:

1 25 150 60