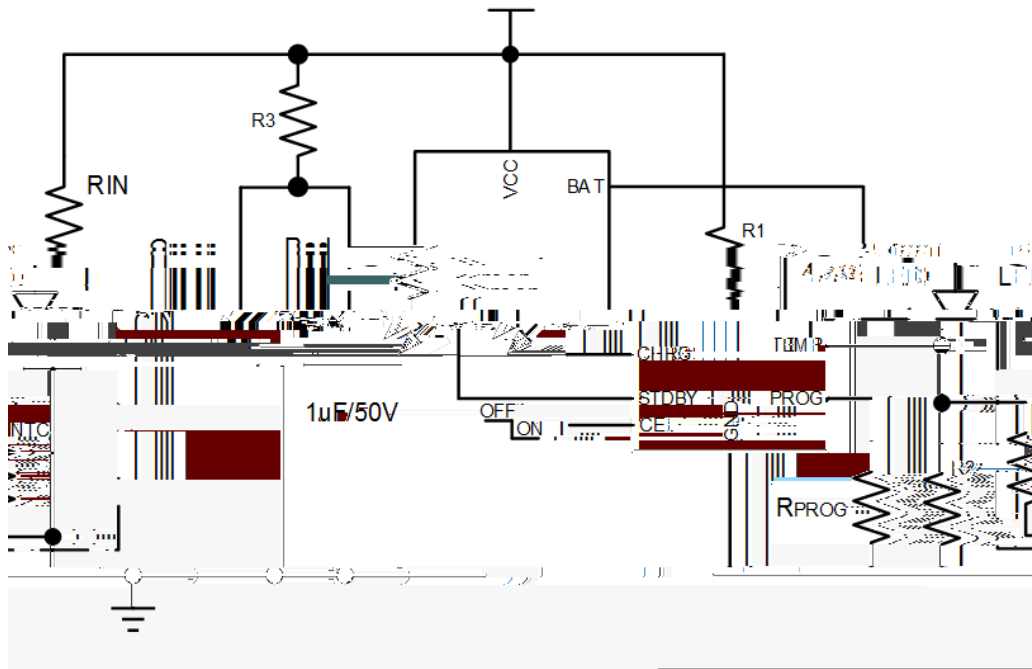
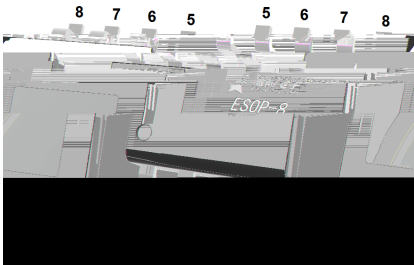


BRCL4058PSE-4.2



(M : M : : @ + % M :) : < D : L : < > E : 9 I : C + ' , / G J < \$ + % : < M :



PIN Num.	Symbol	
1	TEMP	
2	685-	- v ² ... €kÙá Šň-4*k ² -- vÝ4
3	GND	
4	VCC	
5	BAT	
6	STDBY	
7	CHRG	
8	CE	

PARAMETER

BRCL4058PSE-4.2

BRCL4058PSE-4.2

Rev.B May.-2025



蓝箭电子
BLUE ROCKET ELECTRONICS

DATA SHEET



BRCL4058PSE-4.2

1.0A

PCB

...1%

BRCL4058PSE-4.2

P

MOSFET

BRCL4058PSE-4.2

USB



VCC

UVLO

PROG

1%

BAT

V_{TRIKL}

BRCL4058PSE-4.2

1/10

BAT

V_{TRIKL}

BAT

V_{FLOAT}

BRCL4058PSE-4.2

1/10

PROG

PROG

$R_{PROG}=900/I_{CHG}$

$I_{CHG}=900/R_{PROG}$

PROG

$I_{BAT}=(V_{PROG}^2 - 900)/R_{PROG}$

A

R_{PROG}

R _{PROG} (K)	I _{CHG} (mA)
*% ' .	* ' .
)%) .	+ ' .
)% , .	+ , ' .
(% (.	+ / , .
(% ' .	,) ' .
(% / .	, 0' .
(% . .	- + ' .
(% . .	- 0' .
(%
(% (.	/ ' .
(% ' .	0 (' .

BRCL4058PSE-4.2
Rev.B May.-2025





/ Function description

◆ R1 R2

R1 R2

NTC RTL TL RTH TH RTL RTH
 TL TEMP

$$V_{TEMPL} = \frac{R2 || RTL}{R1 + R2 || RTL} V_{IN}$$

TH TEMP

$$V_{TEMPH} = \frac{R2 || RTH}{R1 + R2 || RTH} V_{IN}$$

$$V_{TEMPH} = V_{HIGH} = k2 \times V_{CC} (k2 - 0.8)$$

$$V_{TEMPL} = V_{LOW} = k1 \times V_{CC} (k1 - 0.45)$$

$$R1 = \frac{RTL \times RTH (k2 - k1)}{(RTL - RTH) k2 \times k1}$$

$$R1 = \frac{RTL \times RTH (k2 - k1)}{(RTH - RTL) k2 \times k1}$$

PTC

$$R1 = \frac{RTL \times RTH (k2 - k1)}{(RTH - RTL) k2 \times k1}$$

$$R2 = \frac{RTL \times RTH (k2 - k1)}{(RTH - RTL) k2 \times k1}$$

Vcc

R1 R2 RTH RTL

RTH RTL

R2

R1

R1

◆ UVLO

VCC

UVLO
100mV

UVLO

VCC

BRCL4058PSE-4.2

Rev.B May.-2025



蓝箭电子
BLUE ROCKET ELECTRONICS

DATA SHEET



IC

PD

$V_{IN}-V_{BAT}$

I_{CHG} :

$$P_D = (V_{IN}-V_{BAT}) * I_{CHG}$$

3.6V

4.0V

5%~10%

PD

BRCL4058PSE-4.2

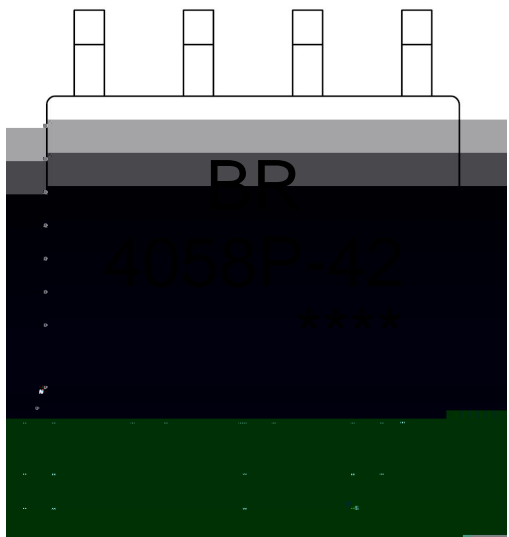
Rev.B May.-2025



蓝箭电子
BLUE ROCKET ELECTRONICS

DATA SHEET

/ Marking Instructions



9|
+', /G
+) +%mi
!!!!

() / K\ d g\ rXk\ r\ Prf\ jid\]f r ll I \]f w Jf q\ \rie^ŽPY-Fr\ž

