

BRCO2600Series

BRCO 2600Series

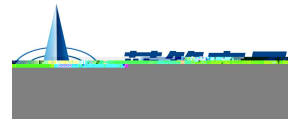
CMC



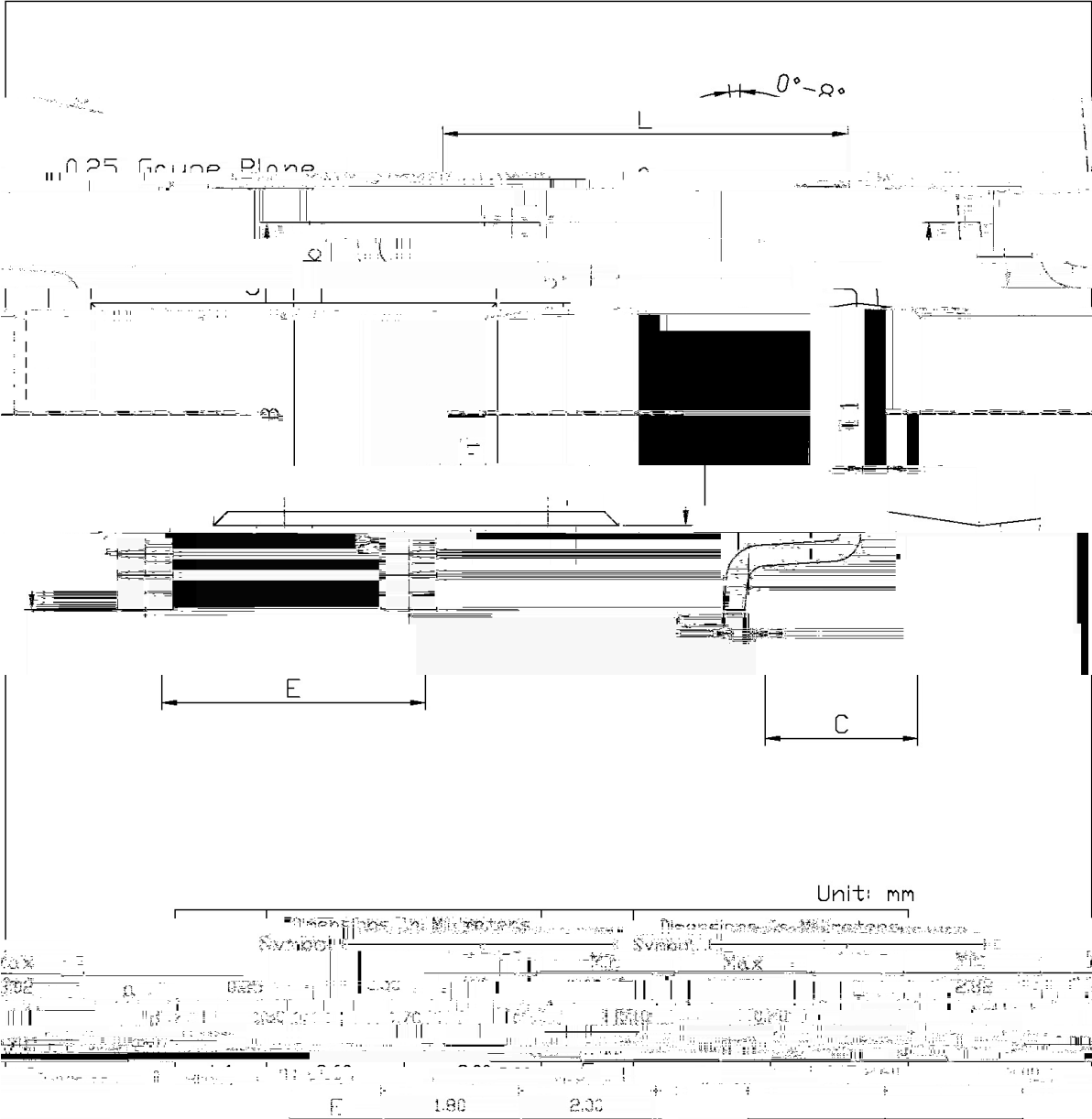
±

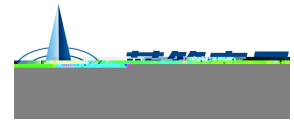




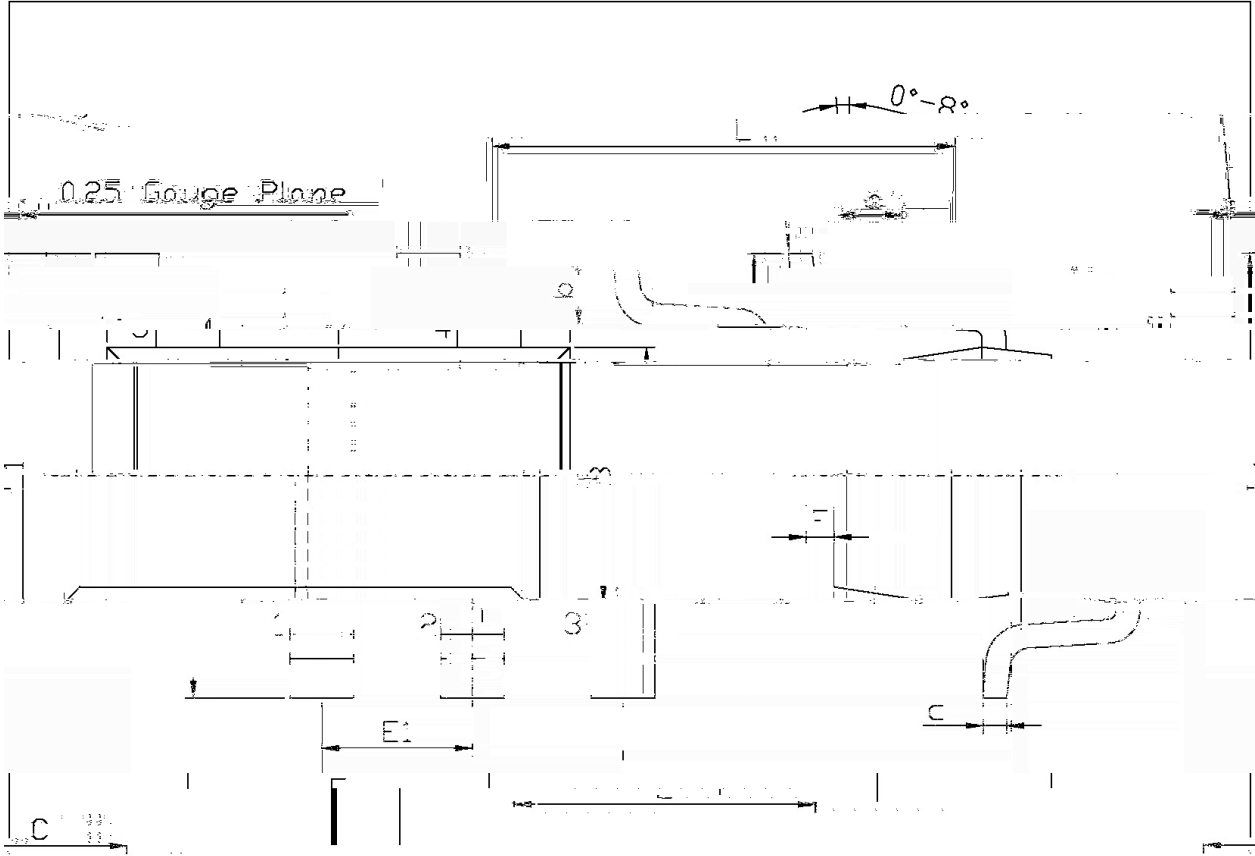


E F G H ° / Package Dimensions



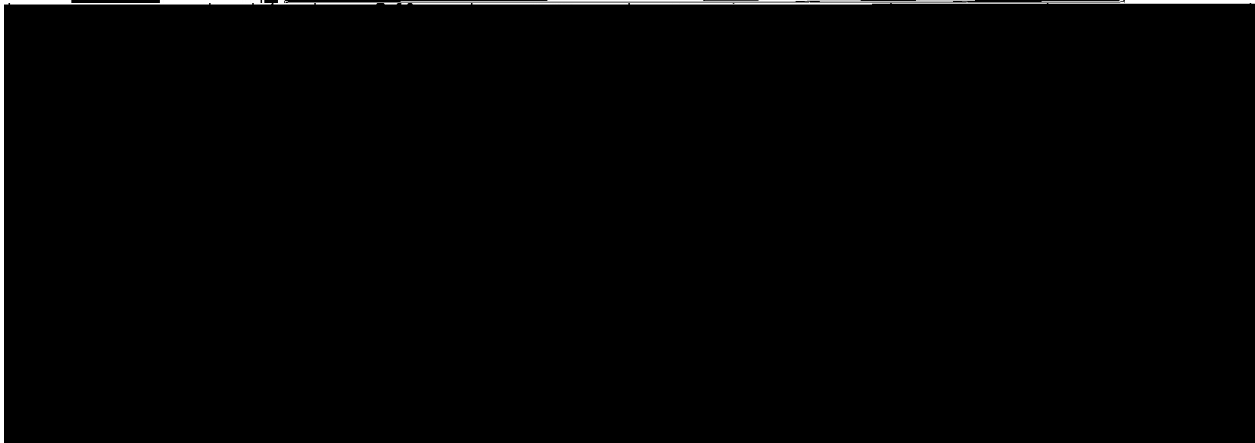


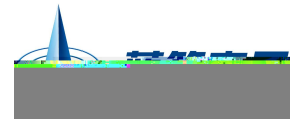
E F G H ° / Package Dimensions



Unit: mm

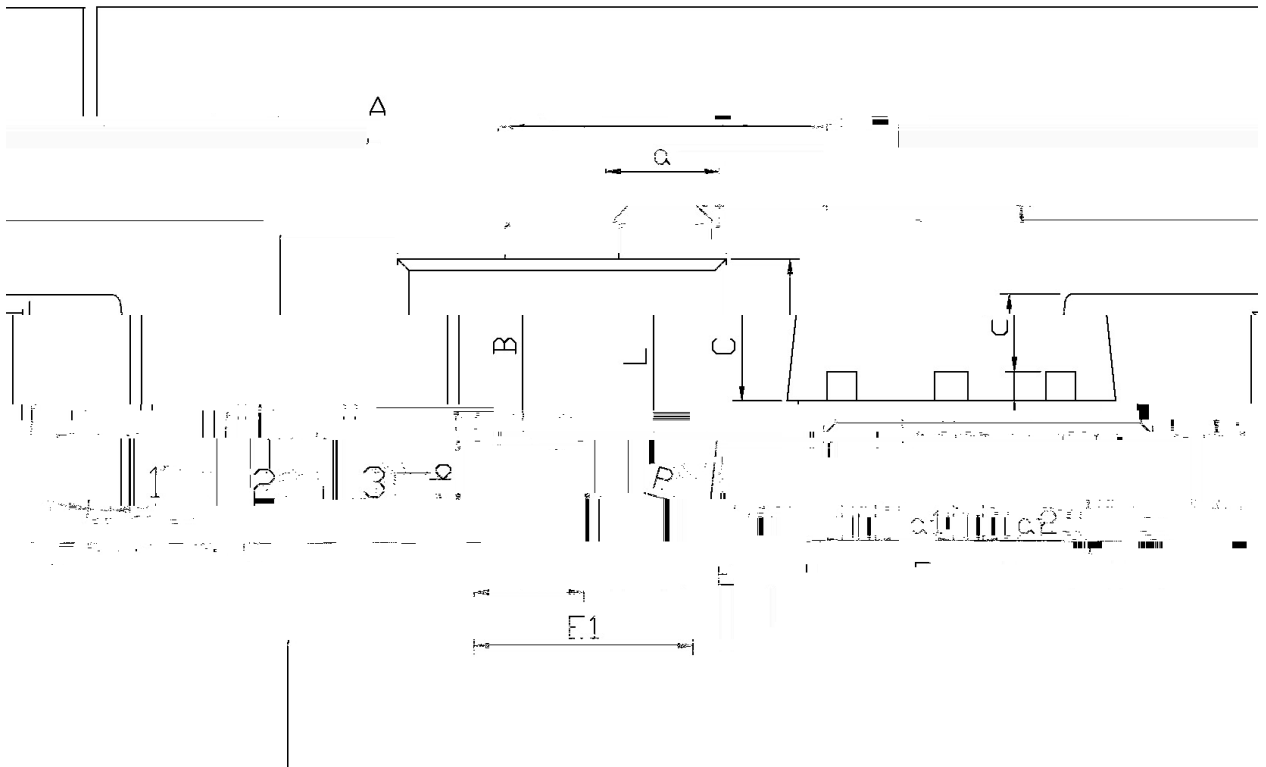
in Millimeters		Symbol		Dimensions in Millimeters		Dimensions in Millimeters	
Min	Max	Min	Max	Symbol	Max	Symbol	Max
1.50	1.70	0.25	0.35	C	1.50	E1	1.50





E F G H ° / Package Dimensions

單位: mm



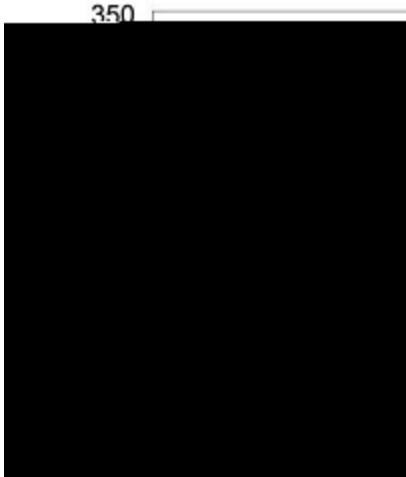
Dimensions In Millimeters		Dimensions In Inches	
A	4.4 ~ 4.7	0.36 ~ 0.56	
B	1.40	0.55	
C	1.25	0.50	
E	1.40 ~ 1.60	0.55 ~ 0.63	
E1	2.80 ~ 3.20	0.11 ~ 0.13	
b	0.80 ~ 1.20	0.03 ~ 0.05	

BRCO2600Series

I J K " "

BRCO2600Series

MN OP Q = > ° (R S) / T @ & U @ # f l % @ V % W @ W % X Y @ Z [† Ž @ \$]



±

±

±

_ O ` a b c d e / Resistance to Soldering Heat Test Conditions

±

±

±

f g h i / Packaging SPEC.

封装形式	Units/Reel	Reels/Inner Box	Ur
	/	/	
~ ~ ~ ~ ~ 1 /	f f f f f V	£ f V	

封装形式	Units/Reel	Reels/Inner Box	U
	只/卷盘	卷盘/盒	
SOT-89	1,000	7	

~ ~ ~ ~ ~ 1 / f i ~	Units/Reel	Reels/Inner Box	Uni
	/	/	
f l £ † Ž ~	f f f f f f f V	£ f V	£

j + K L / Notices