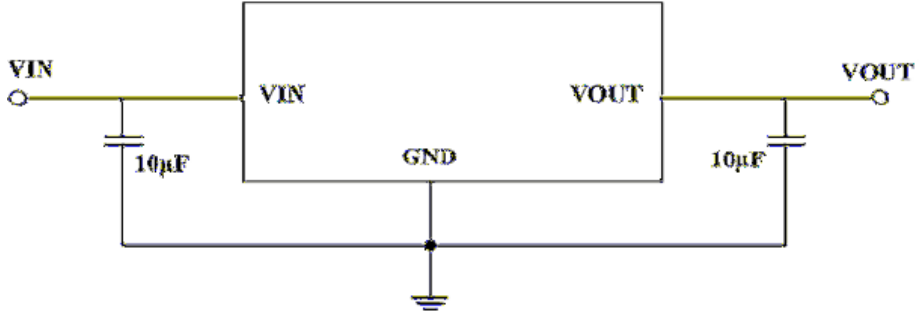


| | | | |
|--|-----------|------------|----|
| | | | |
| | V_{IN} | -0.3 to 40 | V |
| | I_{OUT} | 600 | mA |
| | P_D | 0.6 | W |
| | T_{stg} | | |

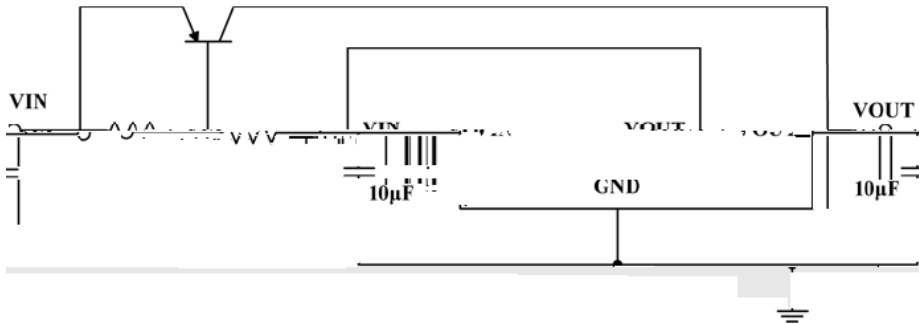
BRCO7333HT
Rev.B Apr.-2024

/ Typical Application Circuit

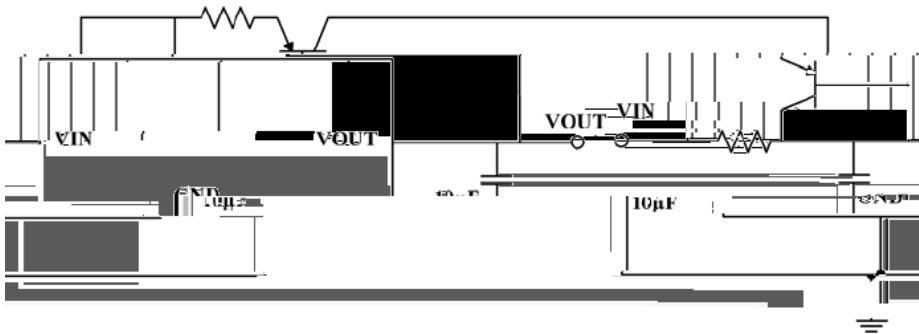
/ Basic Application



/ High Output Current Voltage Regulator

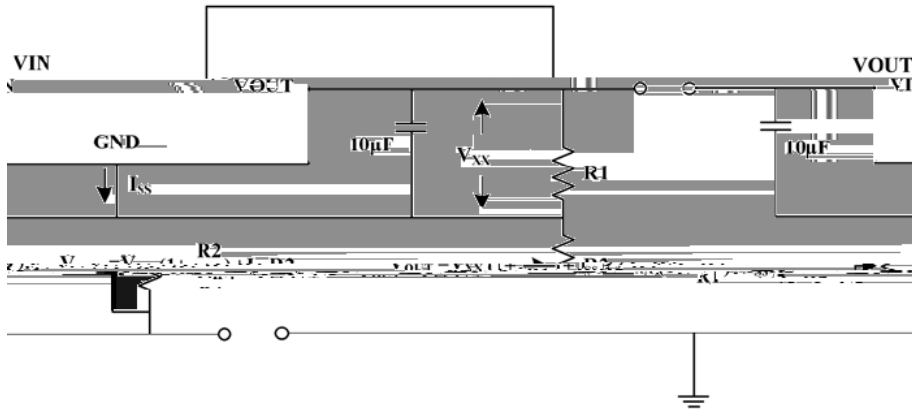


/ Short-Circuit Protection

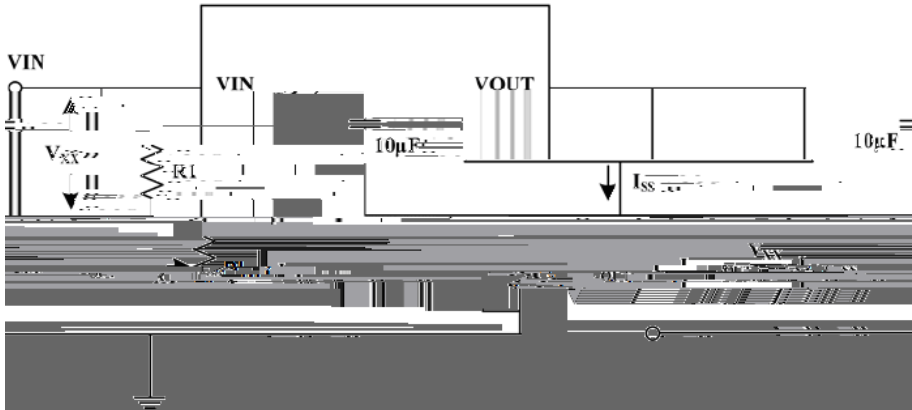


/ Typical Application Circuit

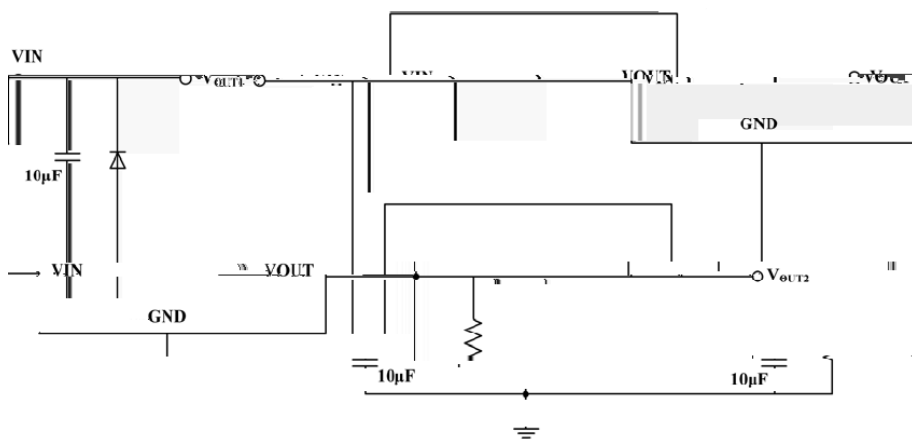
/ Circuit for Increasing Output Voltage



/ Constant Current Regulator

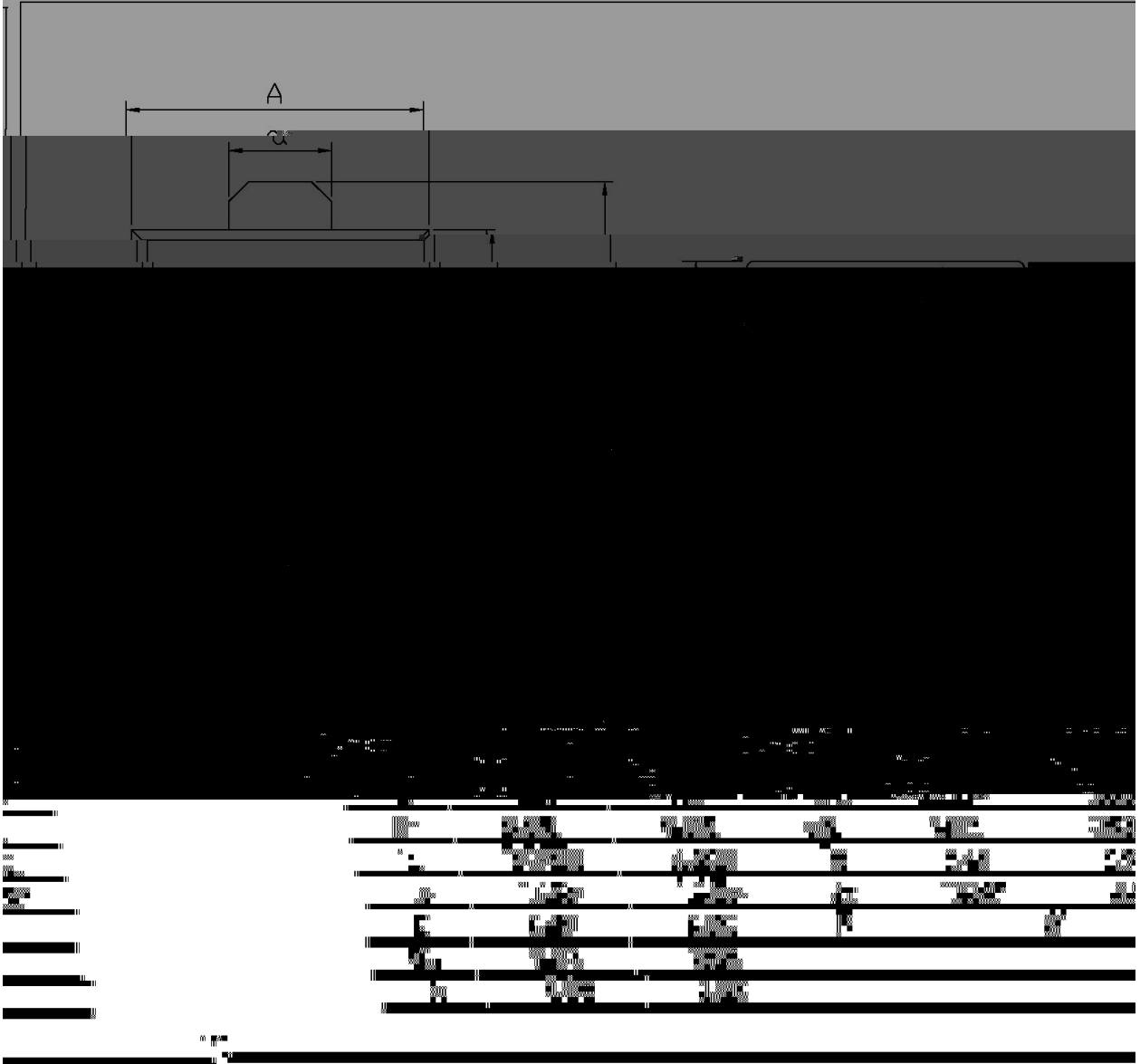


/ Double Output Circuit

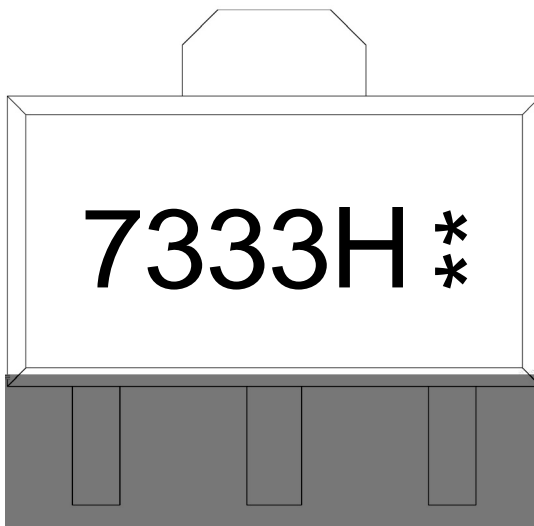


SUT-89

单位: mm



/ Marking Instructions



7333H

**

Note1

7333H: Product Type Code

**: Lot No. Code, code change with Lot No

() / Temperature Profile for IR Reflow Soldering(Pb-Free)

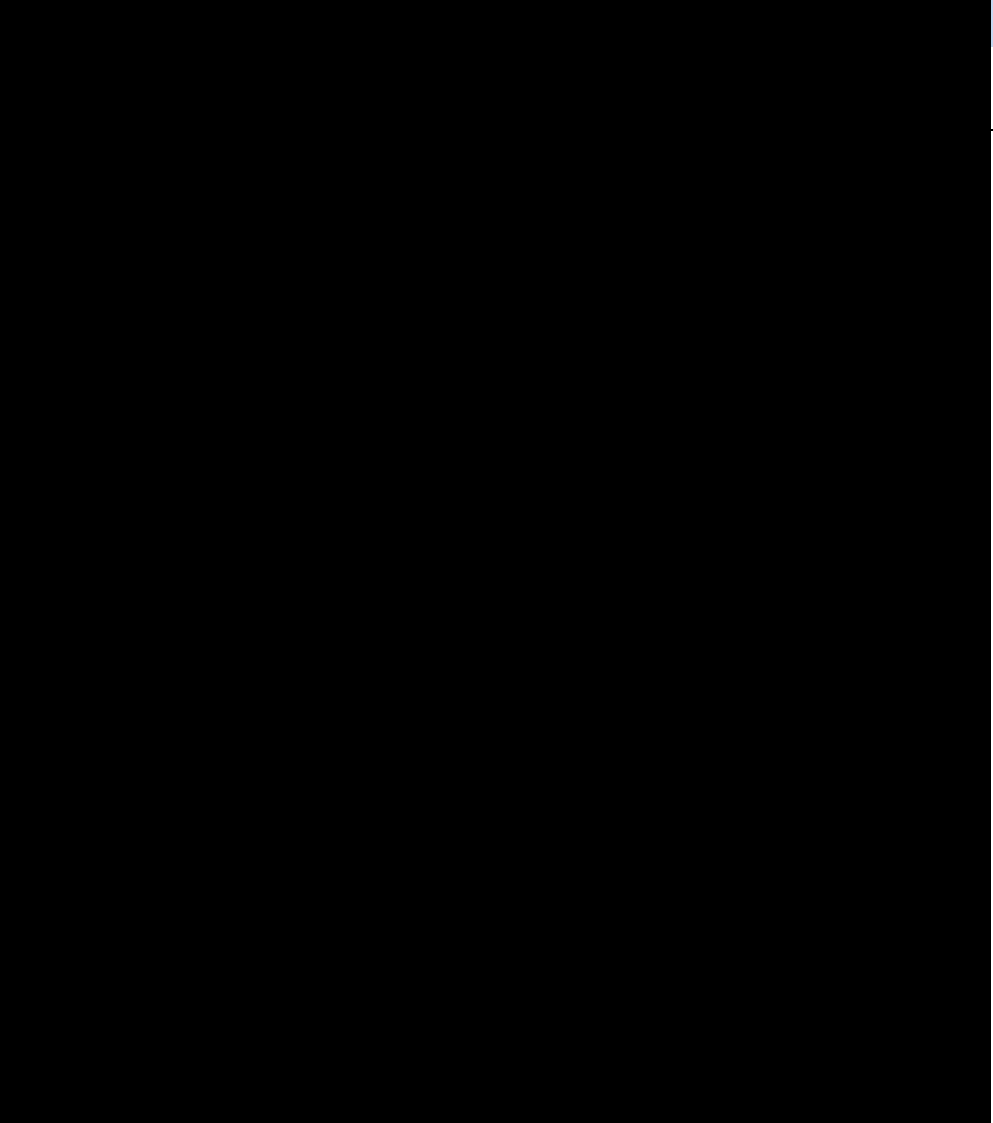
| |
|--|
| |
| |
| |
| |
| |
| |
| |
| |

Note:

- | | | | |
|---|-----------|-------------|---|
| 1 | 150 ~ 180 | 60 ~ 90sec; | 1.Preheating:150~180 , Time:60~90sec. |
| 2 | 245±5 | 5±0.5sec; | 2.Peak Temp.:245±5 , Duration:5±0.5sec. |
| 3 | 2 ~ 10 | /sec. | 3. Cooling Speed: 2~10 /sec. |

/ Resistance to Soldering Heat Test Conditions

| | | | |
|-------|-----------|-------------|---------------|
| 260±5 | 10±1 sec. | Temp.:260±5 | Time:10±1 sec |
|-------|-----------|-------------|---------------|



| | |
|-----------|-------------------------|
| Dimension | (unit mm ³) |
|-----------|-------------------------|