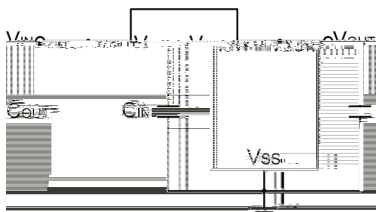


## / Descriptions

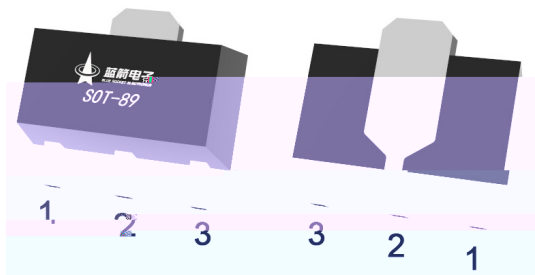
## / Features

## / Applications

## / Equivalent Circuit



## / Pinning



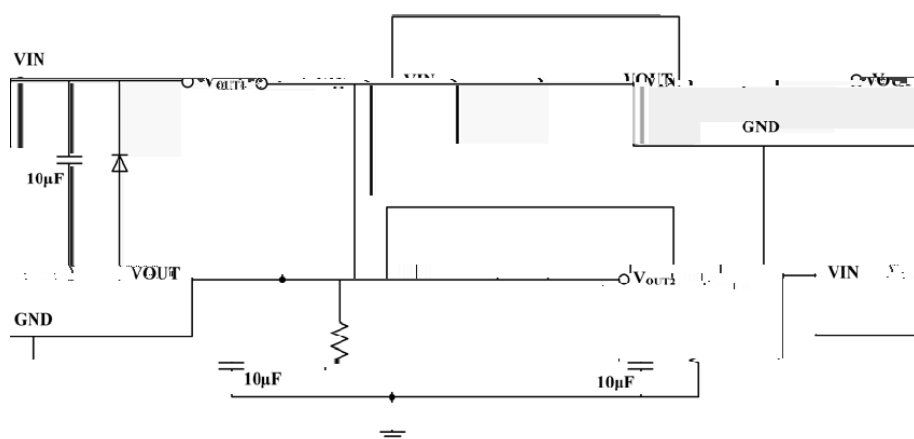
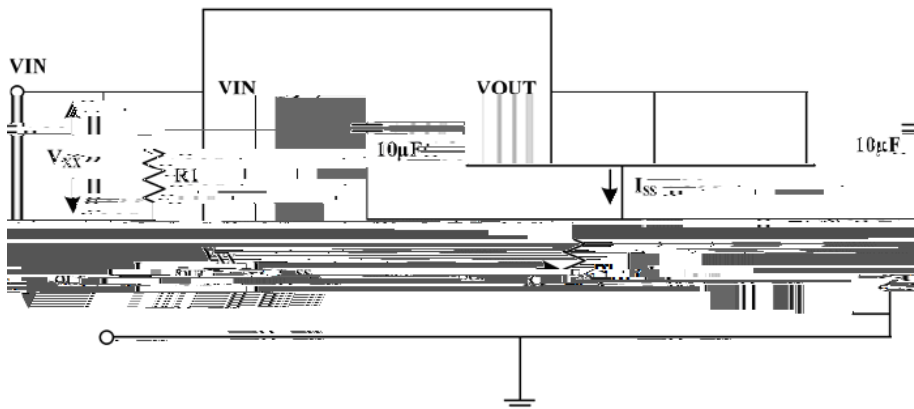
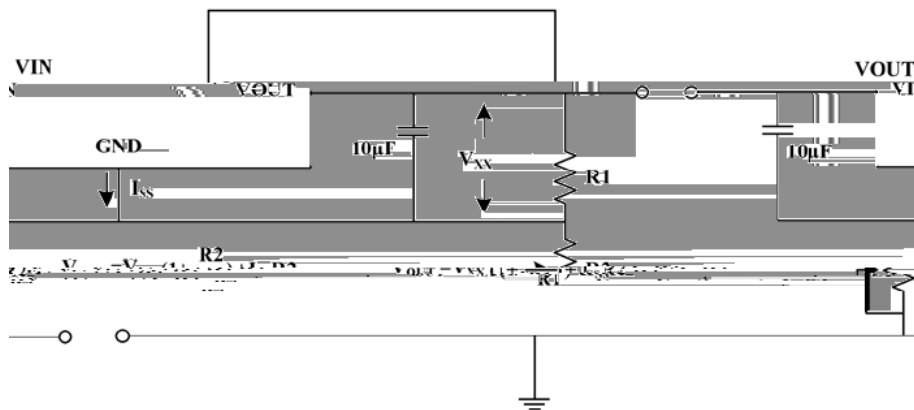
## / Marking



/ Electrical Characteristics(  $T_A=25$  ,  $V_{IN}=V_{OUT}+1V$ ,  $C_{IN}=C_{OUT}=1\mu F$ , unless otherwise specified)

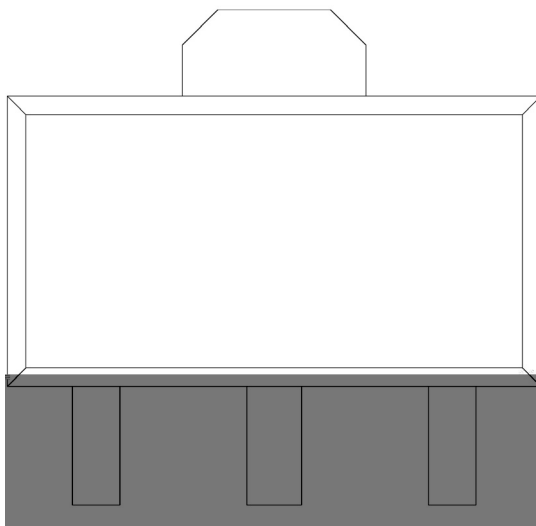

**BRCO7350HT**

/ Typical Application Circuit



**BRCO7350HT**

/ Marking Instructions



**( ) / Temperature Profile for IR Reflow Soldering(Pb-Free)**


**/ Resistance to Soldering Heat Test Conditions**

**/ Packaging SPEC.**

--	--	--