

# BRC07533MMC

Rev.C Mar.-2026

## / Descriptions

Low dropout linear regulator in a SOT23-3 Plastic Package.

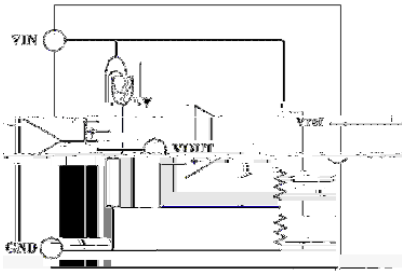
## / Features

Low power consumption,Low voltage drop,Small temperature drift coefficient,High input voltage up to 24V,The static current 1.5 A,The output voltage accuracy ,HF Product.

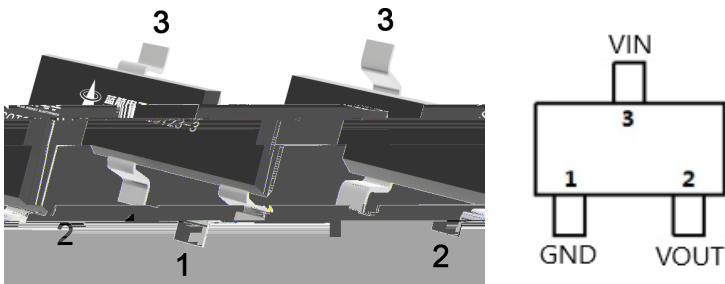
## / Applications

For use in power equipment,Communication equipment,Audio and video equipment.

## / Equivalent Circuit



## / Pinning



1	GND		3	VIN	
2	VOUT				

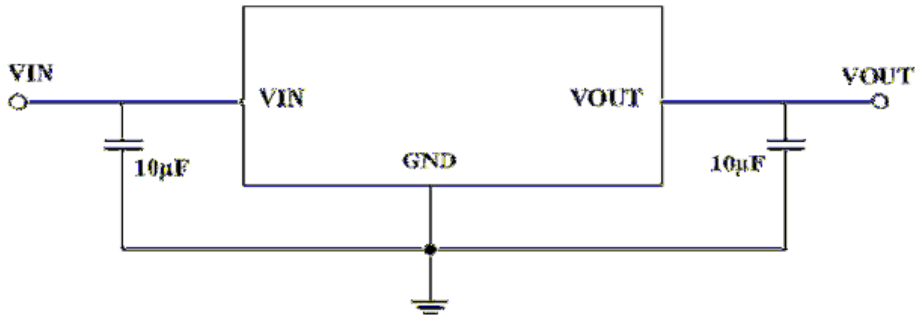
## / Marking

See Marking Instructions.

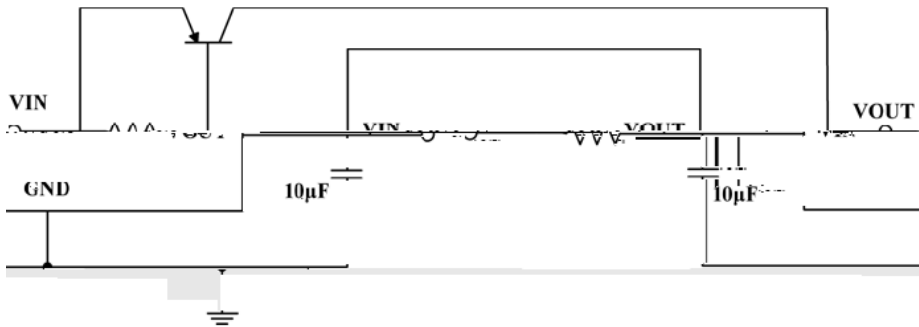


## / Typical Application Circuit

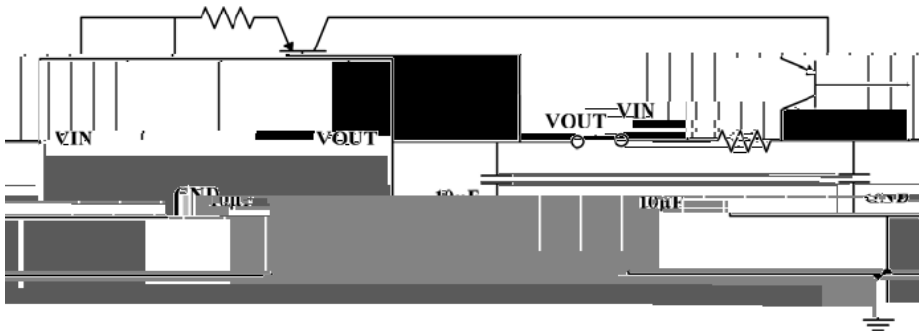
/ Basic Application



/ High Output Current Voltage Regulator

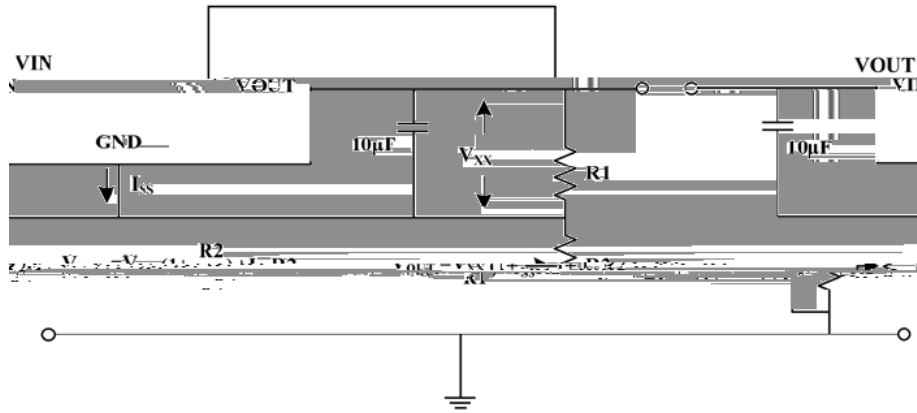


/ Short-Circuit Protection

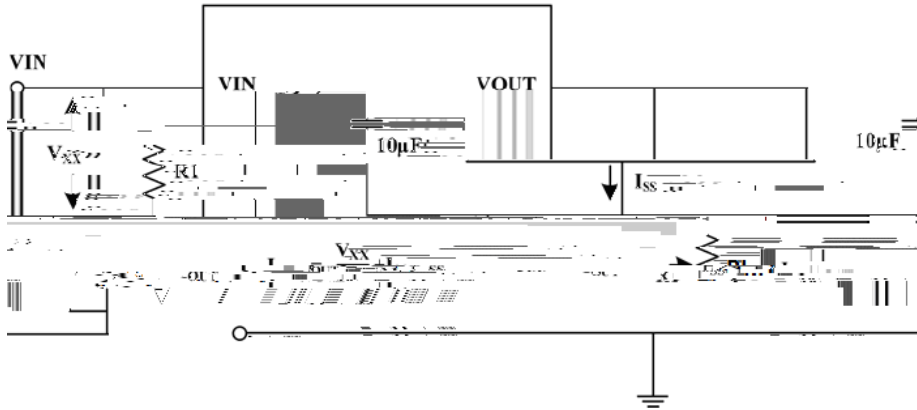


**/ Typical Application Circuit**

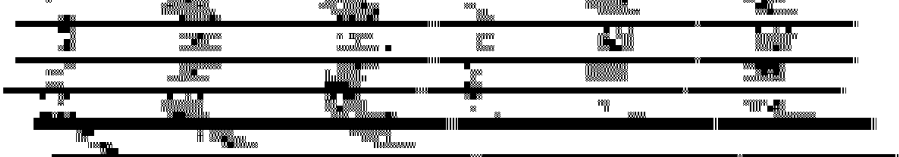
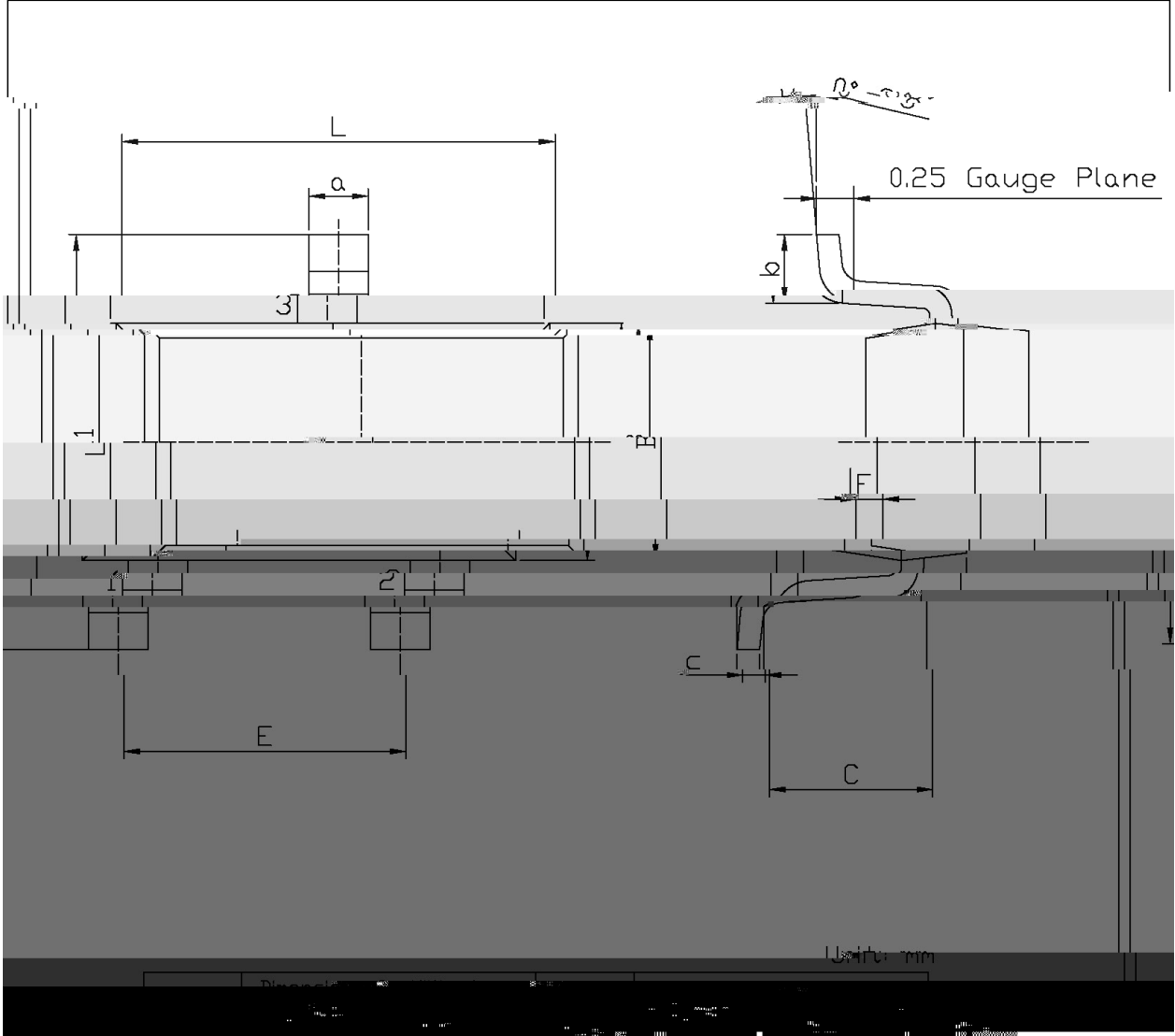
/ Circuit for Increasing Output Voltage



/ Constant Current Regulator



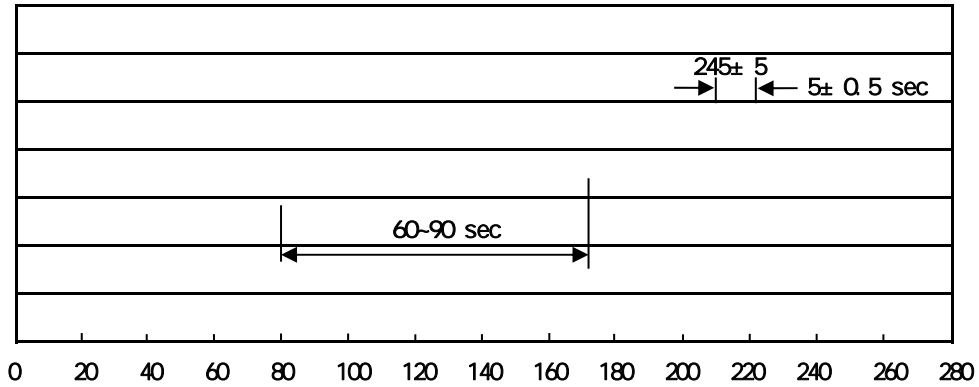
/ Package Dimensions



**BRCO7533MMC**

Rev CRM Rae - RZ eSHE T

**( ) / Temperature Profile for IR Reflow Soldering(Pb-Free)**



Note:

- |   |     |     |    |          |   |
|---|-----|-----|----|----------|---|
| 1 | 150 | 180 | 60 | 90sec;   | 1.Preheating:150~180 , Time:60~90sec.   |
| 2 | 245 | 5   | 5  | 0.5sec;  | 2.Peak Temp.:245 5 , Duration:5 0.5sec. |
| 3 |     |     | 2  | 10 /sec. | 3. Cooling Speed: 2~10 /sec.            |

**/ Resistance to Soldering Heat Test Conditions**

260 ± 5                      10 ± 1 sec.                      Temp.:260±5                      Time:10±1 sec

**/ Packaging SPEC.**

/ REEL

Package Type	Units					Dimension (unit mm <sup>3</sup> )		
	Units/Reel	Reels/Inner Box	Units/Inner Box	Inner Boxes/Outer Box	Units/Outer Box	Reel	Inner Box	Outer Box
SOT23-3	3,000	10	30,000	4	120,000	7 x8	210x205x205	445x435x230

**/ Notices**