

# BRC07550MMC

Rev.C Mar.-2026

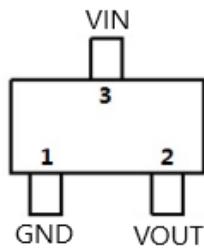
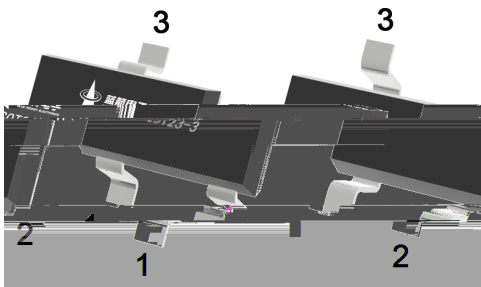
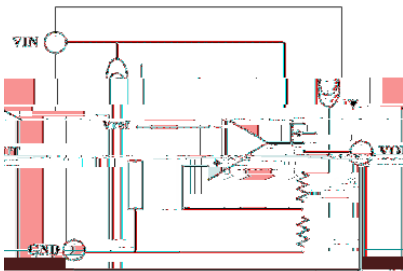
JFK) \* \$\*

Low dropout linear regulator in a SOT23-3 Plastic Package.

) +M (%μ8 ±) %

Low power consumption, Low voltage drop, Small temperature drift coefficient, High input voltage up to 24V, The static current 1.5μA, The output voltage accuracy: ±) %, HF Product.

For use in power equipment, Communication equipment, Audio and video equipment.



1	GND		3	VIN	
2	VOUT				

## / Marking

See Marking Instructions.



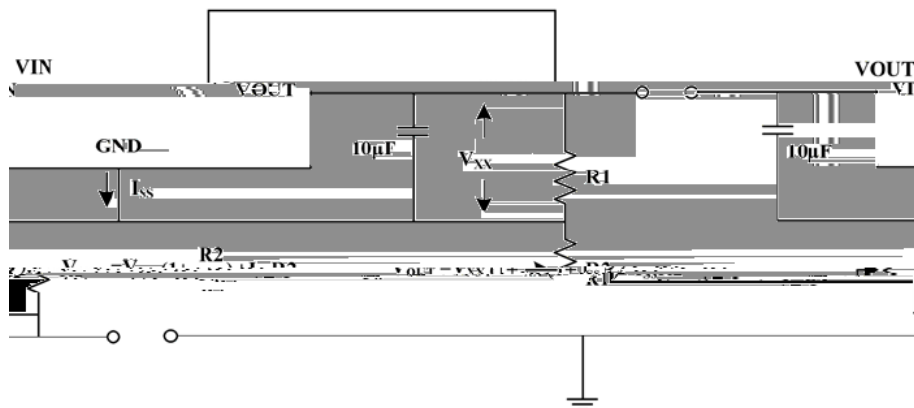
# **BRCO7550MMC**

Rev.C Mar.-2026

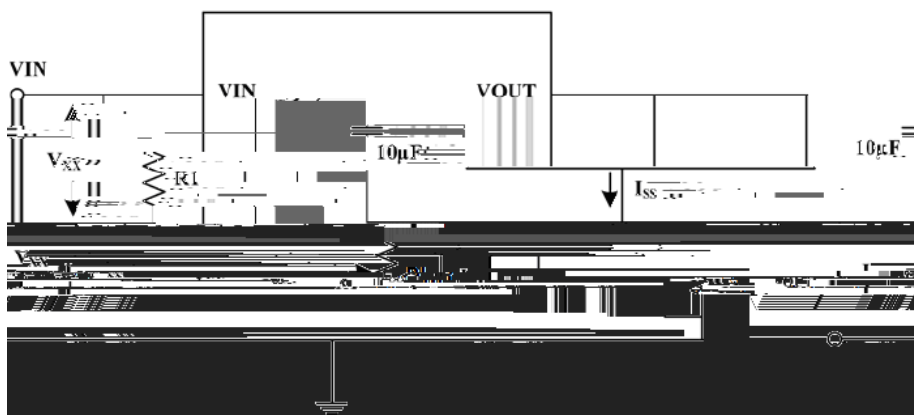
**DATA SHEET**

**/ Typical Application Circuit**

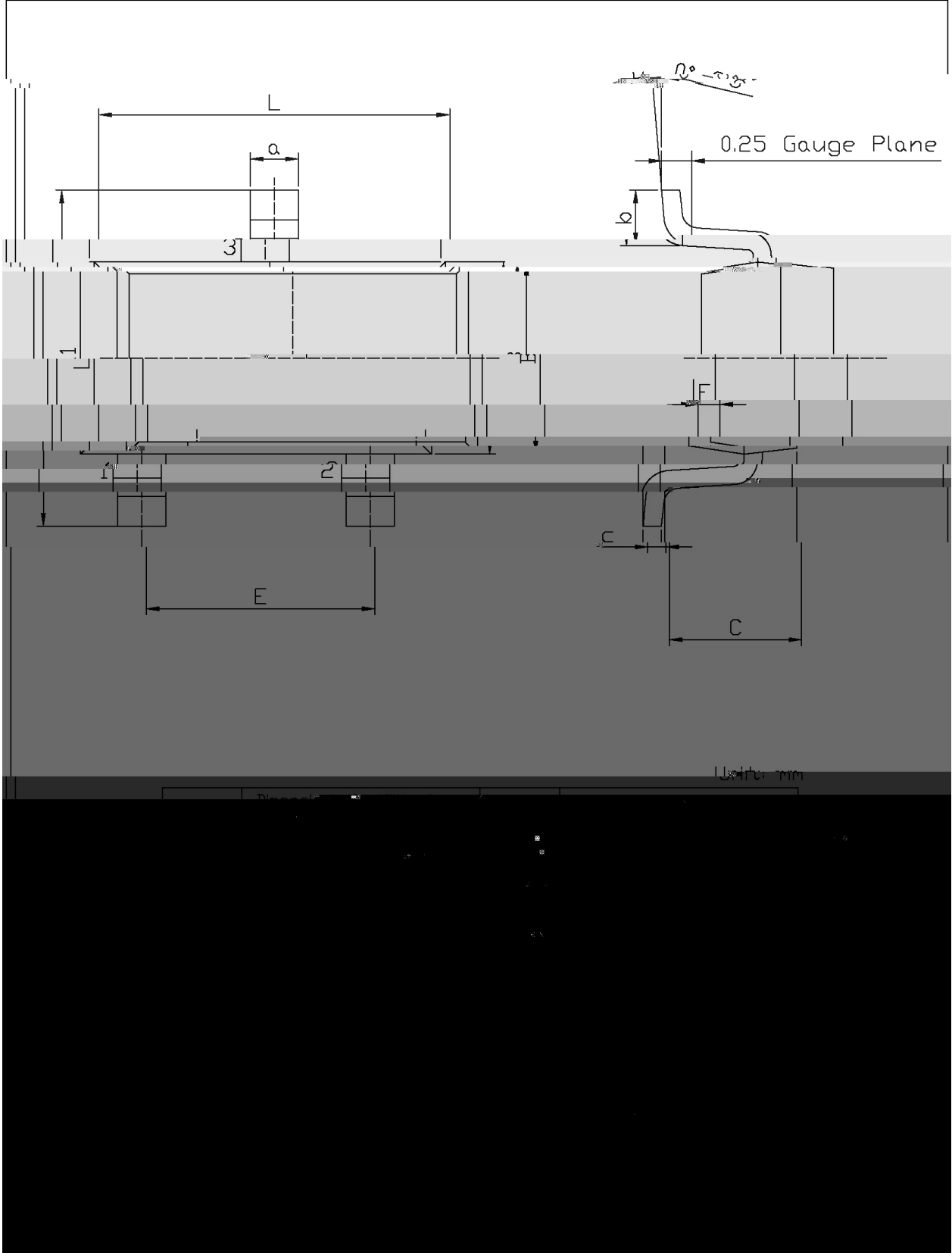
/ Circuit for Increasing Output Voltage



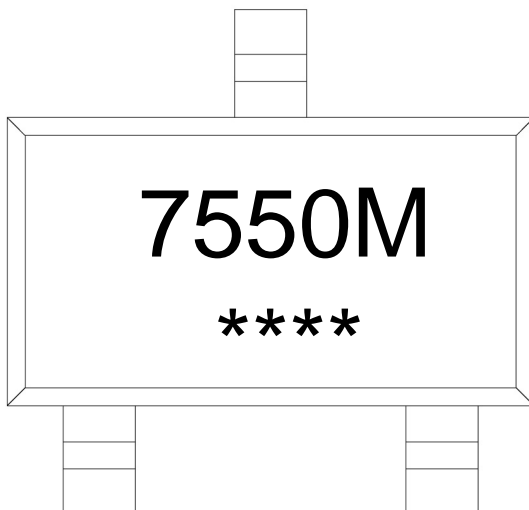
/ Constant Current Regulator



**/ Package Dimensions**



**/ Marking Instructions**



7550M

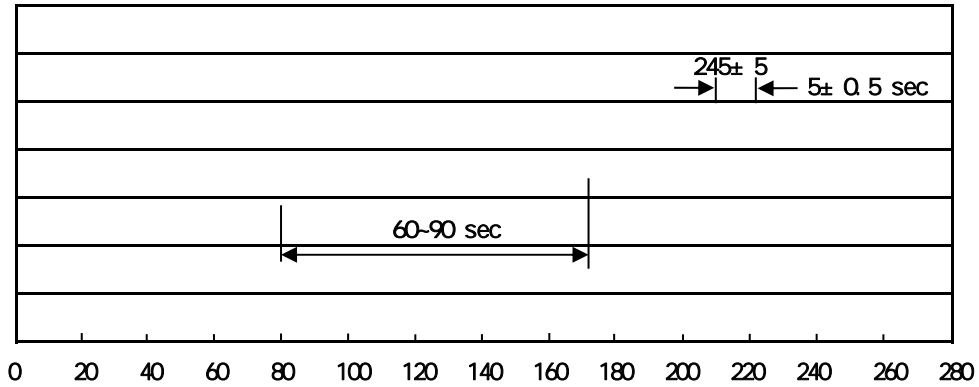
\*\*\*\*

Note:

7550M: Product Type Code

\*\*\*\*: Lot No. Code, code change with Lot No

**( ) / Temperature Profile for IR Reflow Soldering(Pb-Free)**



**Note:**

- |   |         |           |   |
|---|---------|-----------|---|
| 1 | 150 180 | 60 90sec; | 1.Preheating:150~180 , Time:60~90sec.   |
| 2 | 245±5   | 5±0.5sec; | 2.Peak Temp.:245±5 , Duration:5±0.5sec. |
| 3 | 2 10    | /sec.     | 3. Cooling Speed: 2~10 /sec.            |

**/ Resistance to Soldering Heat Test Conditions**

260±5                      10±1 sec.                      Temp.:260±5                      Time:10±1 sec

**/ Packaging SPEC.**

**/ REEL**

Package Type	Units					Dimension (unit mm <sup>3</sup> )		
	Units/Reel	Reels/Inner Box	Units/Inner Box	Inner Boxes/Outer Box	Units/Outer Box	Reel	Inner Box	Outer Box
SOT23-3	3,000	10	30,000	4	120,000	7 x8	210x205x205	445x435x230

**/ Notices**