

Rev.B Jul.-2024

SOT-89

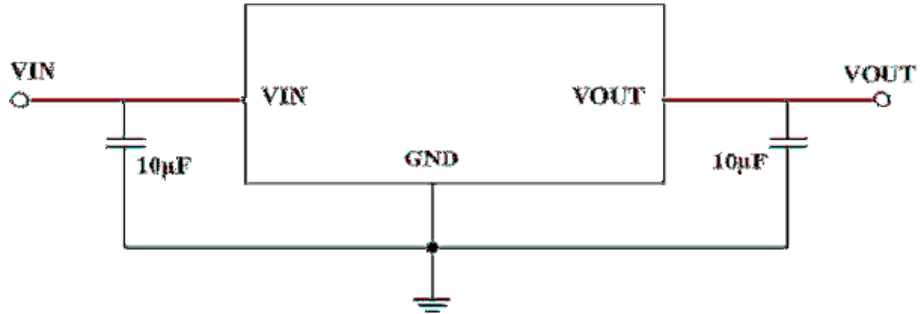
Low dropout linear regulator in a SOT-89 Plastic Package .

24V

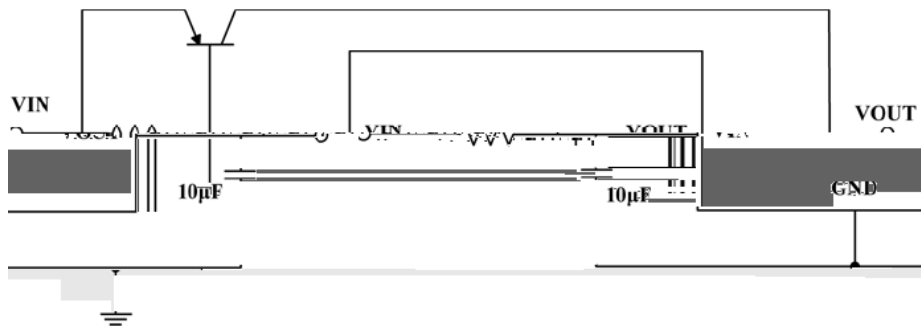
1.5 $\mu$

Parameter	Symbol	Rating	Unit
Working Voltage	$V_{IN}$	-0.3~+24	V
Thermal Resistance	$R_{JA}$	200	/W
Power Consumption	$P_D$		

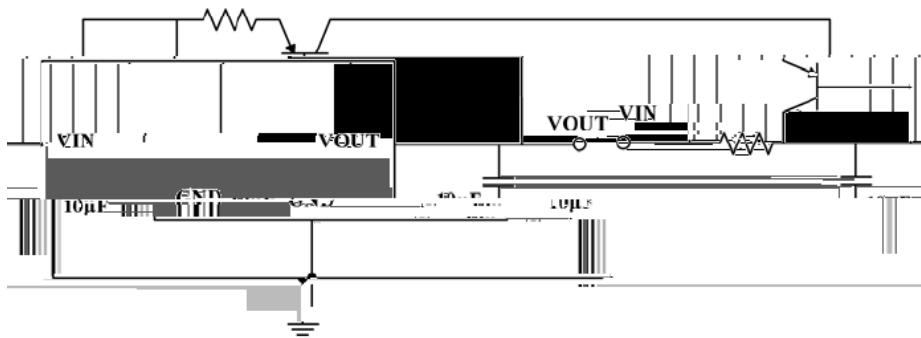
/ Basic Application



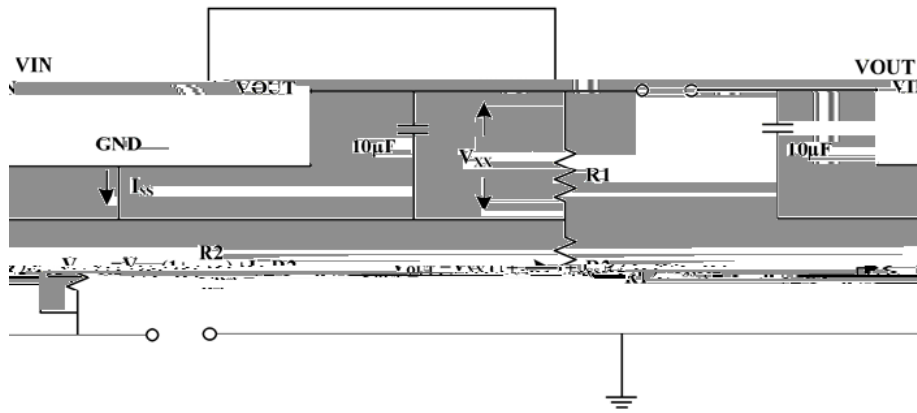
/ High Output Current Voltage Regulator



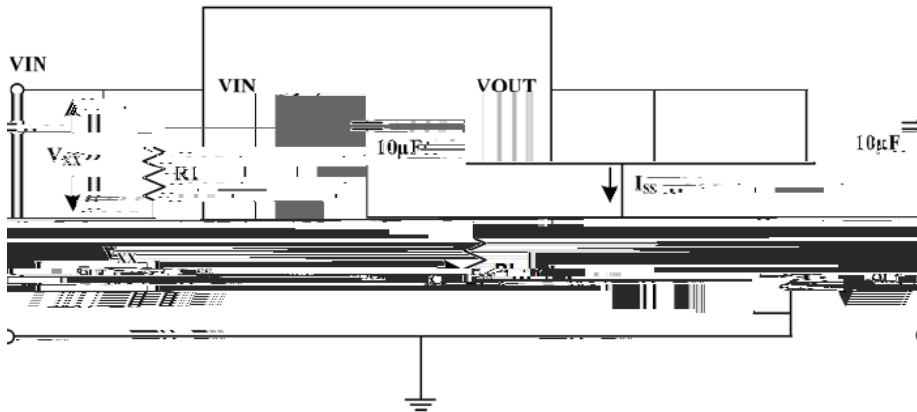
/ Short-Circuit Protection



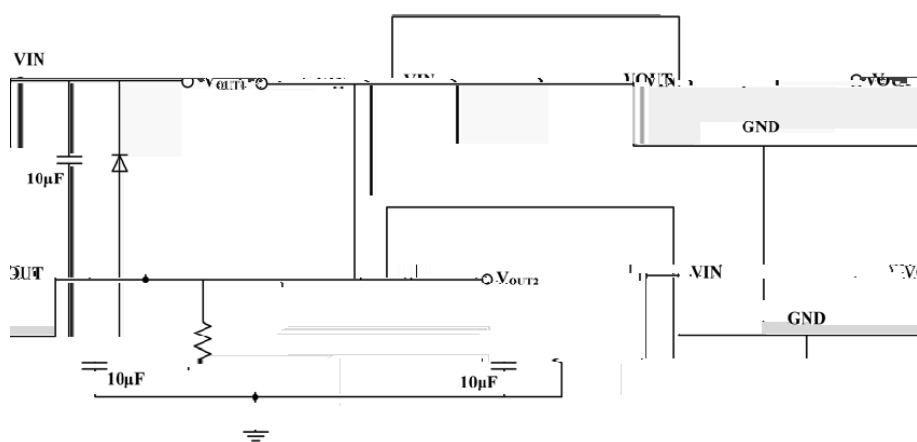
/ Circuit for Increasing Output Voltage



/ Constant Current Regulator



/ Double Output Circuit







Temperature Profile for IR Reflow Soldering(Pb-Free)


Note:

1            150   180            60