

SOT-89

Low dropout linear regulator in a SOT-89 Plastic Package.

30V

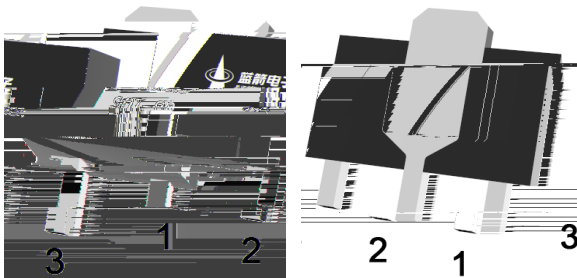
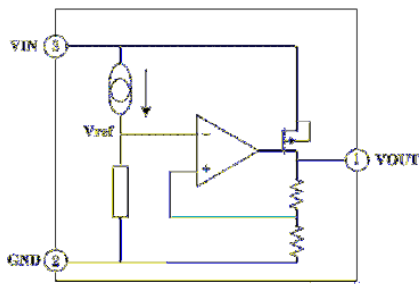
 2.5 μ A

 $\pm 2\%$

AEC-Q100

Low power consumption, Low voltage drop, Small temperature drift coefficient, High input voltage up to 30V, The static current 2.5 μ A, The output voltage accuracy: $\pm 2\%$, Qualified to AEC-Q100 Standards for High Reliability, HF Product.

For use in power equipment, Communication equipment, Audio and video equipment, Meet the stringent requirements of automotive applications.



PIN1 VOUT PIN 2 GND PIN 3 VIN

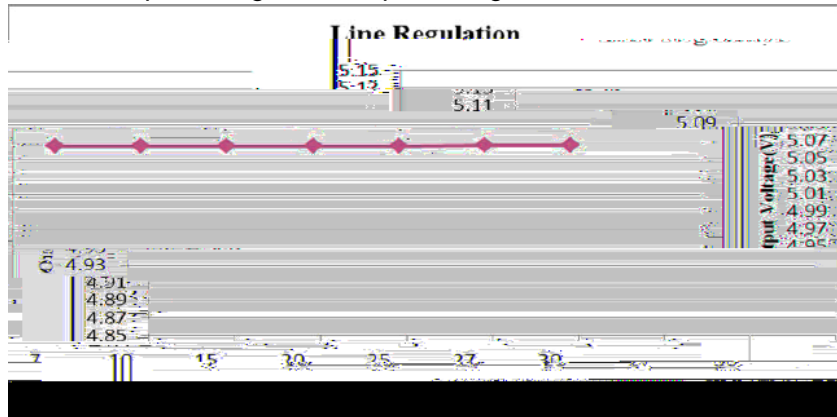
/ See Marking Instructions.

Parameter	Symbol	Rating	Unit
Working Voltage	V_{IN}	-0.3~33	V
Thermal Resistance	R_{JA}	200	/W
Power Consumption	P_W	500	mW
Storage Temperature	T_{STG}	-50~+125	
Working Temperature	T_A	-40~+85	

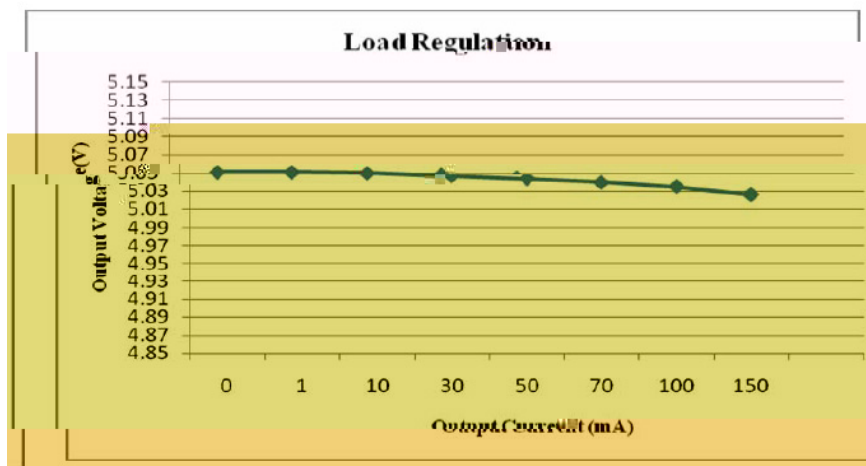
Notes: If the device operating conditions over the maximum rating of the above-mentioned conditions, may cause permanent damage to the device. The above parameters is only part of the operating conditions the maximum, we do not recommend the device running outside the scope of this specification. If the device to work long hours under the condition of absolute maximum limit, its stability may be affected.

Parameter	Symbol	Test Conditions	Min	Typ	Max	Unit
-----------	--------	-----------------	-----	-----	-----	------

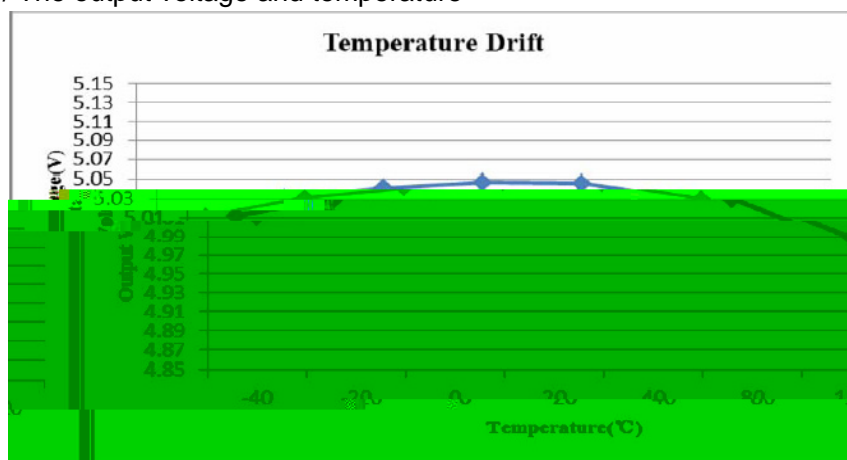
/ The input voltage and output voltage

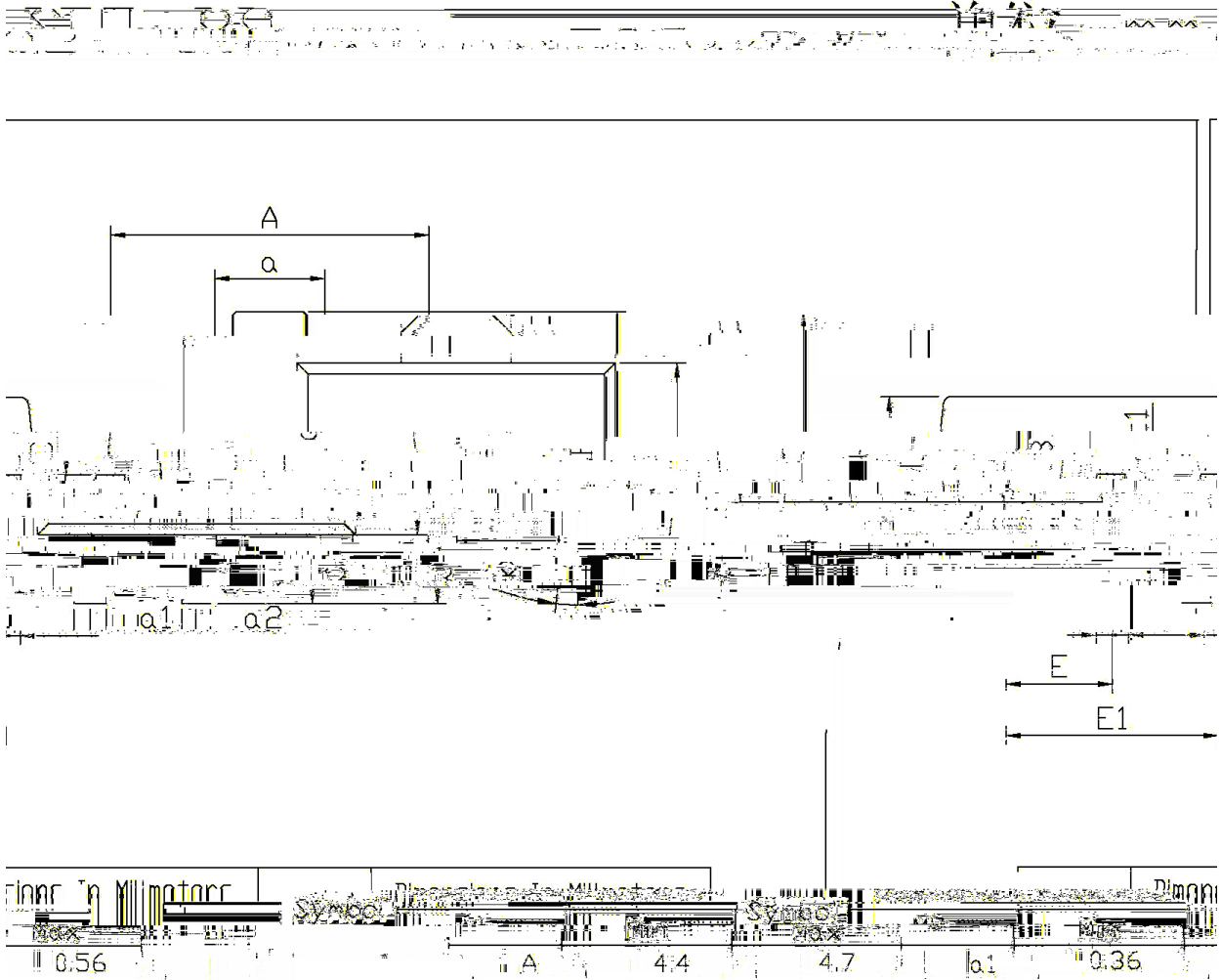

 $I_{OUT}=10mA$

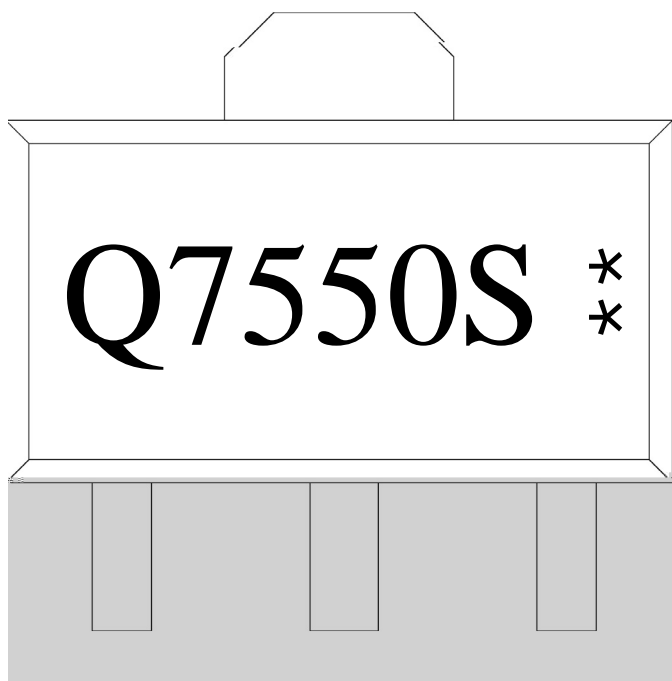
/ The output voltage and load current


 $V_{IN}=7.0V$

/ The output voltage and temperature


 $V_{IN}=7.0V$
 $I_{OUT}=10mA$





Q

7550S

**

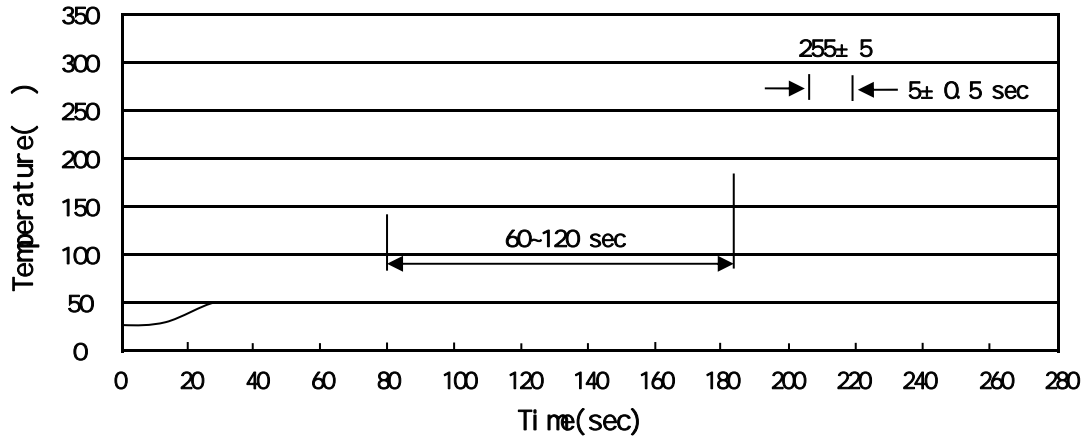
Note:

Q: Automobile halogen-free product Code

7550S: Product Type

** : Lot No. Code, code change with Lot No

Temperature Profile for IR Reflow Soldering(Pb-Free)



Note:

- 1 150 200 60 120sec; 1.Preheating:150~200 , Time:60~120sec.
- 2 255±5 5±0.5sec; 2.Peak Temp.:255±5 , Duration:5±0.5sec.
- 3 2 10 /sec. 3. Cooling Speed: 2~10 /sec.

260±5 10±1 sec. Temp.:260±5 Time:10±1 sec

/ REEL

Package Type	Units					Dimension (unit mm)		
	Units/Reel	Reels/Inner Box	Units/Inner Box	Inner Boxes/Outer Box	Units/Outer Box	Reel	Inner Box	Outer Box
SOT-89	1,000	7	7,000	6	42,000	7 ×12	180×120×180	390×385×205