

~	° " ' / fi fl	° " Ł ł / Ž ž	! "	# \$
%	& ' ( ) * ( (			
+	& ' & ' *	(	, - . / 0 1 2 3 4	5 6 7

; & ' & ( \* < \* ( )

**/ Descriptions**

Low dropout linear regulator in a SOT-89 Plastic Package .

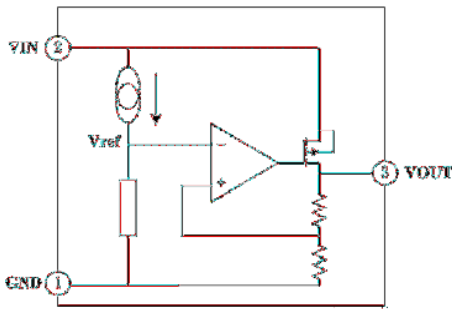
**/ Features**

Low power consumption,Low voltage drop,Small temperature drift coefficient,High input voltage up to 30V,The static current 2.5mA,The output voltage accuracy ±0.1%.HF Product.

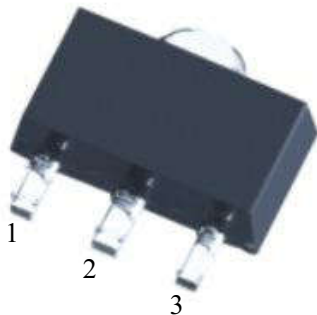
**/ Applications**

For use in power equipment,Communication equipment,Audio and video equipment.

**/ Equivalent Circuit**



**/ Pinning**



PIN1y GND      PIN 2y VIN      PIN 3y VOUT

**/ Marking**

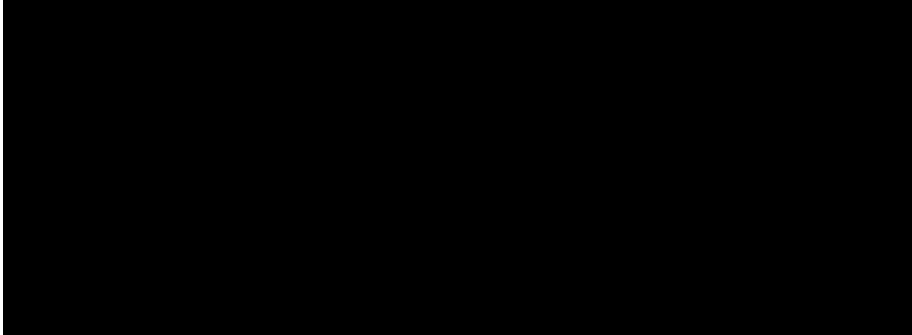
See Marking Instructions.

	@ A Parameter	— Symbol	A™ Rating	Š › Unit
Worki				



**/ Typical Application Circuit**

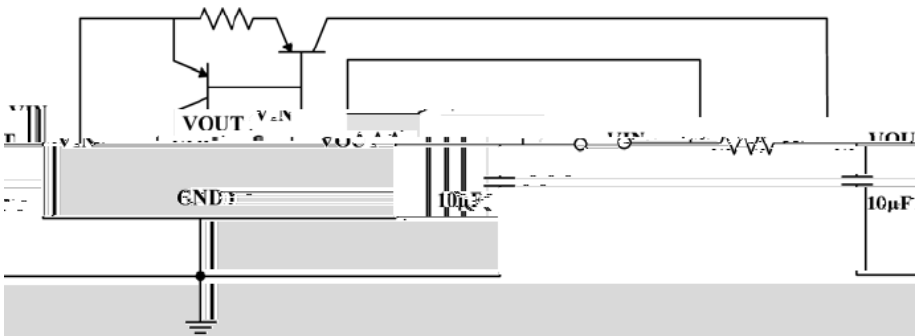
Y ~ P ~ / Basic Application



J K « L u L MS B f / High Output Current Voltage Regulator

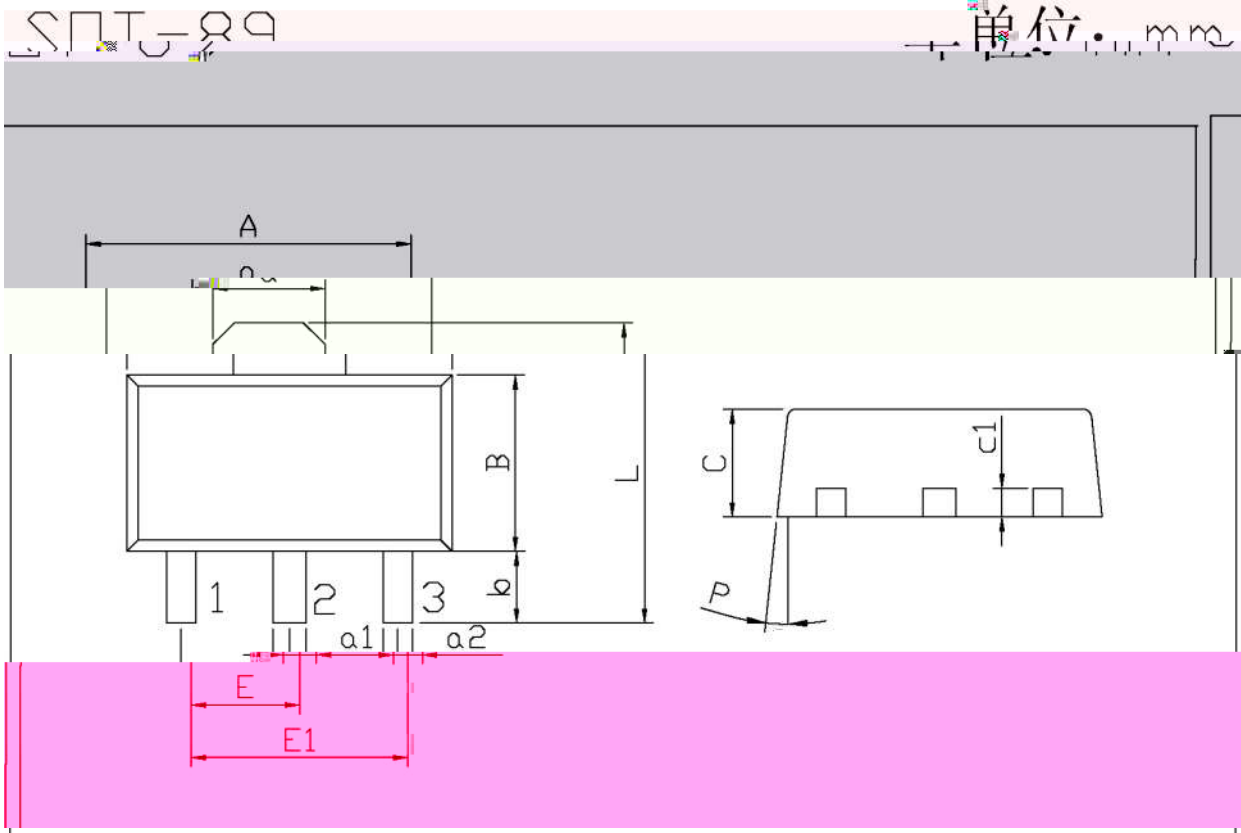


à á â ã P ~ / Short-Circuit Protection



**BRCO7550T**  
Rev.F Apr.-2021

**/ Package Dimensions**



Symbol	Dimensions In Millimeters		Symbol	Dimensions In Millimeters	
	Min	Max		Min	Max
A	4.4	4.7	a1	0.36	0.56

a	1.45	1.65	c1	0.35	0.50
b	1.40	1.60	e	6'	
E1	2.80	3.20			
φ	0.80	1.20			

**/ Marking Instructions**

" • y

7550y U Ô ~ à fl

ay U ç { è ~ à fl = é ç { è ~ ê ë g

Note:U

**BRCO7550T**