

22.

--	--	--	--	--

## / Descriptions

N MOS

## / Features

$V_{DS} (V) = 30V$

$I_D = 67A (V_{GS} = \pm 20V)$

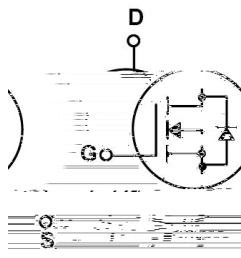
$R_{DS(ON)}@ 10V \ 6m\Omega$

HF Product.

## / Applications

DC/DC

## / Equivalent Circuit



## / Pinning

## / Marking



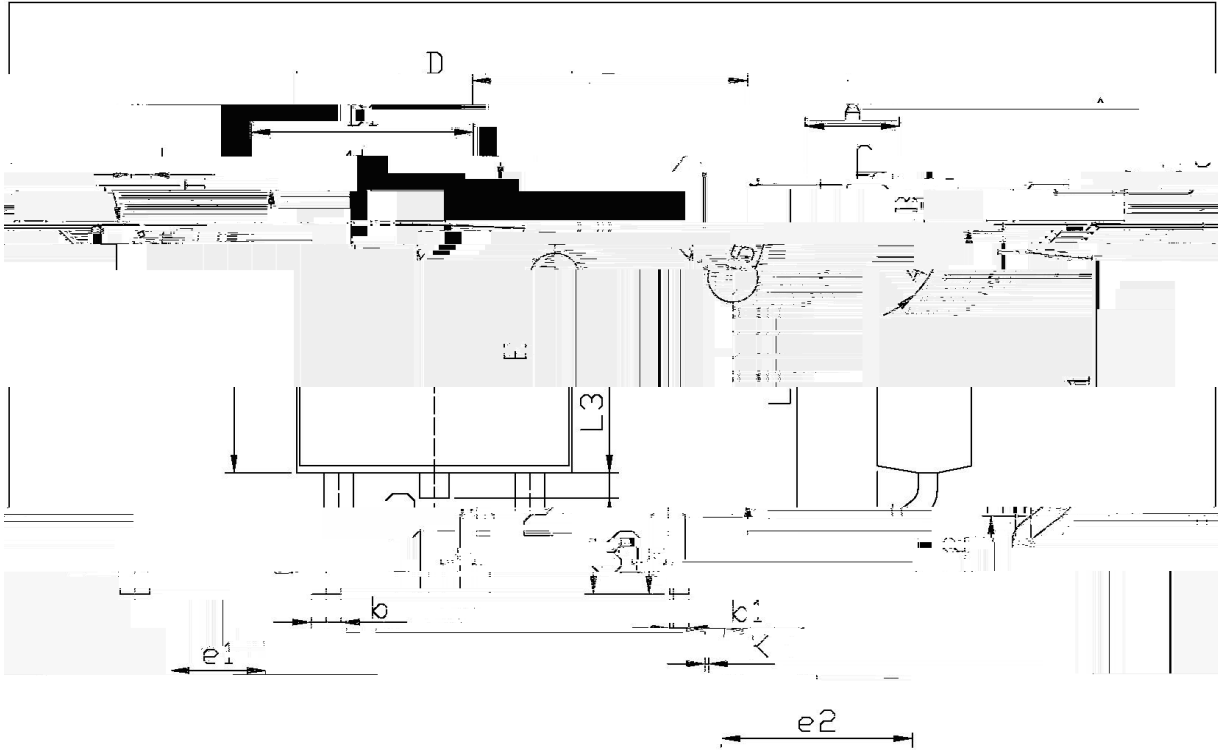
	$i_c$		
	$i_c$		
			$^{\circ}\text{C}$
			$i_c$

**BRCS060N03D**

Tr 00.564 0 000.564 0 015.3415



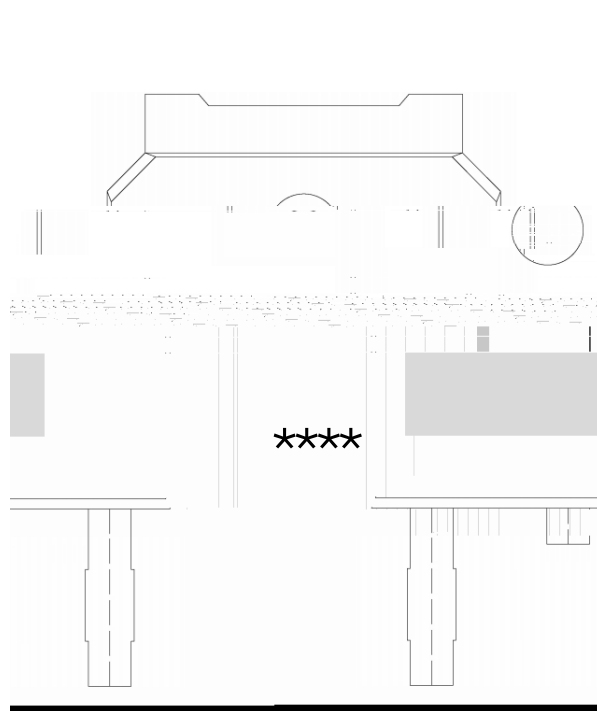
/ Package Dimensions



Unit: mm

Symbol	Min	Max	Symbol	Min	Max
A	2.20	2.40	D	0.95	1.25
B	9.85	10.35	E	0.45	0.55
C	0.60	0.90	L3	6.45	6.75
D	0.95	1.25	e1	5.50	5.50
E	0.45	0.55	b	0.90	0.90
L3	6.45	6.75	b'	0.90	0.90
e1	5.50	5.50	e2	2.24	2.24
b	0.90	0.90			
b'	0.90	0.90			
e2	2.24	2.24			

**/ Marking Instructions**



060N03

\*\*\*\*

( ) / Temperature Profile for IR Reflow Soldering(Pb-Free)


± ± ± ±

/ Resistance to Soldering Heat Test Conditions

± ± °C

/ Packaging SPEC.

						Reel	Inner Box	Outer Box
	Units/Reel 只/卷盘	Reels/Inner Box 卷盘/盒	Units/Inner Box 只/盒	Inner Boxes/Outer Box 盒/箱	Units/Outer Box 只/箱			
TO-252	2,500	2	5,000	6	30,000	13" x16	360x360x50	380x335x366

						Tube	Inner Box	Outer Box
	Units/Tube 只/套管	Tubes/Inner Box 套管/盒	Units/Inner Box 只/盒	Inner Boxes/Outer Box 盒/箱	Units/Outer Box 只/箱			
TO-251/252	75	28	2,100	6	18,000	526x205x5.25	555x164x50	575x290x180