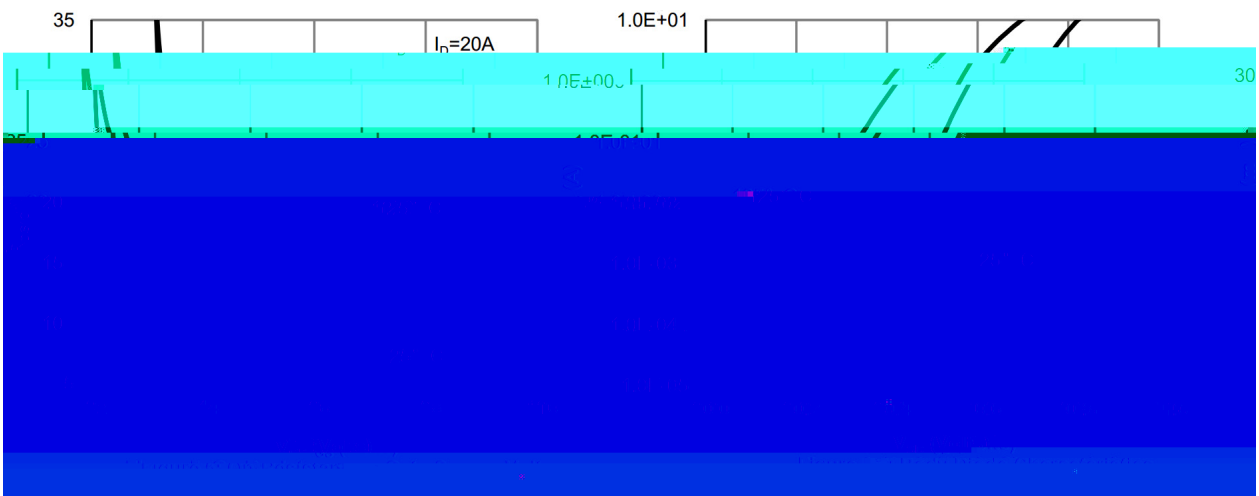
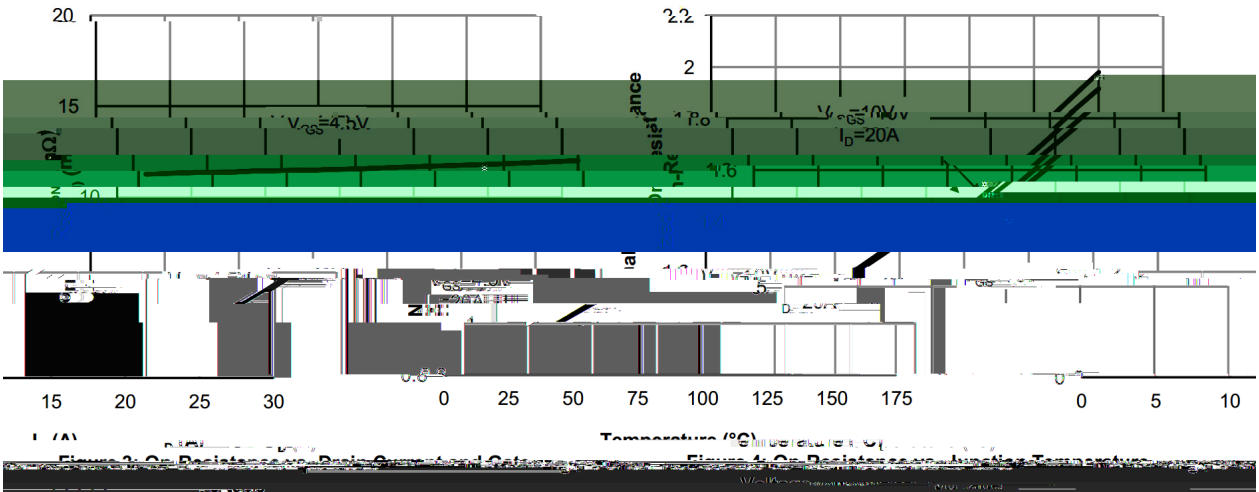


Parameter	Symbol	Rating	Unit
Drain-Source Voltage	V_{DSS}	100	V
Drain Current	$I_D(T_c=25^\circ C)$	65	A
Pulsed Drain Current	I_{DM}	168	A
Gate-Source Voltage	V_{GS}	f 20	V

@ f Parameter	... Z Symbol	y i Ú ^ Test Conditions	Â 4 › Min	Á ° › Typ	Â Ý › Max	% y Unit
Turn-On Delay Time	t _{d(on)}	V _{GS} =10V V _{DS} =50V R _L =2.5 R _{GEN} =3		8.7		ns
Turn-On Rise Time	t _r			3.5		
Turn-Off Delay Time	t _{d(off)}			25		
Turn-Off Fall Time						

Electrical Characteristic Curve



Electrical Characteristic Curve

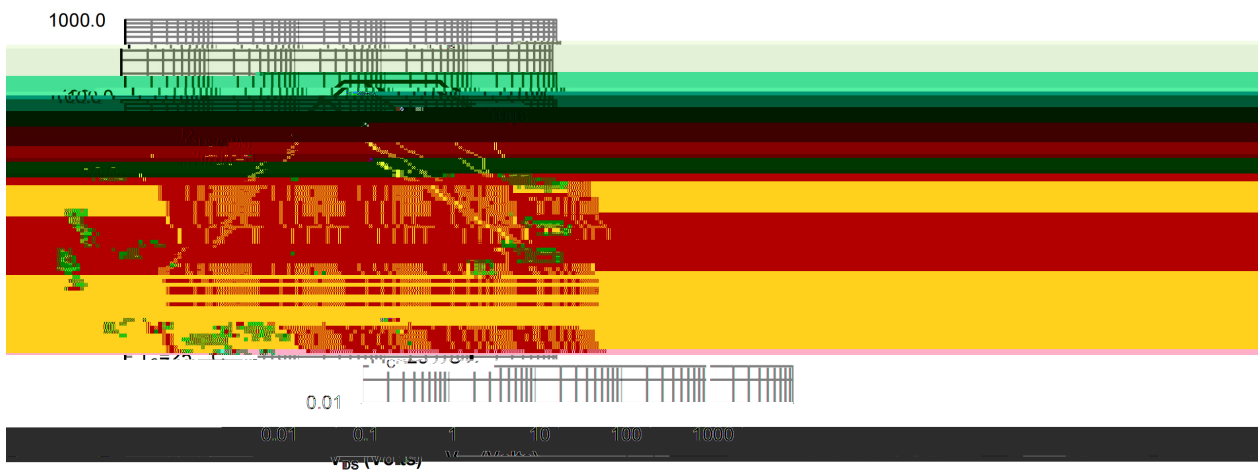
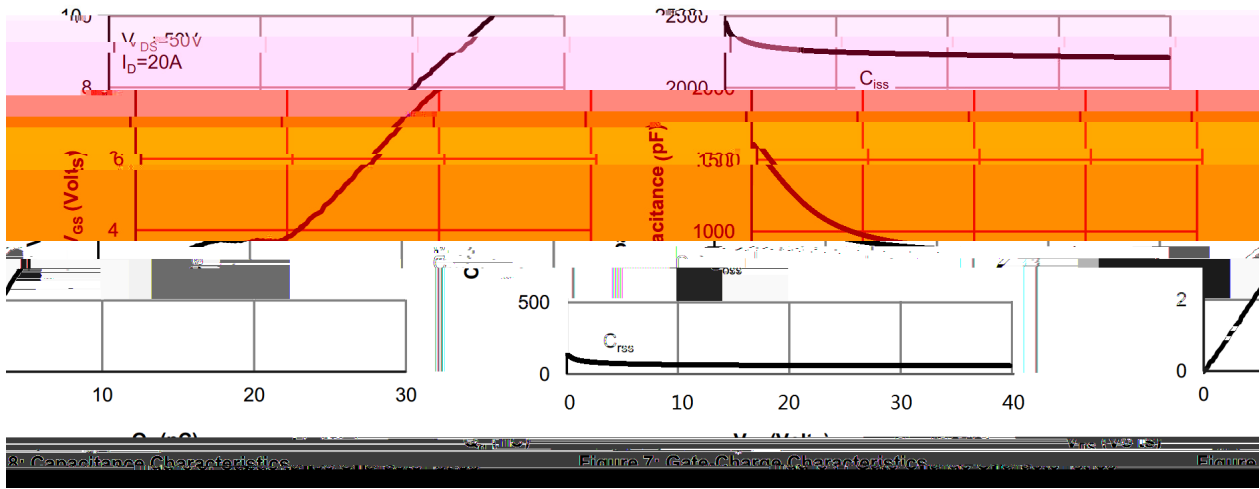


Figure 9: Maximum Forward Biased Safe Operating Area

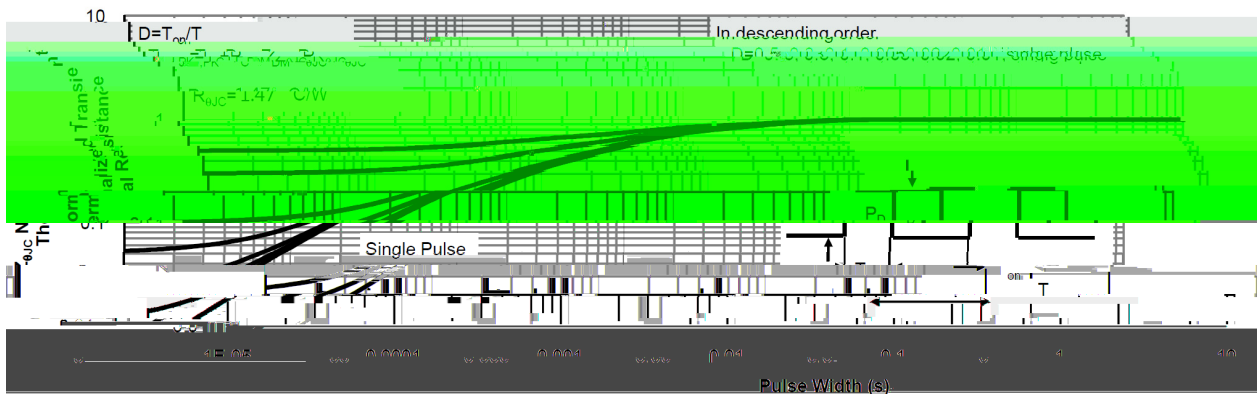
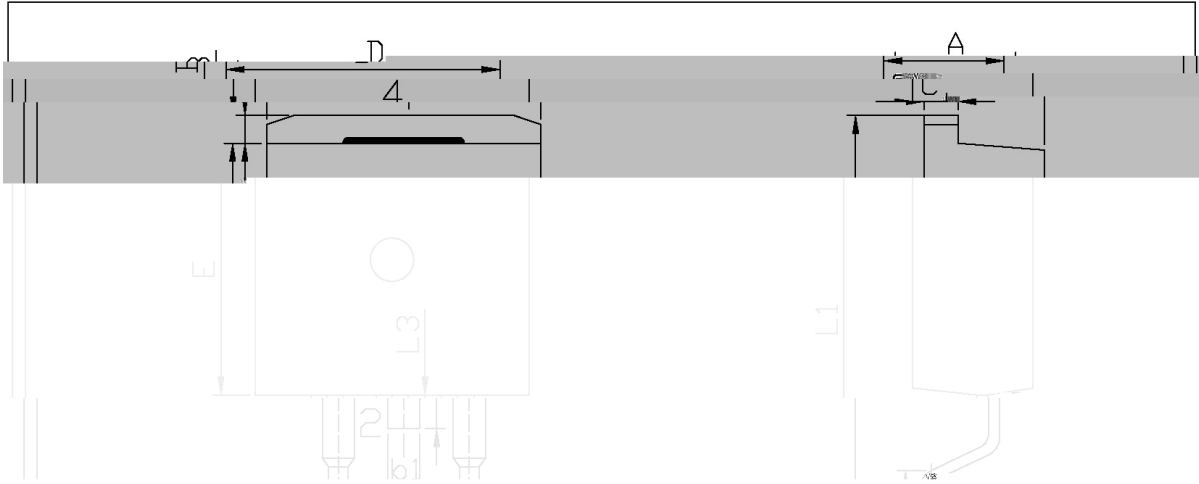


Figure 10: Normalized Maximum Transient Thermal Impedance

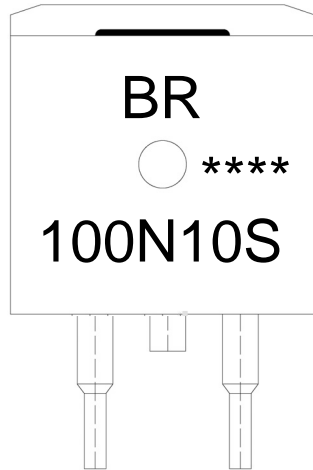
∅ □ =) ∅ / Package Dimensions



Symbol	Max	Min	Max	Min
A	9.40	4.30	4.70	9.00
B	2.74	1.00	1.40	2.24
C	1.60	1.20	1.40	1.20
D	9.80	10.20		
L1	16.00	1.15	1.35	1.50
L2	2.84	0.10	0.60	2.24
L3	1.60	1.20	1.40	1.20
b1		1.15	1.35	1.50
e1		2.24	2.24	2.24



, M y f / Marking Instructions



^a ç y
(8 y , [W A
4 9 y ° Z W A
y ÿ D Z W A k š ÿ D Z J

Note:

BR: Company Code

100N10S: Product Type Code

****: Lot No. Code, code change with Lot No



šWD t...•Žç (x/) / :KSVKXGZ[XK 6XULORK LUX /8 8KLRU] 9URJKXOTM 6

ª ç y

1o• Ä ½ “ † 150 ½180 - k ž • 60 ½90sec;

2o• Q › “ † 245 r5 - k ž • 4 Ò 5 r0.5sec;

3o•D N ò i Ò 0 , † 2 ½10 - /sec.

Note:

1.Preheating:150~180 - , Time:60~90sec.

2.Peak Temp.:245 r5 - , Duration:5 r0.5sec.

3. Cooling Speed: 2~10 - /sec.

ÂD /Cã p ¯ »] / Resistance to Soldering Heat Test Conditions

605 r5 - (/ -5.7(Park) 5.1266(SBP) 5.0116(Tc) 4.7/1 BTx03.4485 32.3713 TD .0004 Tc -35.6 5309:602
† † †