

# BRCS12N65BD

Rev.A Aug.-2018

## 5 é / Descriptions

TO-263 .> // x N ?ú 3 MOS « | • 'ož N-CHANNEL MOSFET in a TO-263 Plastic Package.

## α a / Features

z õ > z F Ø • ¼ , † ½ož

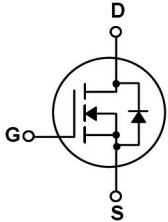
Low gate charge, Low Crss , Fast switching.

## Đ ÷ / Applications

9 ä È • ¼ › k ÿ s v ~ k ; 6 9 › ož

High efficiency switch mode power supplies, Electronic lamp ballasts based on half bridge, UPS .

## Ã W ] Ô . / Equivalent Circuit



## • Û - æ / Pinning



PIN1 y G

PIN 2o•4 y D

PIN 3 y S

## Z Ü B , M V / h<sub>FE</sub> Classifications & Marking

• - ~ a ç ož See Marking Instructions.

@  $f$   
Parameter

... Z  
Symbol

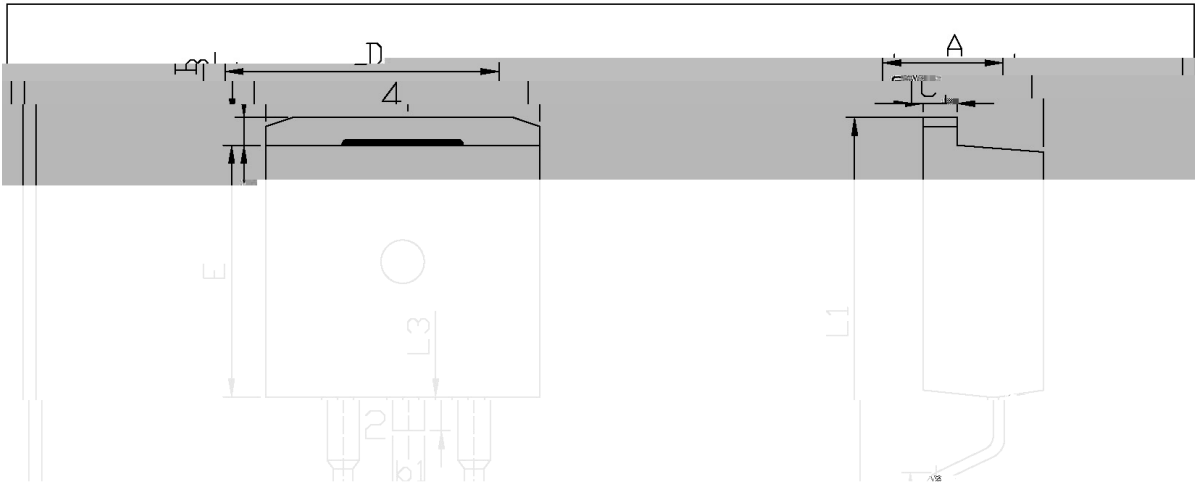
$f$  ›  
Rating

% y

**BRCS12N65BD**  
Rev.A Aug.-2018

**DATA SHEET**

∅ □ = ) ∅ / Package Dimensions



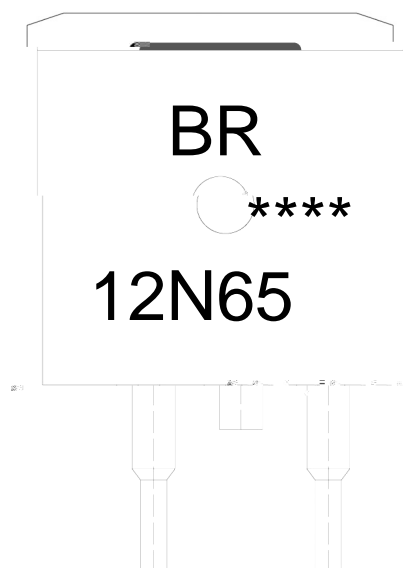
Max		Min		Max		Min	
15.00	16.00	b1	1.15	1.35	L1		
2.24	2.84	b2	0.40	0.80	L2		
1.20	1.60	C	1.20	1.40	L3		
		D	9.80	10.20			

T0-263

# B RCS12N65BD

Rev.A Aug.-2018

## , M y f / Marking Instructions



<sup>a</sup> ç y

( 8 y , [ W A

4 y ° Z W A

y ÿ D Z W A k š ÿ D Z J ož

Note:

BR: Company Code

12N65: Product Type.

\*\*\*\*: Lot No. Code, code change with Lot No.

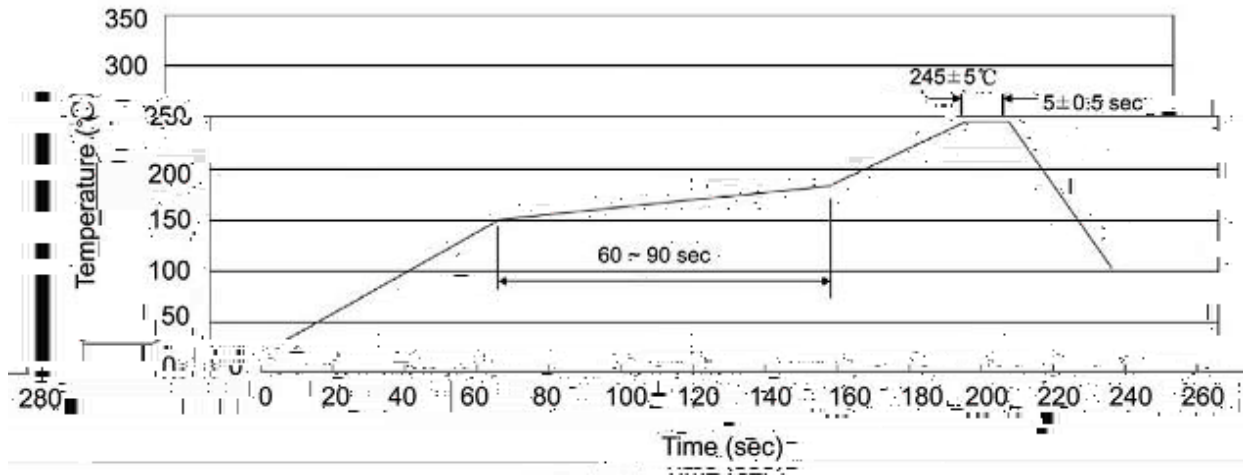
# BRCS12N65BD

Rev.A Aug.-2018



DATA SHEET

šWD t...•Žç (x/ ) / :KSVKXGZ[XK 6XULORK LUX /8 8KLRU] 9URJKXOTM 6



a ç y

- 1o• Ä ½ " † 150 ½180 - k ž • 60 ½90sec;
- 2o• Q › " † 245 r5 - k ž • 4 Ò 5 r0.5sec;
- 3o•D N ò i Ò 0 , † 2 ½10 - /sec.

Note:

- 1.Preheating:150~180 - , Time:60~90sec.
- 2.Peak Temp.:245 r5 - , Duration:5 r0.5sec.
- 3. Cooling Speed: 2~10 - /sec.

## ÂD /Cã p ~ » ] / Resistance to Soldering Heat Test Conditions

" † y 260 r5 - ž • y 10 r1 sec. Temp.:260±5 Time:10±1 sec

## G P á / Packaging SPEC.

2 & x / REEL

Package Type ß m ù	Units g m ô h					Dimension g m d Ê (unit ! mm³)		
	Units/Reel /   i	Reels/Inner Box   i / ç	Units/Inner Box / ç	Inner Boxes/Outer Box ç / ±	Units/Outer Box / ±	Reel	Inner Boxç	Outer Boxž
TO-263	800	1	800	5	4,000	13s x24	360x360x50	385x257x392

ì' x / TUBE

Package Type ß m ù	Units g m ô h					Dimension g m d Ê (unit ! mm³)		
	Units/Tube / Š •	Tubes/Inner Box Š • / ç	Units/Inner Box / ç	Inner Boxes/Outer Box ç / ±	Units/Outer Box / ±	Tube Š •	Inner Boxç	Outer Boxž
TO-263	50	20	1,000	5	5,000	532x33x7.0	555x164x50	575x290x180

## „ Ð y f / Notices