

# BRCS3139WB

Rev.A Oct.-2025

## / Descriptions

SOT-523 P MOS  
P-CHANNEL MOSFET in a SOT-523 Plastic Package.

## / Features

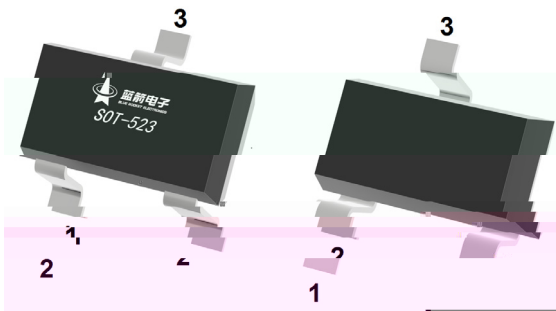
## / Applications

Load Switching, Low Current Inverters, Low Current DC/DC Converters.

## / Equivalent Circuit



## / Pinning



PIN1 G

PIN 2 S

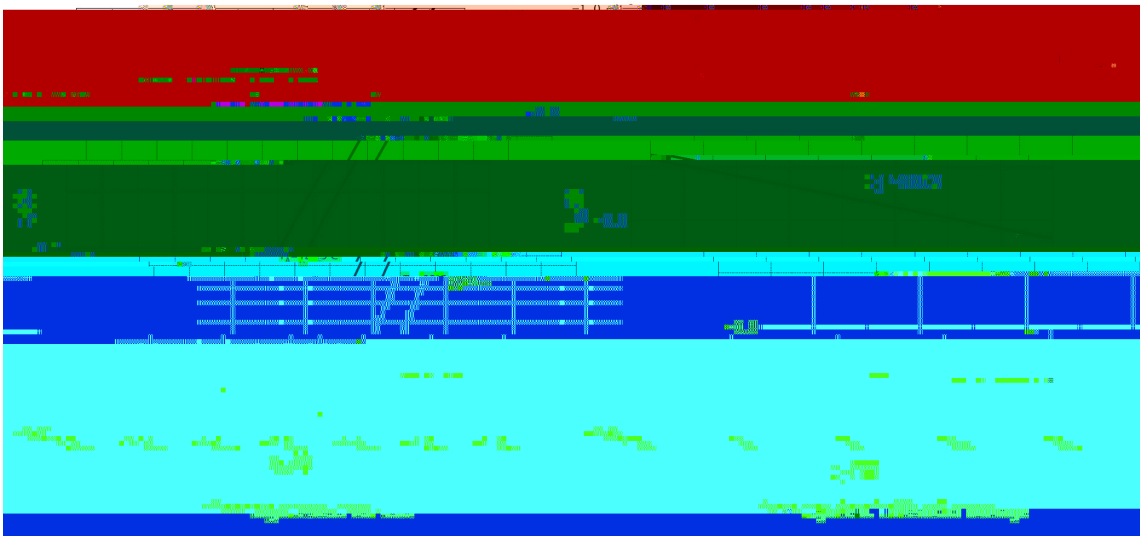
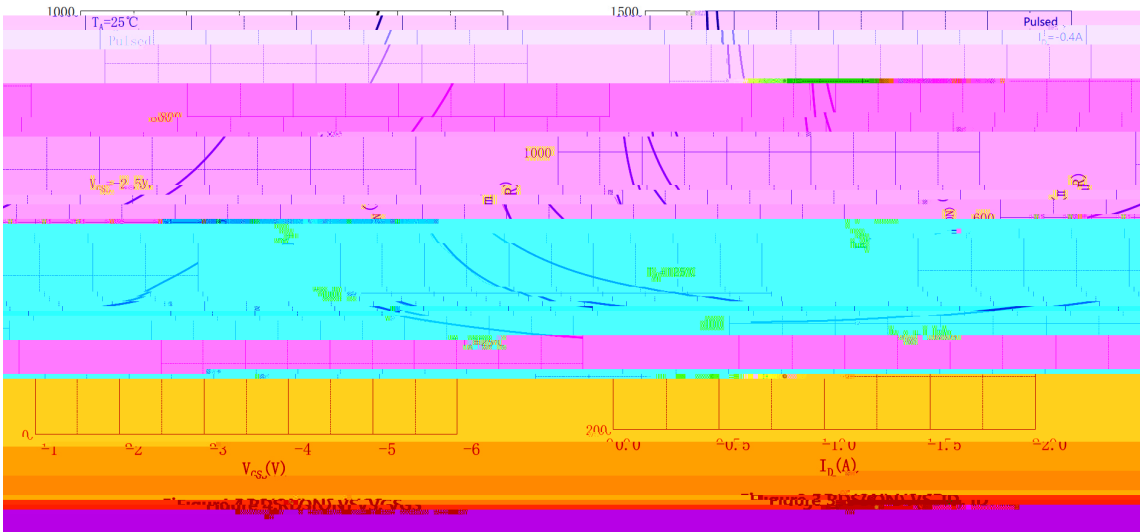
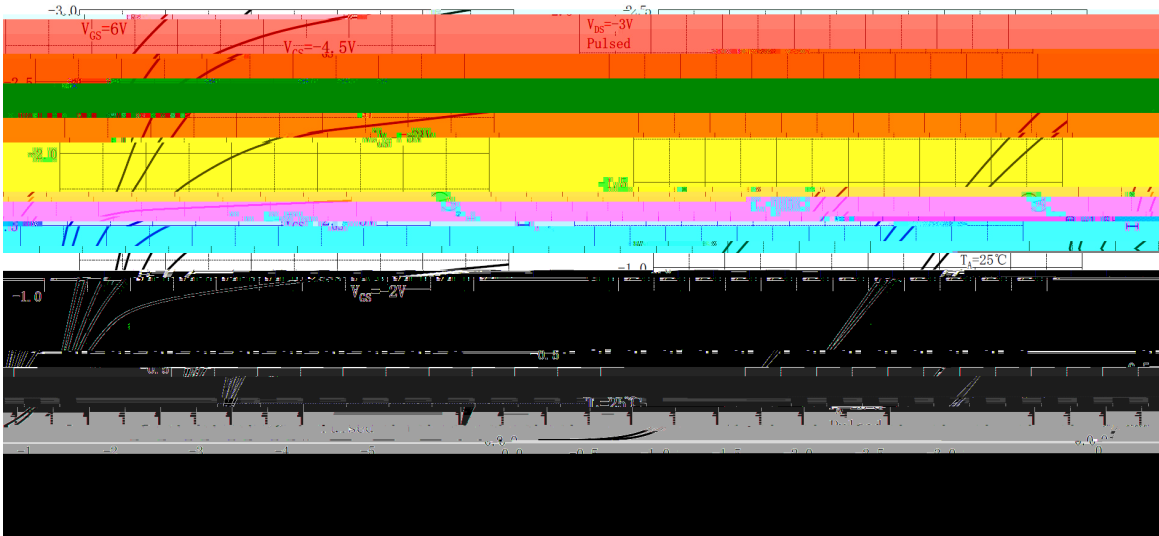
PIN 3 D

## / Marking

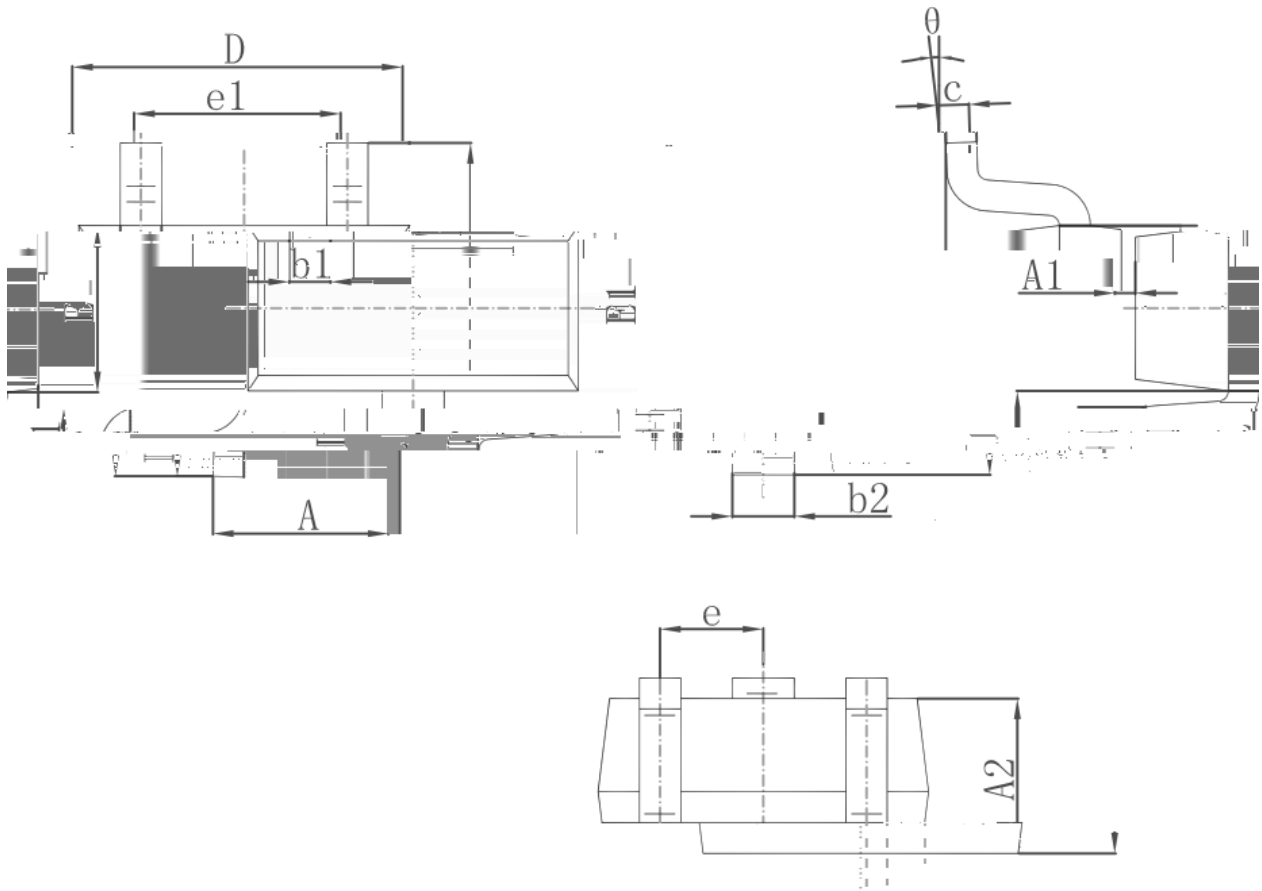
See Marking Instructions.



**/ Electrical Characteristic Curve**

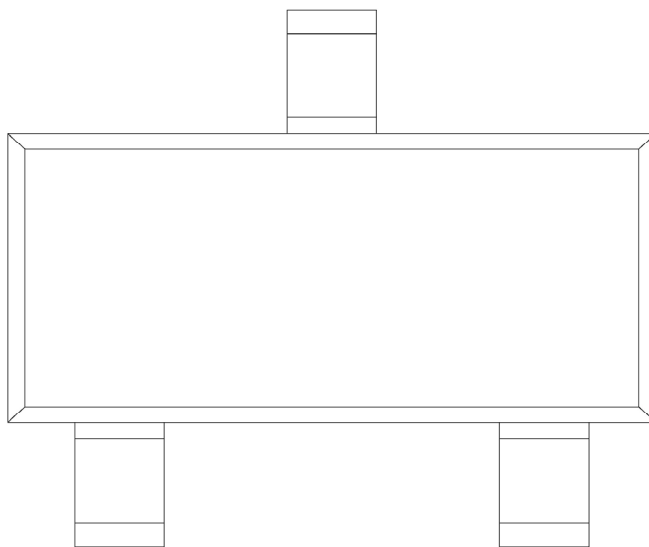


**/ Package Dimensions**



Dimensions In Inches		Symbol	Dimensions In Millimeters	
Min.	Max.		Min.	Max.
0.028	0.035	A	0.700	0.900
0.000	0.000	A1	0.800	0.020
0.031	0.000	A2	0.700	0.020
0.010	0.000	b1	0.150	0.000
0.014	0.000	b2	0.250	0.000
0.200	0.000	c	0.000	0.100
0.100	0.000	D	0.700	0.900
0.069	0.035	e	1.450	1.750
0.043	0.000	e1	0.500 TYP.	0.020 TYP.
0.018	0.000	theta	0.900	1.100
8°	0°		0.400 REF.	0.016 REF.
			0.260	0.460
			0°	0°

**/ Marking Instructions**



39K

**( ) / Temperature Profile for IR Reflow Soldering(Pb-Free)**


**Note:**

- |   |     |     |    |          |   |
|---|-----|-----|----|----------|---|
| 1 | 150 | 180 | 60 | 90sec;   | 1.Preheating:150~180 , Time:60~90sec.   |
| 2 | 245 | 5   | 5  | 0.5sec;  | 2.Peak Temp.:245 5 , Duration:5 0.5sec. |
| 3 |     |     | 2  | 10 /sec. | 3. Cooling Speed: 2~10 /sec.            |

**/ Resistance to Soldering Heat Test Conditions**

260	5	10	1 sec.	Temp.:260±5	Time:10±1 sec
-----	---	----	--------	-------------	---------------

**/ Packaging SPEC.**

/ REEL