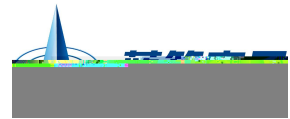


BRCS40P03DP

Rev.C Mar.-2021

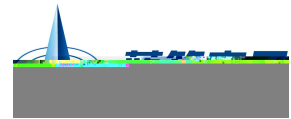


DATA SHEET

A	19-05-20				
B	2019-6-1 ⁴	1			
C	2021-3-1 ⁴	ALL	ZM18503PA		

BRCS40P03DP

Rev.C Mar.-2021



DATA SHEET

/ Descriptions

P TO-252

P-CHANNEL MOSFET in a TO-252 Plastic Package.

/ Features

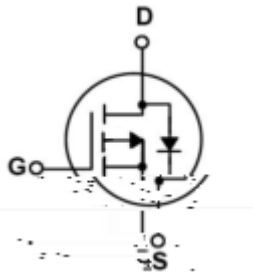
$R_{DS(on)}$

Low $R_{DS(on)}$, High Current Capability. Halogen-free Product.

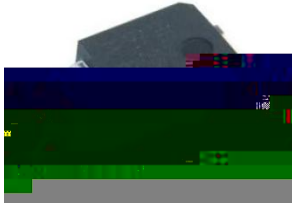
/ Applications

AC-in load switch, Battery protection charge/discharge.

/ Equivalent Circuit



/ Pinning



PIN1 G

PIN 2 D

PIN 3 S

PIN 4 D

/ h_{FE} Classifications & Marking

See Marking Instructions.

BRCS40P03DP



DATA SHEET

Test Conditions	Min	Typ	Max	Unit
$V_{DS}=-0V$ $V_{GS}=0V$ $f=1.0MHz$		2530		pF
		790		
		450		
$V_{GS}=0V$ $V_{DS}=0V$ $f=1MHz$		8		
$V_{GS}=-10V$ $V_{DS}=-15V$ $I_D=-20A$		50	70	nC
		25	35	
		9		
		12		

BRCS40P03DP

Rev.C Mar.-2021

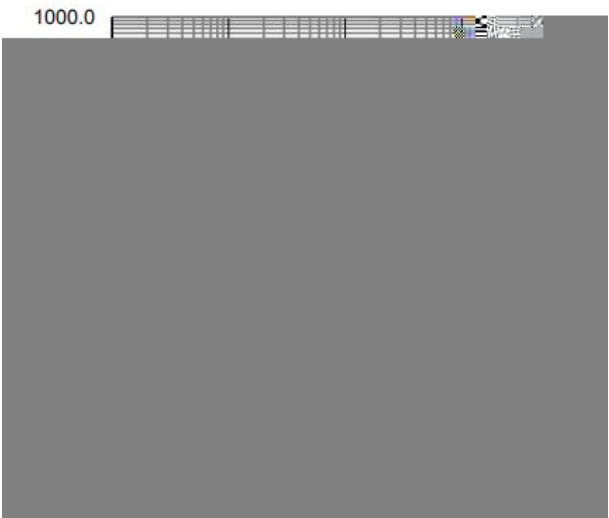
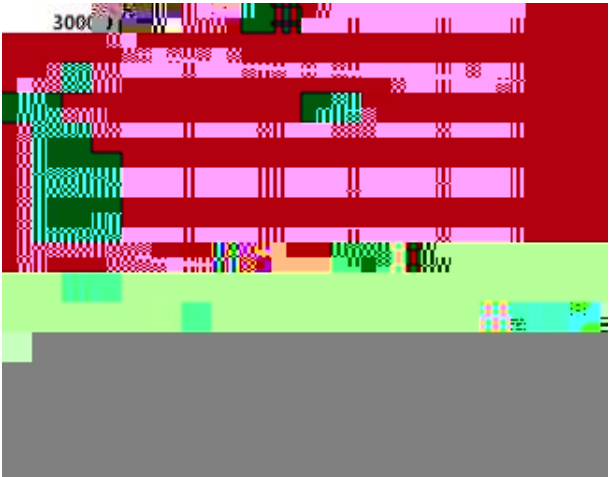
DATA SHEET

ht

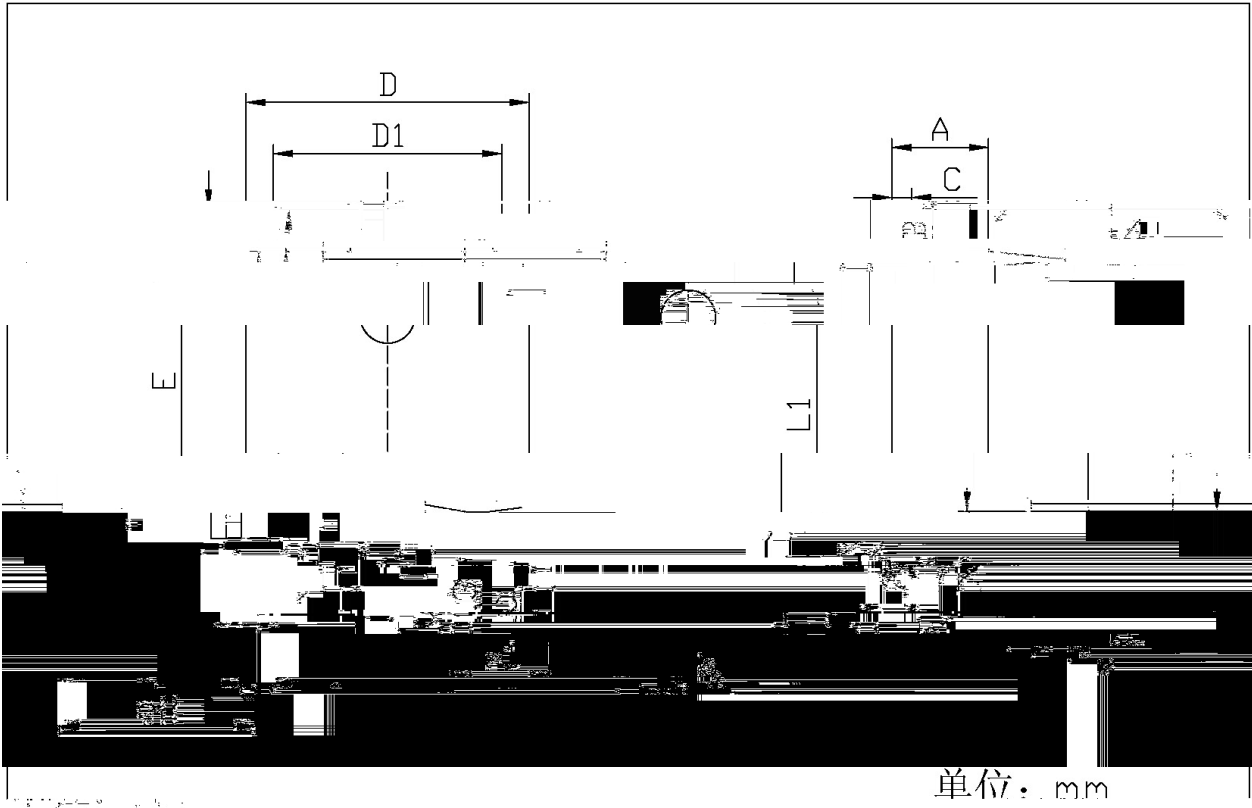
¢ -

hR

/ Electrical Characteristic Curve

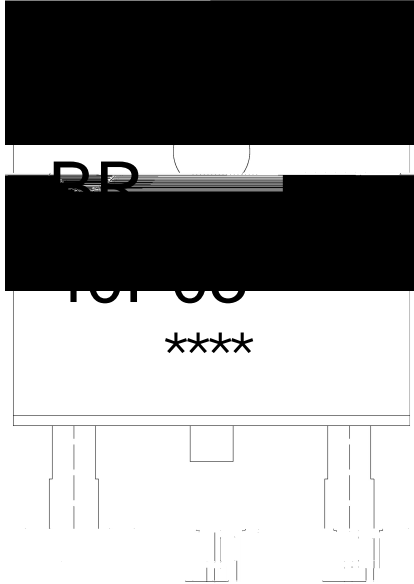


/ Package Dimensions



Symbol	Max	Min	Symbol	Max	Min
b	0.50	0.70	4	4.43	4.73
b1	0.25	0.55	5	9.45	9.95
0.55	L2	1.25	1.75	C	0.45
6.75	L3	0.60	0.80	D	6.45

/ Marking Instructions



BR

40P03

Note:

BR: Company Code

40P03: Product Type Code.

****: Lot No. Code, code change with Lot No.

