

BRC5700P10DP

Rev.C Aug.-2023

/ Descriptions

TO-252 P MOS
P-CHANNEL MOSFET in a TO-252 Plastic Package.

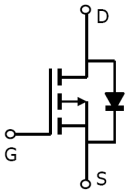
/ Features

$V_{DS}(V)=-100V$ $I_D=-22A$
 $R_{DS(ON)}@-10V<70m$ (Typ.67mR)
 $R_{DS(ON)}@-4.5V<85m$ (Typ.70mR)
HF Product.

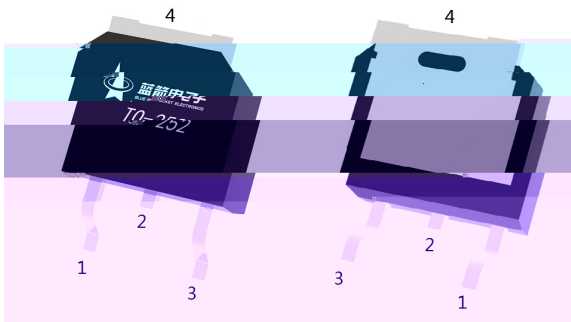
/ Applications

DC/DC
Power Management of Industrial DC/DC Converter.

/ Equivalent Circuit



/ Pinning



PIN1 G PIN 2 D PIN 3 S PIN 4 D

/ Marking

See Marking Instructions.

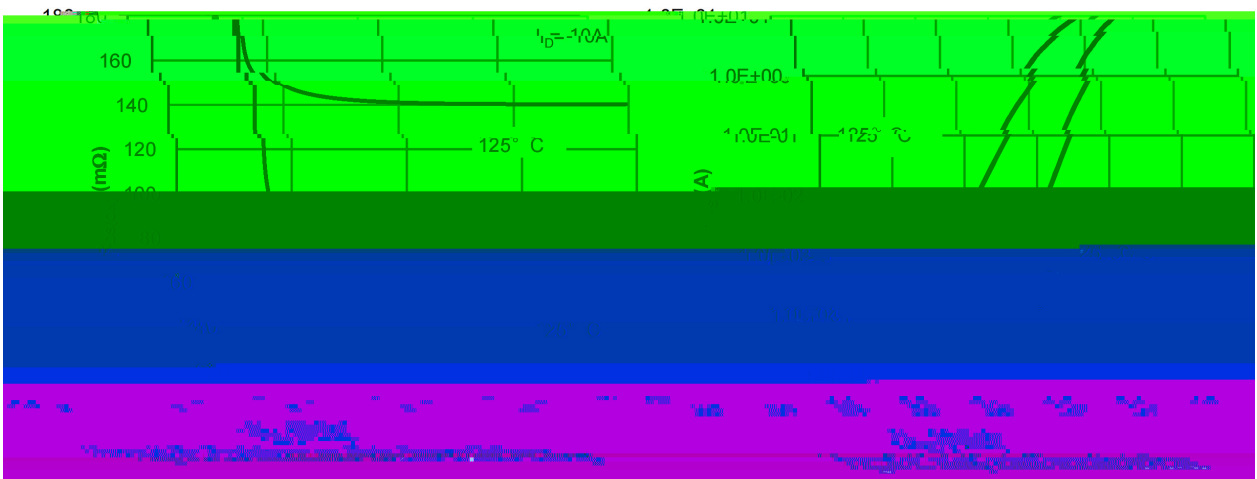
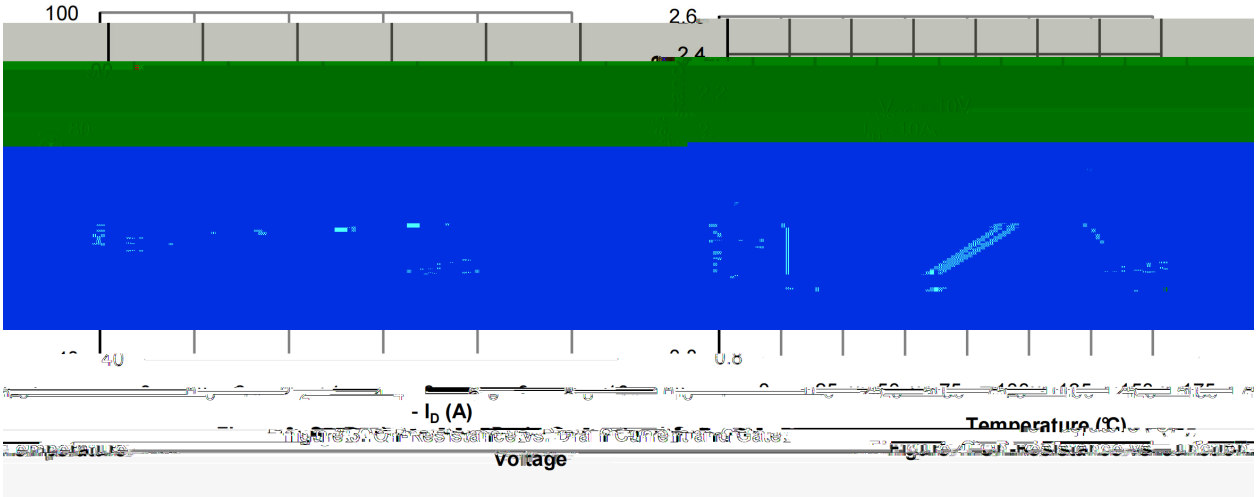
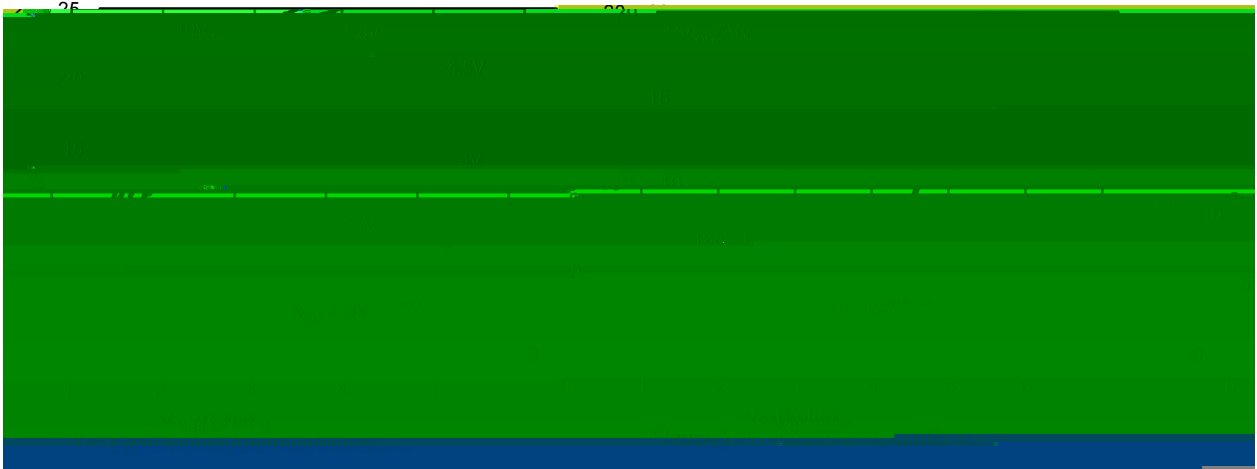


Parameter	Symbol	Rating	Unit
	V_{DS}	-100	V
Drain Current - Continuous	$I_D(T_c=25^\circ C)$	-22	A
Drain Current - Pulsed	I_{DM}	-66	A
Gate-Source Voltage	V_{GS}	+ 20	V
Power Dissipation	$P_D(T_c=25^\circ C)$	75	W
Single Pulse Avalanche Energy($I_L=0.5mA$)	E_{AS}	176.4	mJ
Avalanche Current			

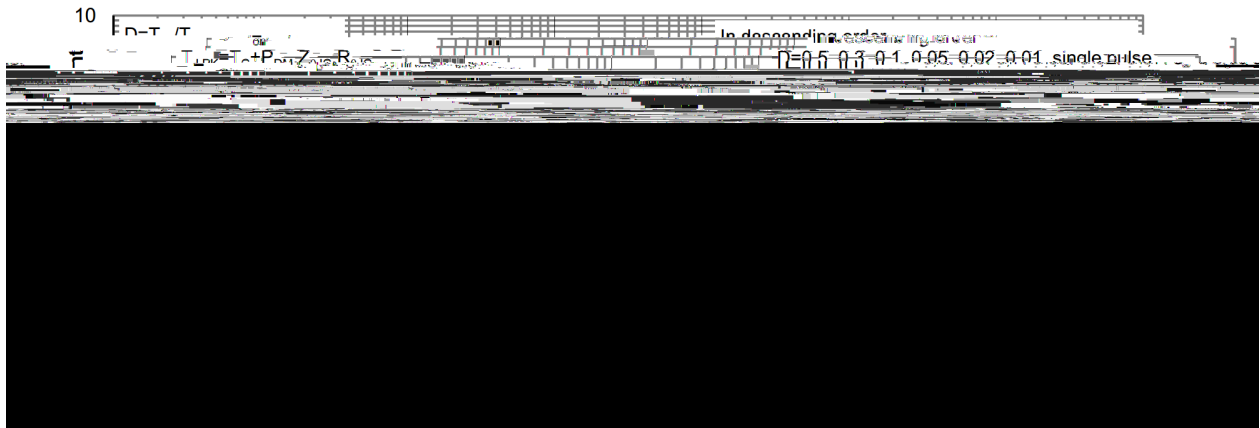
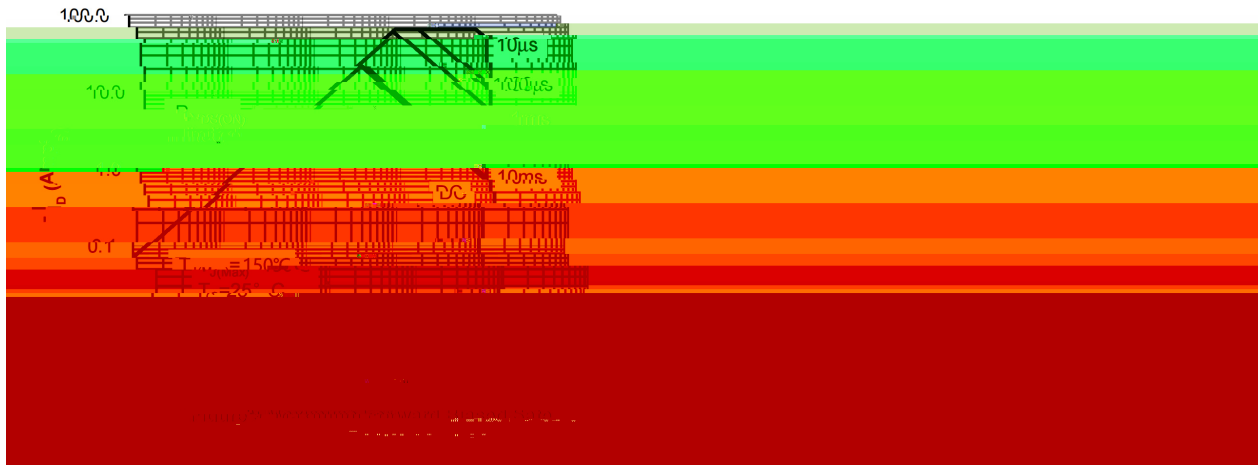
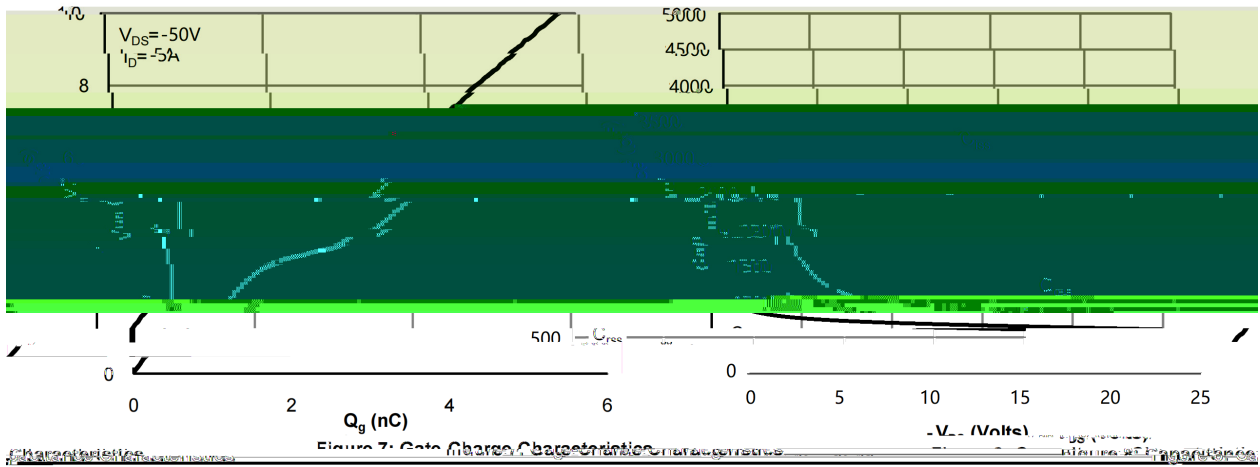
/ Electrical Characteristics(Ta=25)

Parameter	Symbol	Test Conditions	Min	Typ	Max	Unit
Turn-On Delay Time	$t_{d(on)}$	$V_{GS}=-10V$ $V_{DS}=-50V$ $R_L=10$ $R_{GEN}=3$		6		ns
Turn-On Rise Time	t_r			2.4		
Turn-Off Delay Time	$t_{d(off)}$			19		
Turn-Off Fall Time	t_f			2.6		

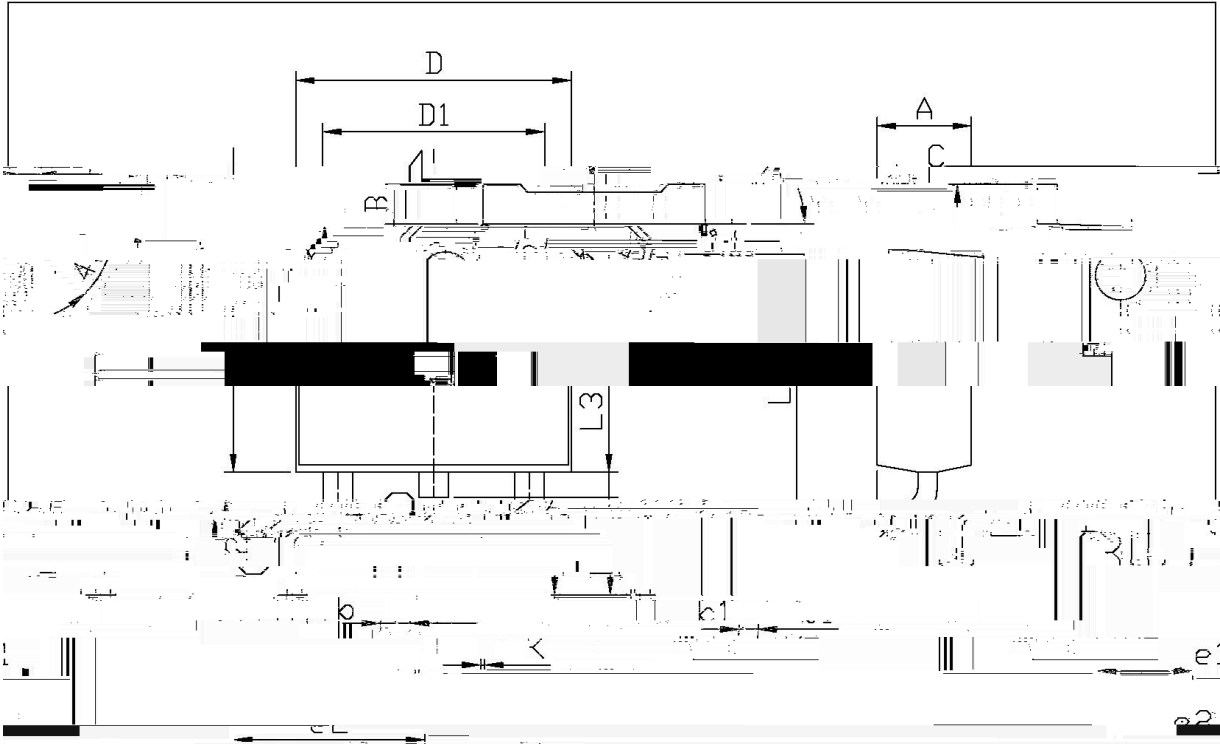
/ Electrical Characteristic Curve



/ Electrical Characteristic Curve



/ Package Dimensions



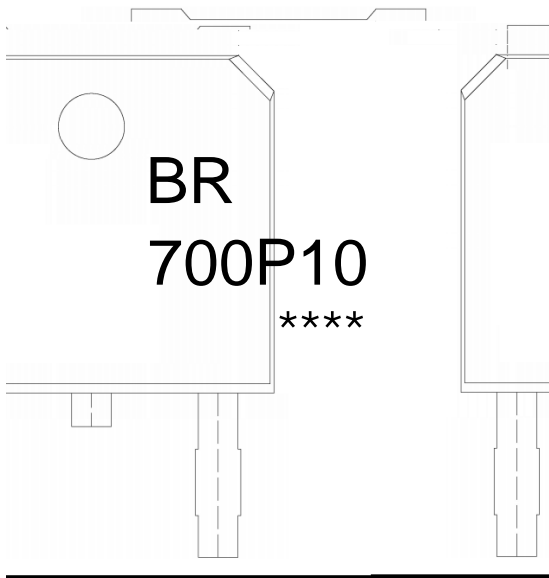
单位: mm

Dimensions in Millimeters		Dimensions in Millimeters	
Min	Max	Min	Max
2.24	2.34	B	0.95
4.13	4.72	b	0.70
0.35	0.45	b1	0.85
6.45	6.75	e1	0.50
D1	5.10	e2	0.10

T0-252



/ Marking Instructions



BR

700P10

Note:

BR: Company Code

700P10: Product Type

****: Lot No. Code, code change with Lot No

BRCS700P10DP