

BRD7N50F

Rev.A Jul.-2024

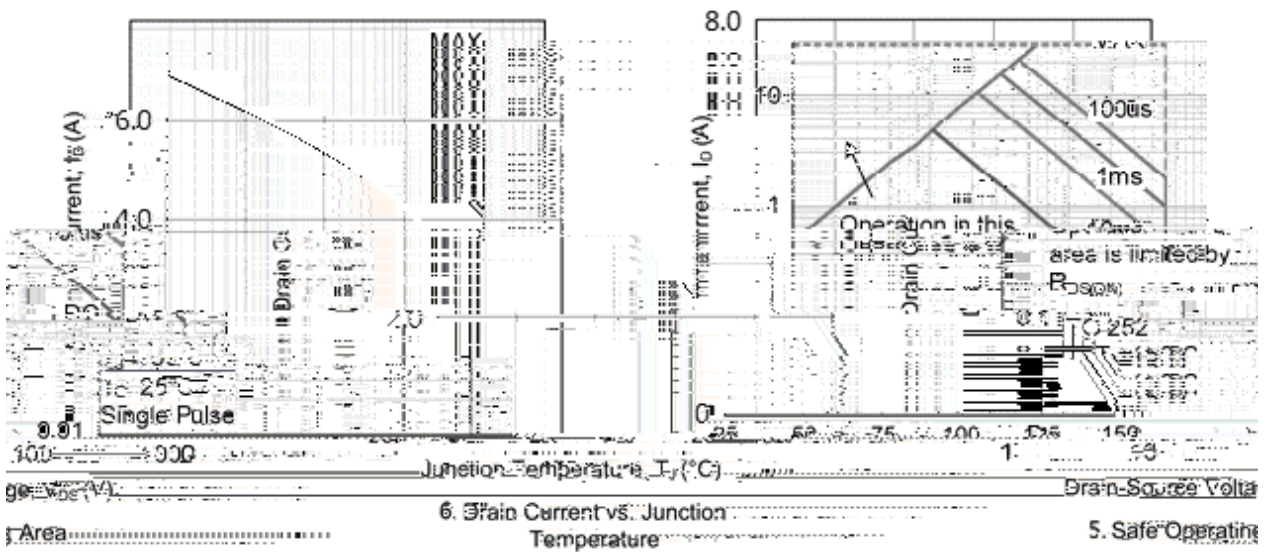
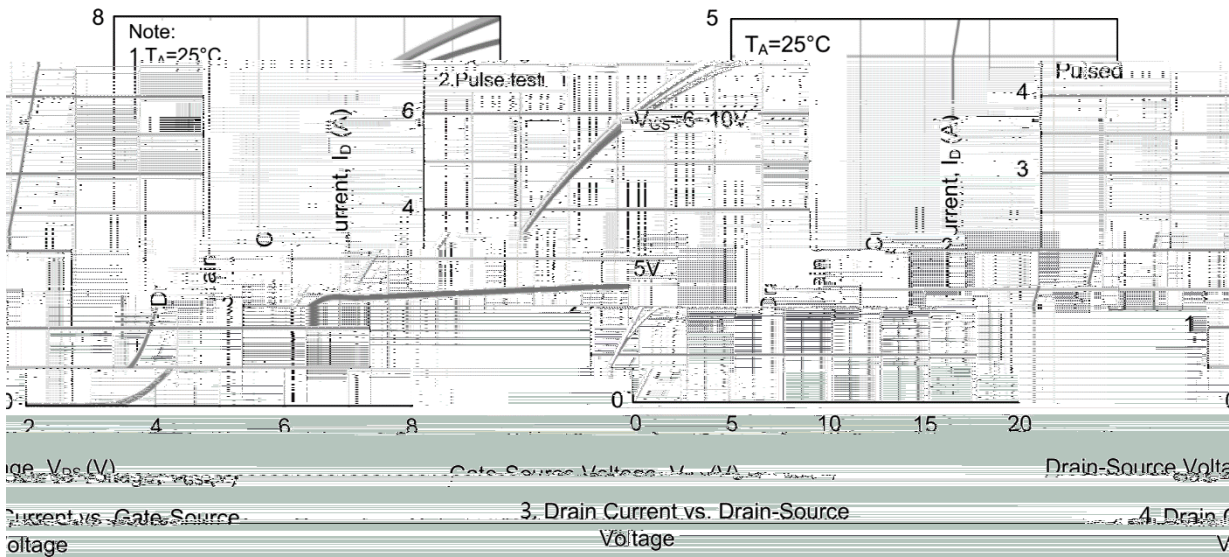
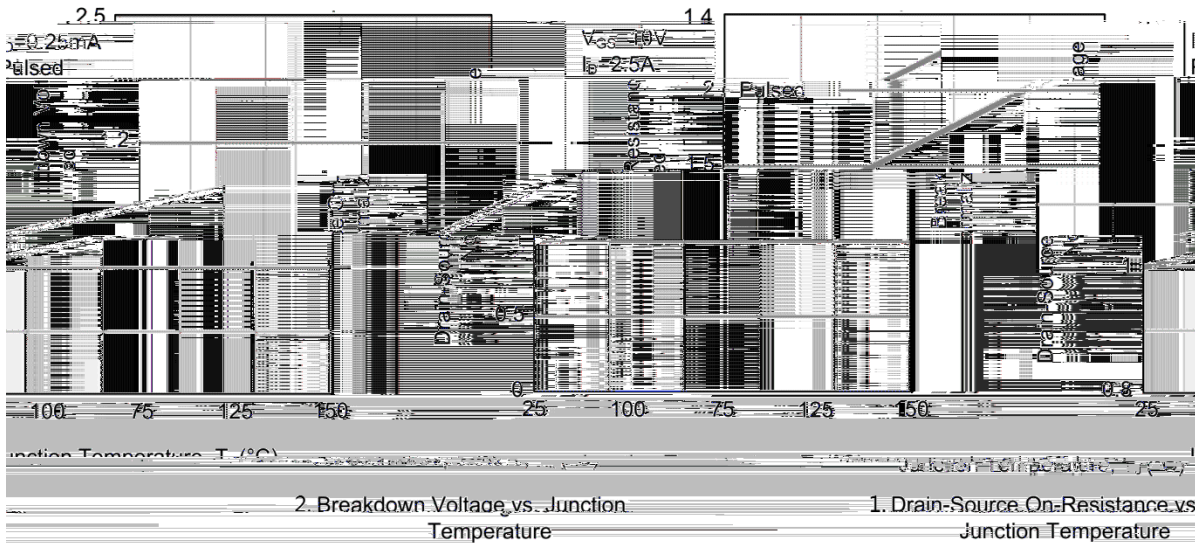
Parameter	Symbol	Rating	Unit
Drain-Source Voltage	V_{DSS}	500	V
Drain Current	$I_D(T_C=25^\circ\text{C})$	7	A
Drain Current - Pulsed	I_{DM}	28	A
Gate-Source Voltage	V_{GS}	± 30	V
Single Pulsed Avalanche Energy	E_{AS}	392	mJ
Avalanche Current	I_{AS}	8.4	A
Power Dissipation	$P_D(T_C=25^\circ\text{C})$	50	W
Operating and Storage Temperature Range	T_J, T_{STG}	-55 to 150	
Junction to Ambient	R_{JA}	110	$^\circ\text{C}/\text{W}$
Junction to Case	R_{JC}	2.5	$^\circ\text{C}/\text{W}$

Parameter	Symbol	Test Conditions	Min	Typ	Max	Unit
Drain-Source Breakdown Voltage	BV_{DSS}	$V_{GS}=0V$ $I_D=250\mu A$	500	554		V
Zero Gate Voltage Drain Current	I_{DSS}	$V_{DS}=500V$ $V_{GS}=0V$			1	μA
Gate-Body Leakage Current Forward	I_{GSS}	$V_{GS}=\pm 30V$ $V_{DS}=0V$			± 100	nA
Gate Threshold Voltage	$V_{GS(th)}$	$V_{DS}=V_{GS}$ $I_D=250\mu A$	2.0	2.9	4.0	V
Static Drain-Source On-Resistance	$R_{DS(on)}$	$V_{GS}=10V$ $I_D=3.0A$		1.2	1.5	
Drain-Source Diode Forward Voltage	V_{SD}	$V_{GS}=0V$ $I_S=1.0A$			1.4	V
Input Capacitance	C_{iss}	$V_{DS}=25V$ $V_{GS}=0V$ $f=1.0MHz$		570		

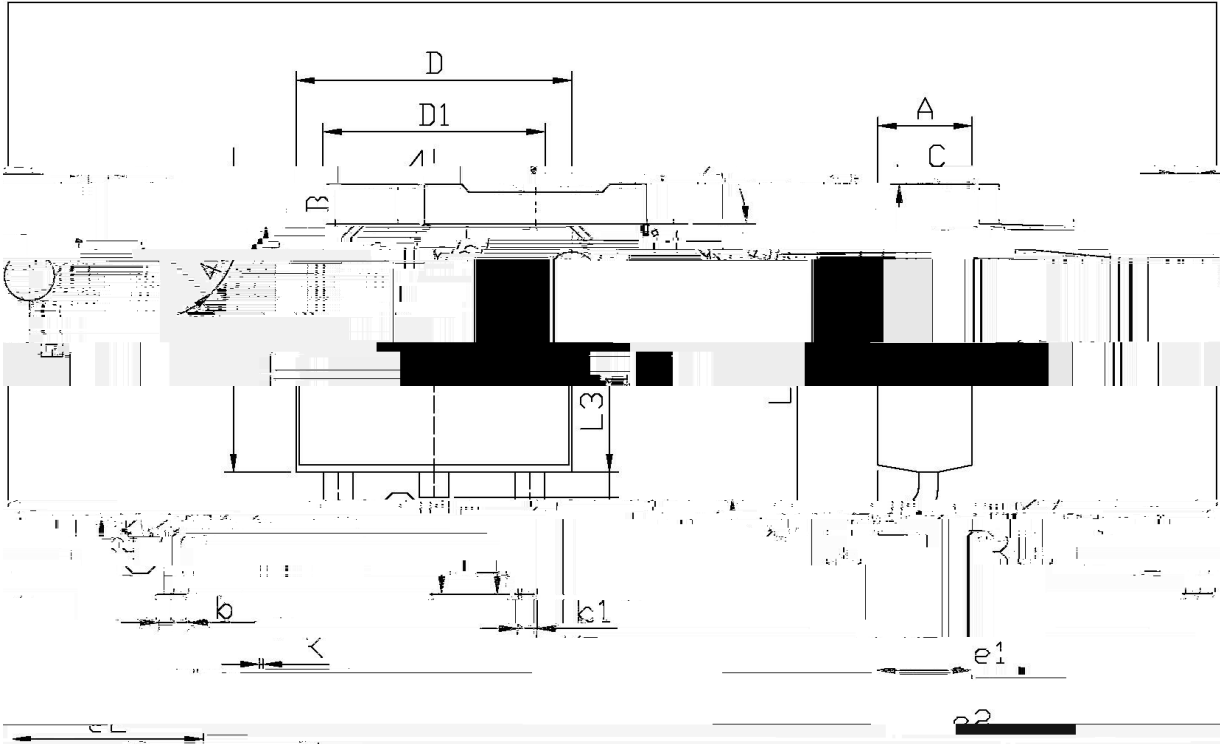
/ Electrical Characteristics(Ta=25)

Parameter	Symbol	Test Conditions	Min	Typ	Max	Unit
Turn-On Delay Time	$t_{d(on)}$	$V_{DD}=100V$ $I_D=7.0A$ $V_{GS}=10V$ $R_G=25$		11		ns
Turn-On Rise Time	t_r			17.5		
Turn-Off Delay Time	$t_{d(off)}$			53		
Turn-Off Fall Time	t_f			32		
Maximum Continuous Drain-Source Diode Forward Current	I_S				7	A
Maximum Pulsed Drain-Source Diode Forward Current	I_{SM}				28	A
Reverse Recovery Time	t_{rr}	$V_{GS}=0V$ $I_S=7.0A$ $dI_F/dt=100 A/\mu s$		90		ns
Reverse Recovery Charge	Q_{rr}			250		nC

/ Electrical Characteristic Curve



/ Package Dimensions



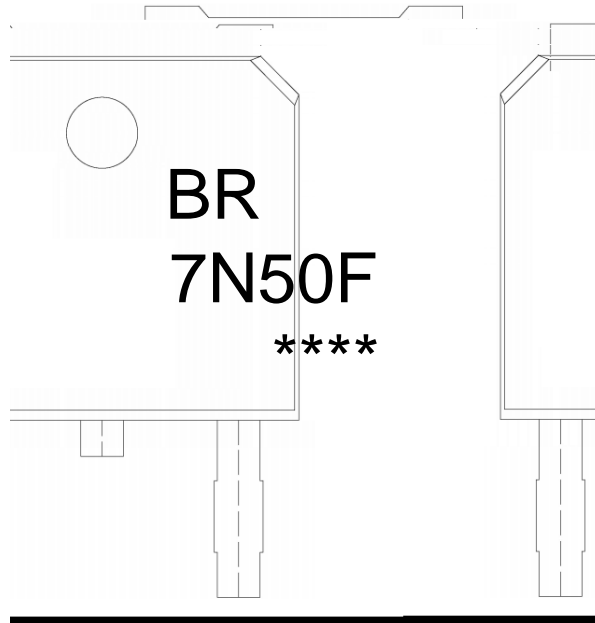
单位: mm

Dimensions in Millimeters		Dimensions in Millimeters	
Min	Max	Min	Max
2.24	2.34	0.95	1.25
4.42	4.62	0.70	0.80
0.85	1.20	0.70	0.80
0.00	0.10	6.45	6.75
0.00	0.10	5.10	5.50

0

T0-252

/ Marking Instructions



BR

7N50F

Note:

BR: Company Code

7N50F: Product Type Code

****: Lot No. Code, code change with Lot No

BRD7N50F