

Rev.F May.-2019

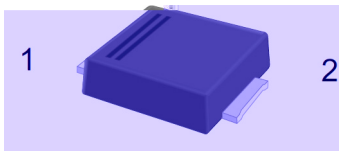
50V ~ 600V 2.0A SMBF

Surface Mount Superfast Recovery Rectifier, Reverse Voltage: 50 to 600V, Forward Current: 2.0A, SMBF thin package.

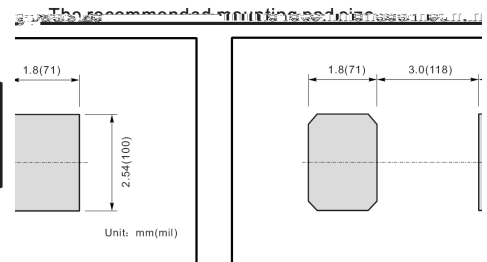
RoHS 2011/65/EU

Glass Passivated Chip Junction, Fast reverse recovery time, Lead free in comply with EU ROHS 2011/65/EU directives, For surface mounted applications, Halogen free product.

General purpose.



PIN	DESCRIPTION
1	Cathode
2	Anode



See Marking Instructions.

Rev.F May.-2019

Parameter	Symbol	Rating							Unit
		ES2ABF	ES2BBF	ES2CBF	ES2DBF	ES2EBF	ES2GBF	ES2JBF	
Maximum Repetitive Peak Reverse Voltage	V_{RRM}	50	100	150	200	300	400	600	V
Maximum RMS voltage	V_{RMS}	35	70	105	140	210	280	420	V
Maximum DC Blocking Voltage	V_{DC}	50	100	150	200	300	400	600	V
Maximum Average Forward Rectified Current at $T_L=100$	$I_{F AV}$	2.0							A
Peak Forward Surge Current 8.3 ms Single Half Sine Wave Superimposed on Rated Load (JEDEC Method)	I_{FSM}	50							A
Typical Junction Capacitance at $V_R=4V, f=1MHz$	C_j	45							pF
Typical Thermal Resistance ¹	R_{JA}	65							/W
Operating and Storage Temperature Range	T_j, T_{stg}	-55~+150							

Note:

1 P.C.B. mounted with 0.5 X 0.5" (12.7 X 12.7 mm) copper pad areas.

Parameter	Symbol	Test Conditions	Rating						Unit	
			ES2ABF	ES2BBF	ES2CBF	ES2DBF	ES2EBF	ES2GBF		ES2JBF
Maximum Forward Voltage	V_F	$I_F=2.0A$	1.0			1.25		1.65	V	
Maximum DC Reverse Current at Rated DC Blocking Voltage	I_R	$T_a=25$	5.0						μA	
		$T_a=125$	100						μA	
Maximum Reverse Recovery Time	t_{rr}	$I_F=0.5A$ $I_R=1.0A$ I_{rr}								

Ō ? d • Ž ϕ / Electrical Characteristic Curve

ES2ABF~ES2JBF
Rev.F May.-2019

DATA SHEET

, My f / Marking Instructions

ES2ABF~ES2JBF
Rev.F May.-2019

DATA SHEET

š WD t... • Ž ϕ (x/) / :KSVKXGZ[XK 6XULORK LUX /8 8KLRU] 9URJKXOTM 6

^a ϕ y

1o• Ä ½ “ † 150 ½180 - k ž • 60 ½90sec;

2o• Q › “ † 245 r5 - k ž • 4 Ò 5 r

Note:

1.Preheating:150~180 - , Time:60~90sec.