

**/ Descriptions**

50V ~ 600V

3.0A SMB

**/ Features**

2011/65/EU

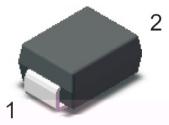
RoHS

**/ Applications**

**/ Equivalent Circuit**

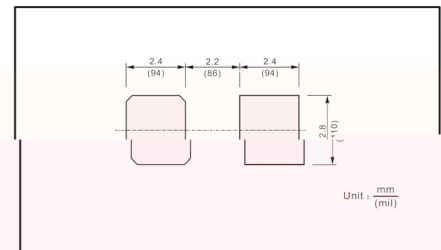


**/ Pinning**



PIN	DESCRIPTION
1	Cathode
2	Anode

The recommended mounting pad size.



**/ Marking**

**/ Absolute Maximum Ratings(Ta=25 )**


**/ Electrical Characteristics(Ta=25 )**

								μ
								μ

/ Electrical Characteristic Curve

Fig.1 Reverse Recovery Time Characteristic And Test Circuit Diagram.

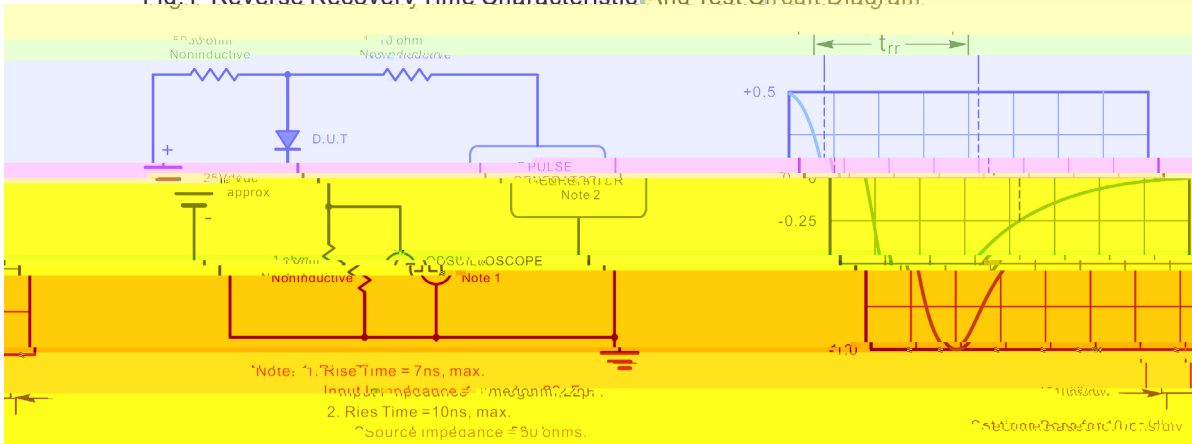


Fig.2 Maximum Average Forward Current Rating.

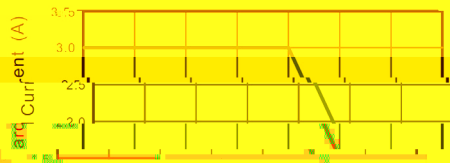


Fig.3 Typical Reverse Characteristic

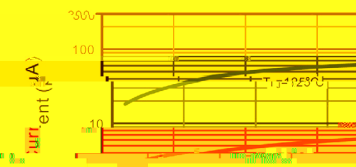


Fig.4 Typical Forward Characteristics

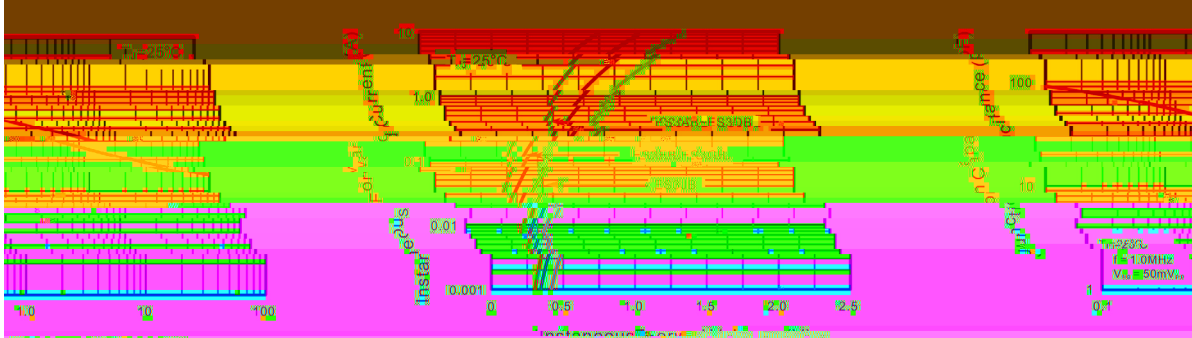
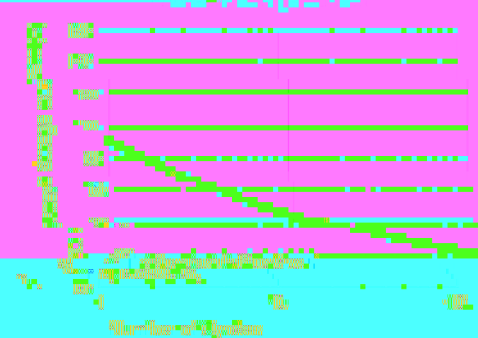
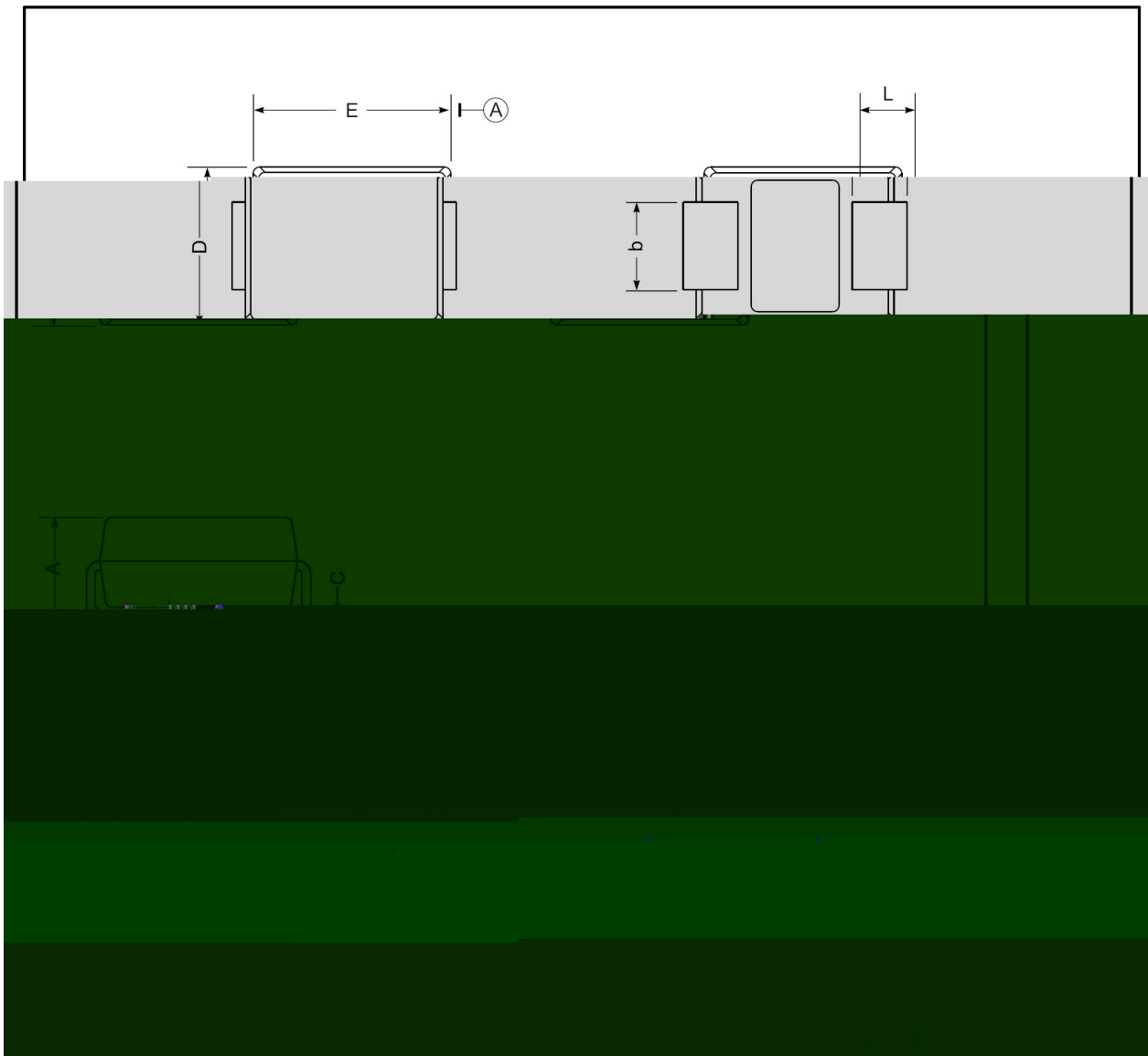


Fig.5 Typical Capacitance



/ Package Dimensions

SMB

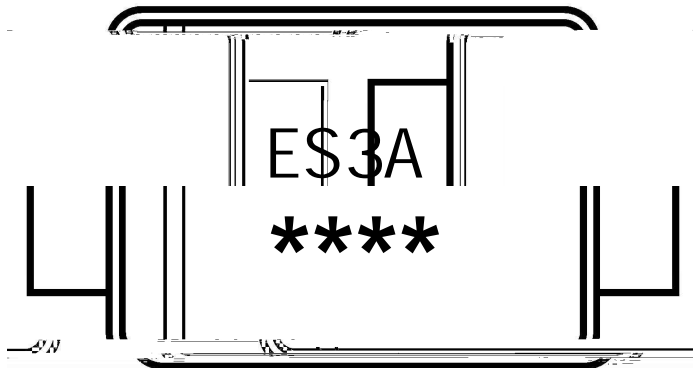


/ Marking Instructions

# Marking



/ Marking Instructions



ES3A  
\*\*\*\*

1 \*

3 \*

ES3A  
\*\*\*\*

\*

\*

**ES3AB~ES3JB**