

**/ Descriptions**

TO-126F          PNP          Silicon PNP transistor in a TO-126F Plastic Package.

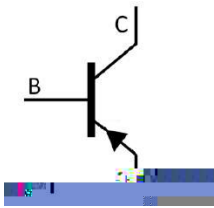
**/ Features**

KSE340  
High collector-Emitter breakdown voltage    Suitable for transformer    complement to KSE340.

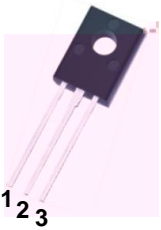
**/ Applications**

High voltage general purpose applications.

**/ Equivalent Circuit**



**/ Pinning**



PIN1    Emitter          PIN 2    Collector          PIN 3    Base

**/  $h_{FE}$  Classifications & Marking**

See Marking Instructions.

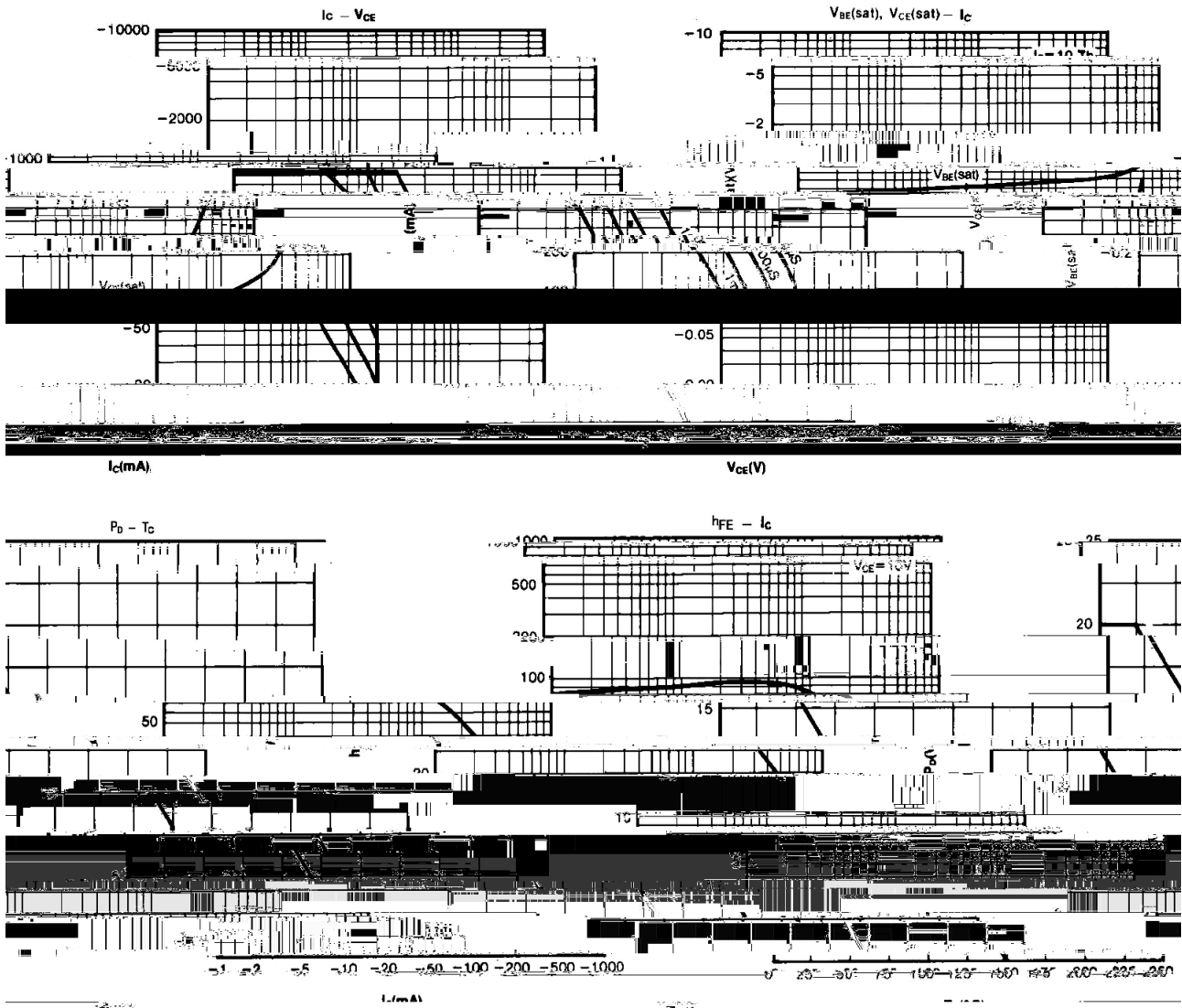
**/ Absolute Maximum Ratings(Ta=25 )**

| Parameter                      | Symbol         | Rating  | Unit |
|--------------------------------|----------------|---------|------|
| Collector to Base Voltage      | $V_{CBO}$      | -300    | V    |
| Collector to Emitter Voltage   | $V_{CEO}$      | -300    | V    |
| Emitter to Base Voltage        | $V_{EBO}$      | -5.0    | V    |
| Collector Current – Continuous | $I_C$          | -500    | mA   |
| Collector Power Dissipation    | $P_C(T_c=25 )$ | 20      | W    |
| Junction Temperature           | $T_j$          | 150     |      |
| Storage Temperature Range      | $T_{stg}$      | -55 150 |      |

**/ Electrical Characteristics(Ta=25 )**

| Parameter                              | Symbol    | Test Conditions           | Min  | Typ | Max  | Unit    |
|--|-----------|---------------------------|------|-----|------|---------|
| Collector to Emitter Breakdown Voltage | $V_{CEO}$ | $I_C=-1.0mA$ $I_B=0$      | -300 |     |      | V       |
| Collector Cut-Off Current              | $I_{CBO}$ | $V_{CB}=-300V$ $I_E=0$    |      |     | -100 | $\mu A$ |
| Emitter Cut-off Current                | $I_{EBO}$ | $V_{BE}=-3.0V$ $I_C=0$    |      |     | -100 | $\mu A$ |
| DC Current Gain                        | $h_{FE}$  | $V_{CE}=-10V$ $I_C=-50mA$ | 30   |     | 240  |         |

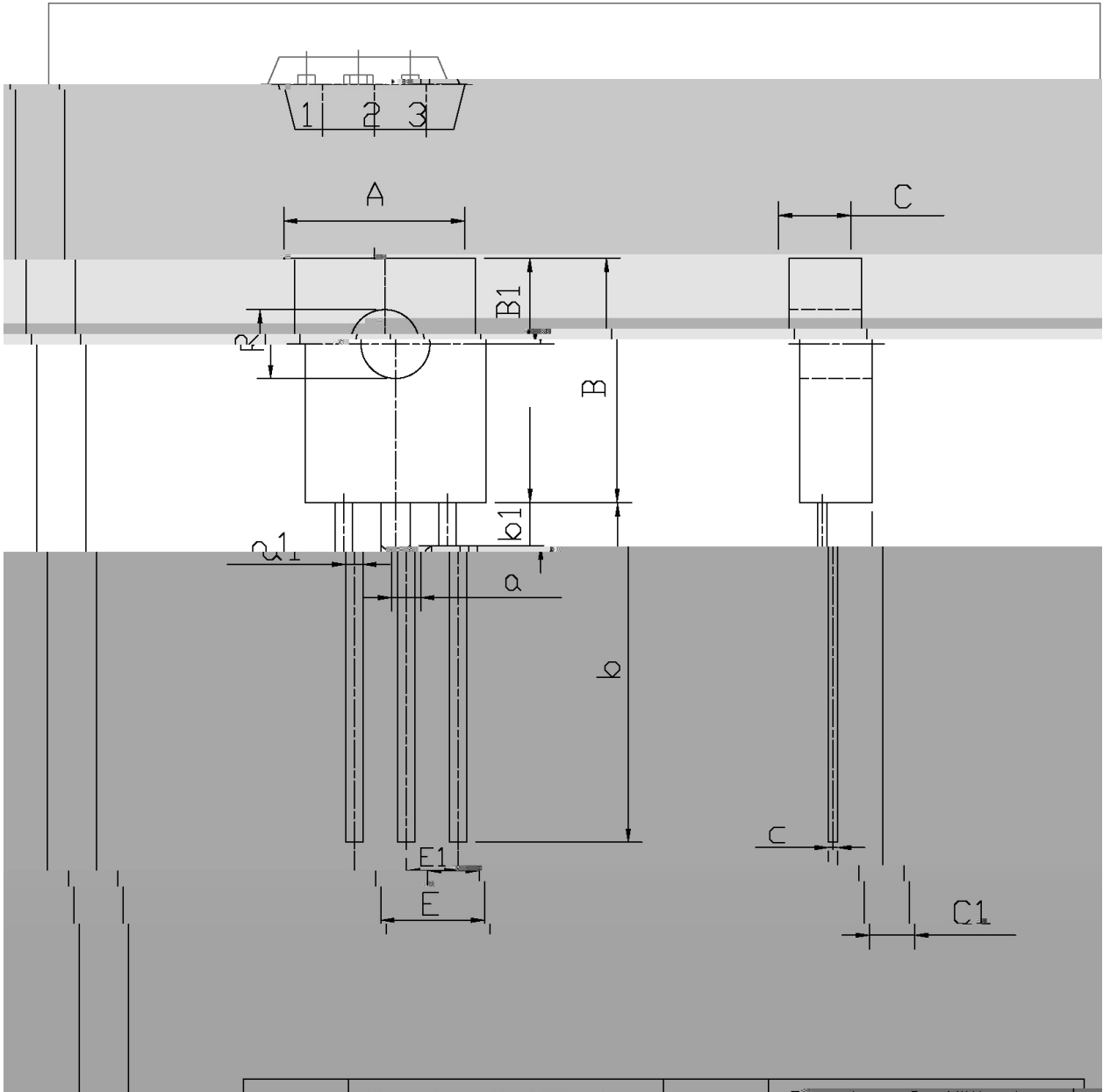
/ Electrical Characteristic Curve



/ Package Dimensions

TU-126F

单位: mm



| Symbol | Min  | Max  | Symbol | Min  | Max |
|--------|------|------|--------|------|-----|
| A      | 7.8  | 8.2  | a1     | 0.65 |     |
| B      | 10.9 | 11.0 |        |      |     |

**/ Marking Instructions**



BR

KSE350

\*\*\*\*

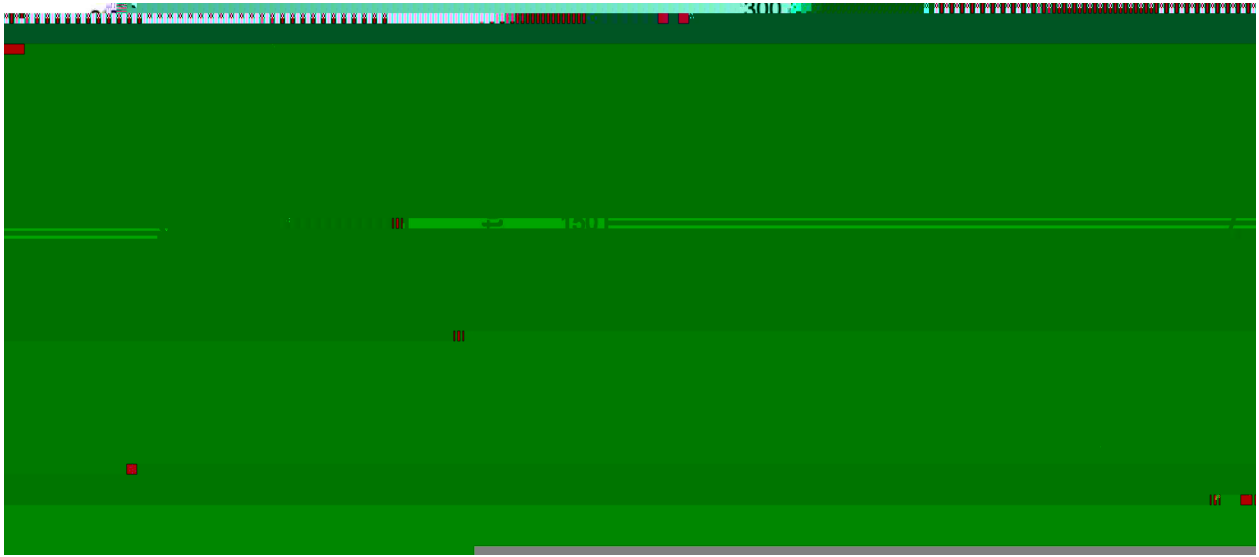
Note:

BR: Company Code

KSE350: Product Type.

\*\*\*\*: Lot No. Code, code change with Lot No.

( ) / Temperature Profile for Dip Soldering(Pb-Free)



Note:

- |   |       |     |           |        |   |
|---|-------|-----|-----------|--------|---|
| 1 | 25    | 150 | 60        | 90sec; | 1.Preheating:25~150 , Time:60~90sec.    |
| 2 | 255±5 |     | 5±0.5sec; |        | 2.Peak Temp.:255±5 , Duration:5±0.5sec. |
| 3 |       | 2   | 10        | /sec.  | 3. Cooling Speed: 2~10 /sec.            |

/ Resistance to Soldering Heat Test Conditions

270±5                      10±1 sec.                      Temp.:270±5                      Time:10±1 sec

/ Packaging SPEC.

/ BULK

| Package Type<br>封装形式 | Units 包装数量         |                         |                        |                              |                        | Dimension 包装尺寸 (unit: mm <sup>3</sup> ) |             |             |
|----------------------|--------------------|-------------------------|------------------------|------------------------------|------------------------|---|-------------|-------------|
|                      | Units/Tube<br>只/套管 | Tubes/Inner Box<br>套管/盒 | Units/Inner Box<br>只/盒 | Inner Boxes/Outer Box<br>盒/箱 | Units/Outer Box<br>只/箱 | Tube 套管                                 | Inner Box 盒 | Outer Box 箱 |
| TO-126/F             | 500                | 6                       | 3,000                  | 5                            | 15,000                 | 135×190                                 | 237×172×102 | 560×245×195 |

/ TUBE

| Package Type<br>封装形式 | Units 包装数量         |                         |                        |                              |                        | Dimension 包装尺寸 (unit: mm <sup>3</sup> ) |             |             |
|----------------------|--------------------|-------------------------|------------------------|------------------------------|------------------------|---|-------------|-------------|
|                      | Units/Tube<br>只/套管 | Tubes/Inner Box<br>套管/盒 | Units/Inner Box<br>只/盒 | Inner Boxes/Outer Box<br>盒/箱 | Units/Outer Box<br>只/箱 | Tube 套管                                 | Inner Box 盒 | Outer Box 箱 |
| TO-126/F             | 65                 | 26                      | 1,690                  | 5                            | 8,450                  | 532×31×5.6                              | 555×164×50  | 575×290×180 |