

/ Descriptions

KF \$0) CD GE G Silicon PNP transistor in a TO-92LM Plastic Package.

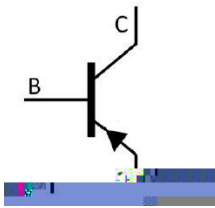
/ Features

BK: *)) /
High voltage, complementary to KTC3228.

/ Applications

Color TV vertical deflection output, color TV class B sound output application.

/ Equivalent Circuit



/ Pinning



PIN1 Base PIN 2 Collector PIN 3 Emitter

/ h_{FE} Classifications & Marking

| | | | |
|--|--------|---------|---------|
| h _{FE} Classifications Symbol | R | O | Y |
| h _{FE} Range | 60~120 | 100~200 | 160~320 |

/ Absolute Maximum Ratings(Ta=25)

| Parameter | Symbol | Rating | Unit |
|--------------------------------|-----------|---------|------|
| Collector to Base Voltage | V_{CBO} | -160 | V |
| Collector to Emitter Voltage | V_{CEO} | -160 | V |
| Emitter to Base Voltage | V_{EBO} | -6 | V |
| Collector Current - Continuous | I_C | -1.0 | A |
| Base Current - Continuous | I_B | -0.5 | A |
| Collector Power Dissipation | P_C | 1.0 | W |
| Junction Temperature | T_j | 150 | |
| Storage Temperature Range | T_{stg} | -55 150 | |

/ Electrical Characteristics(Ta=25)

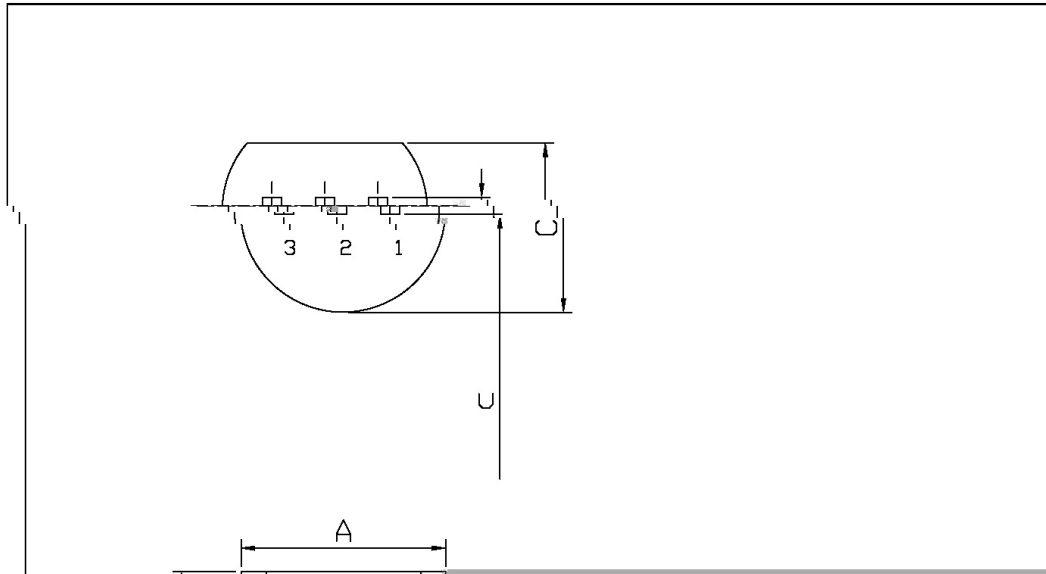
| Parameter | Symbol | Test Conditions | Min | Typ | Max | Unit |
|---|---------------|-----------------------------------|-------|-----|-------|---------|
| Collector to Emitter Breakdown Voltage | V_{CEO} | $I_C=-10mA$ $I_B=0$ | -160 | | | V |
| Collector Cut-Off Current | I_{CBO} | $V_{CB}=-150V$ $I_E=0$ | | | -1.0 | μA |
| Emitter Cut-Off Current | I_{EBO} | $V_{EB}=-6V$ $I_C=0$ | | | -1.0 | μA |
| DC Current Gain | h_{FE} | $V_{CE}=-5V$ $I_C=-200mA$ | 60 | | 320 | |
| Collector to Emitter Saturation Voltage | $V_{CE(sat)}$ | $I_C=-500mA$ $I_B=-50mA$ | | | -1.5 | V |
| Base to Emitter Voltage | V_{BE} | $V_{CE}=-5V$ $I_C=-5mA$ | -0.45 | | -0.75 | V |
| Transition Frequency | f_T | $V_{CE}=-5V$ $I_C=-200mA$ | 15 | 50 | | MHz |
| Collector output capacitance | C_{ob} | $V_{CB}=-10V$ $I_E=0$ $f=1MHz$ | | | 35 | pF |

KTA1275
Rev.E Mar.-2016

/ Package Dimensions

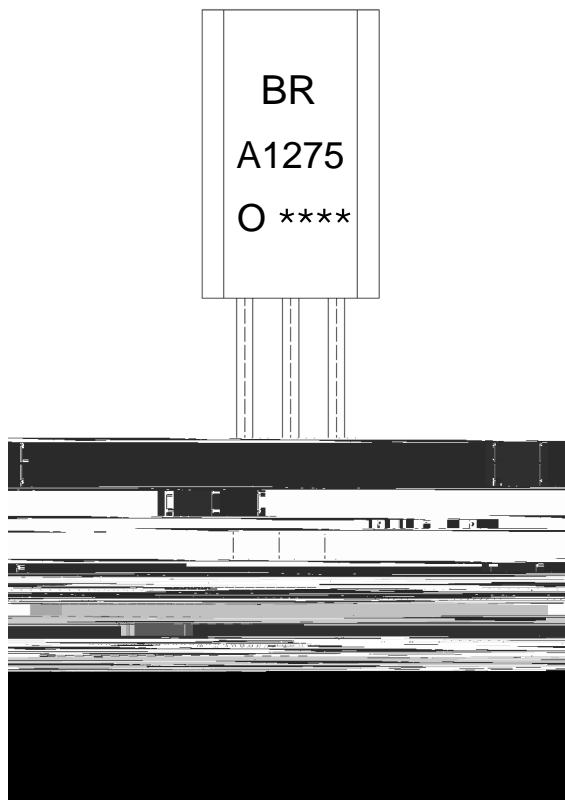
TO-92LM

Unit: mm



| Symbol | Dimensions In Millimeters | |
|--------|---------------------------|-----|
| | Min | Max |
| A | 4.47 | 5.1 |
| B | 4.8 | 5.1 |
| C | 4.8 | 5.1 |
| U | 1.7 | 2.0 |

/ Marking Instructions



9| 1
8()
F 1
!!!!

Note:

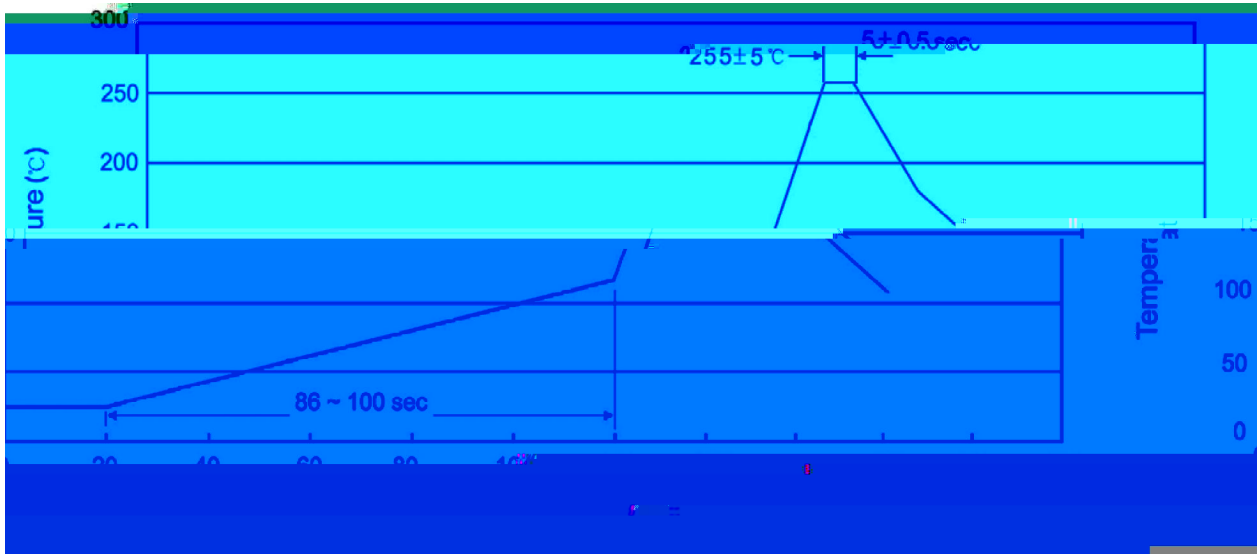
BR: Company Code.

A1275: Product Type.

O: h_{FE} Classifications Symbol

****: Lot No. Code,code change with Lot No.

() / Temperature Profile for Dip Soldering(Pb-Free)



Note:

- | | | | | | |
|---|--------|-----|------------|--------|---|
| 1 | 25 | 150 | 60 | 90sec; | 1.Preheating:25~150 , Time:60~90sec. |
| 2 | 255..5 | | 5..0.5sec; | | 2.Peak Temp.:255..5 , Duration:5..0.5sec. |
| 3 | | 2 | 10 | /sec. | 3. Cooling Speed: 2~10 /sec. |

/ Resistance to Soldering Heat Test Conditions

270..5 10..1 sec. Temp.:270..5 Time:10..1 sec

/ Packaging SPEC.

/ BULK

| Package Type 封装形式 | Units 包装数量 | | Dimension 包装尺寸 (unit: mm3) | | | |
|----------------------|------------------|-----------------------|----------------------------|------------------------------|------------------------|-------|
| | Units/Bag 只/袋 | Bags/Inner Box 袋/盒 | Units/Inner Box 只/盒 | Inner Boxes/Outer Box 盒/箱 | Units/Outer Box 只/箱 | Bag 袋 |