

KF \$) CD E GE Silicon NPN transistor in a TO-92LM Plastic Package.

BK8() . . .
High voltage, complementary to KTA1275.

Color TV vertical deflection output, color TV class B sound output application.

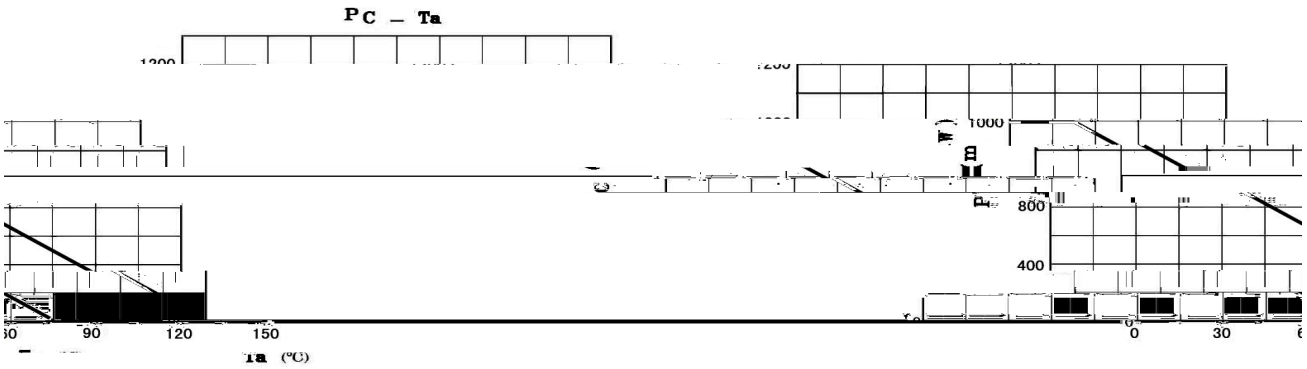
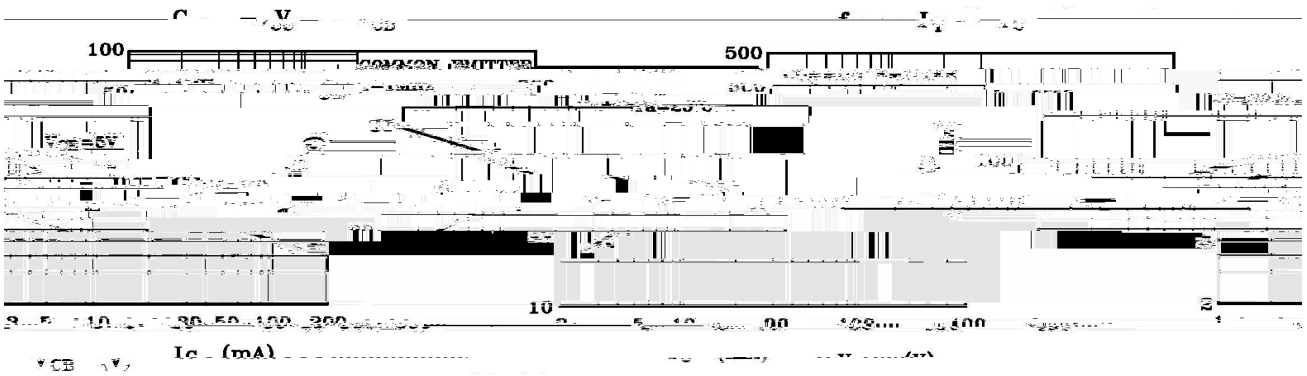
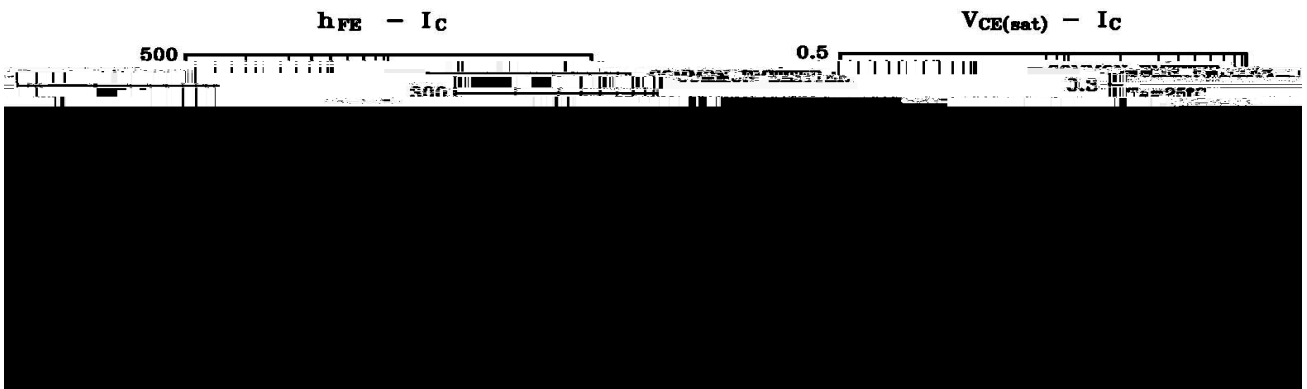
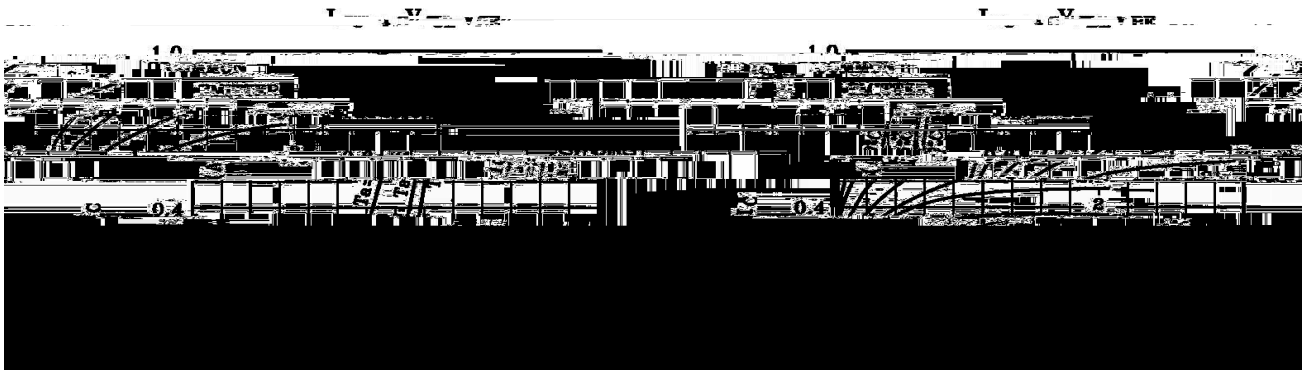


PIN1 Base PIN 2 Collector PIN 3 Emitter

| Parameter | Symbol | Rating | Unit |
|--------------------------------|-----------|---------|------|
| Collector to Base Voltage | V_{CBO} | 160 | V |
| Collector to Emitter Voltage | V_{CEO} | 160 | V |
| Emitter to Base Voltage | V_{EBO} | 6.0 | V |
| Collector Current - Continuous | I_C | 1.0 | A |
| Base Current - Continuous | I_B | 0.5 | A |
| Collector Power Dissipation | P_C | 1.0 | W |
| Junction Temperature | T_j | 150 | |
| Storage Temperature Range | T_{stg} | -55 150 | |

| Parameter | Symbol | Test Conditions | Min | Typ | Max | Unit |
|--|-----------|---------------------------|-----|-----|-----|------|
| Collector to Emitter Breakdown Voltage | V_{CEO} | $I_C=10mA$ $I_B=0$ | 160 | | | V |
| Collector Cut-Off Current | I_{CBO} | $V_{CB}=150V$ $I_E=0$ | | | 1.0 | A |
| Emitter Cut-Off Current | I_{EBO} | $V_{EB}=6.0V$ $I_C=0$ | | | 1.0 | A |
| DC Current Gain | h_{FE} | $V_{CE}=5.0V$ $I_C=200mA$ | 60 | | 320 | |

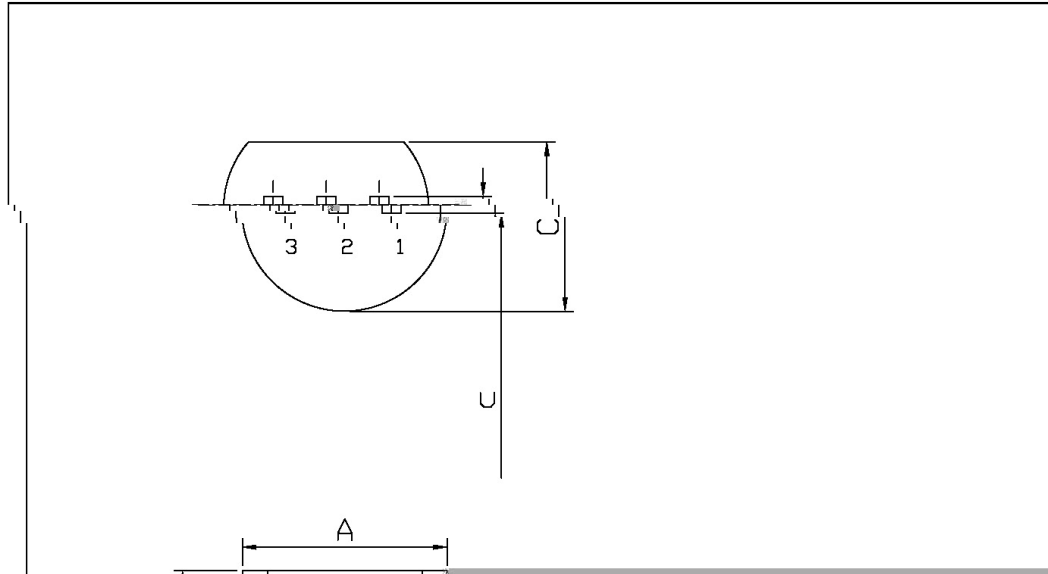
/ Electrical Characteristic Curve



/ Package Dimensions

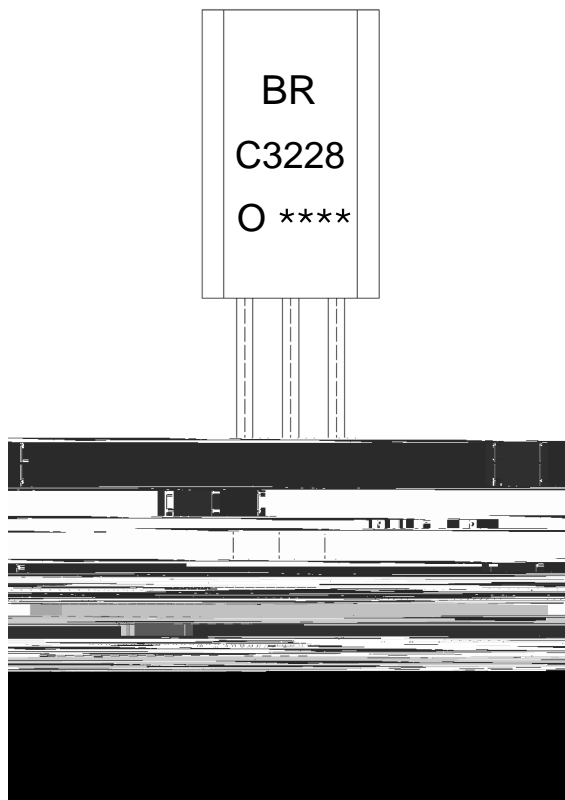
TO-92LM

Unit: mm



| Symbol | Dimensions In Millimeters | |
|--------|---------------------------|-----|
| | Min | Max |
| A | 1.47 | 5.1 |
| C | 2.9 | 3.3 |
| U | 1.7 | 2.0 |

/ Marking Instructions



9| 1
: *) /
F 1
!!!!

Note:

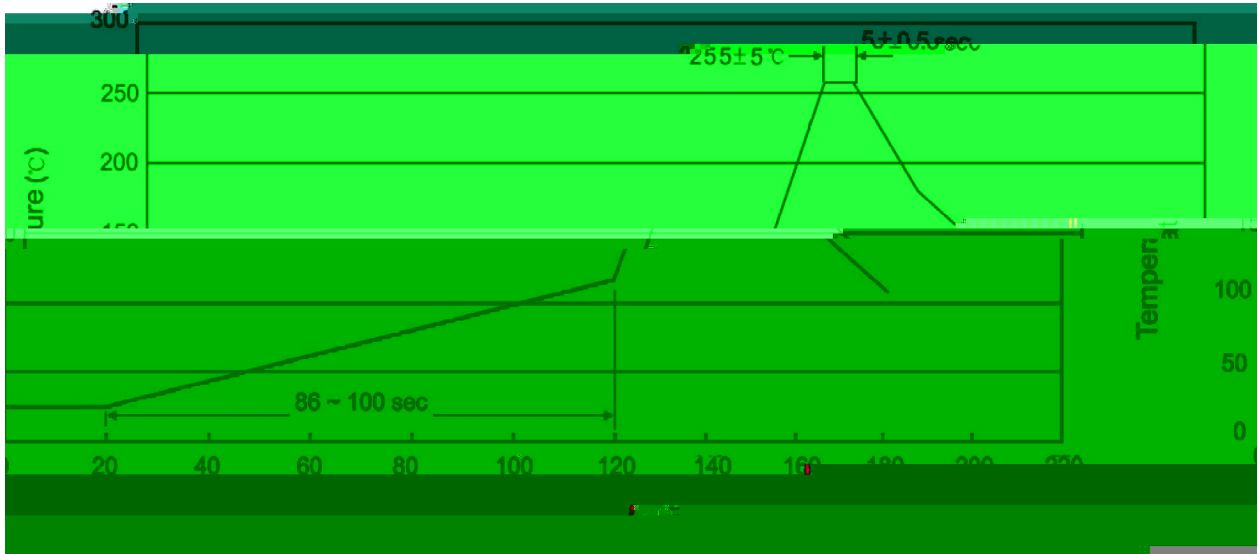
BR: Company Code.

C3228: Product Type.

O: h_{FE} Classifications Symbol

****: Lot No. Code, code change with Lot No.

() / Temperature Profile for Dip Soldering(Pb-Free)



Note:

- | | | | |
|---|--------|------------|---|
| 1 | 25 150 | 60 90sec; | 1.Preheating:25~150 , Time:60~90sec. |
| 2 | 255..5 | 5..0.5sec; | 2.Peak Temp.:255..5 , Duration:5..0.5sec. |
| 3 | 2 10 | /sec. | 3. Cooling Speed: 2~10 /sec. |

/ Resistance to Soldering Heat Test Conditions

270..5 10...1 sec. Temp.:270..5 Time:10...1 sec

/ Packaging SPEC.

/ BULK

| Package Type | Units | | | | | Dimension (unit mm3) | | |
|--------------|-----------|----------------|-----------------|-----------------------|-----------------|----------------------|-------------|-------------|
| | Units/Bag | Bags/Inner Box | Units/Inner Box | Inner Boxes/Outer Box | Units/Outer Box | Bag | Inner Box | Outer Box |
| TO-92LM | 1,000 | 8 | 8,000 | 5 | 40,000 | 135×190 | 237×172×102 | 560×245×195 |

/ AMMO

| Package Type | Units | | | | | Dimension (unit mm3) | |
|--------------|------------|----------------|----------------|-----------------------|-----------------|----------------------|----------------------------|
| | Units/tape | Tape/Inner Box | Rows/Inner Box | Inner Boxes/Outer Box | Units/Outer Box | Inner Box | Outer Box |
| TO-92LM | 2,500 | 1 | 100 | 10 | 25,000 | 328×230×42 | 480×346×235 547×407×268 |

/ Notices