

LV20150FCT

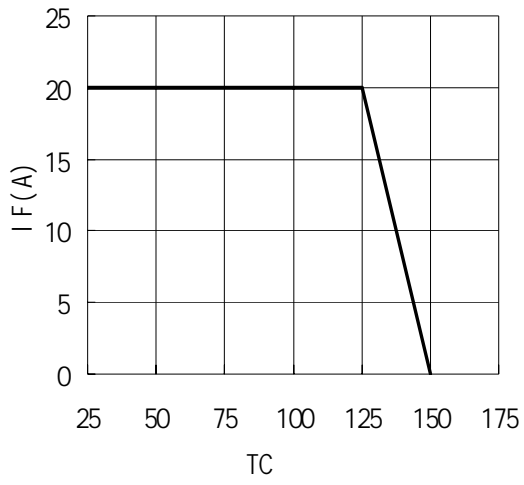
Rev.F Mar.-2016

Parameter	Symbol	Rating	Unit
Recurrent Peak Reverse Voltage Working Peak Reverse Voltage DC Blocking Voltage	V_{RM} V_{RSM} V_{DC}	150	V
RMS Voltage	V_{RMS}	105	V
Average Rectified Forward Current	$I_{F(AV)}$	2× 10	A
Non Repetitive Peak Surge Current	I_{FSM}	120	A
Thermal Resistance Junction to Case	R_{Jc}	5.0	/W
Junction and Storage Temperature Range	T_j T_{stg}	-55 +150	

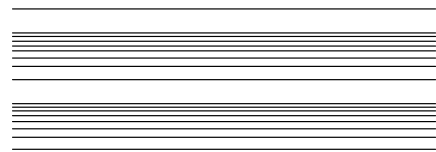
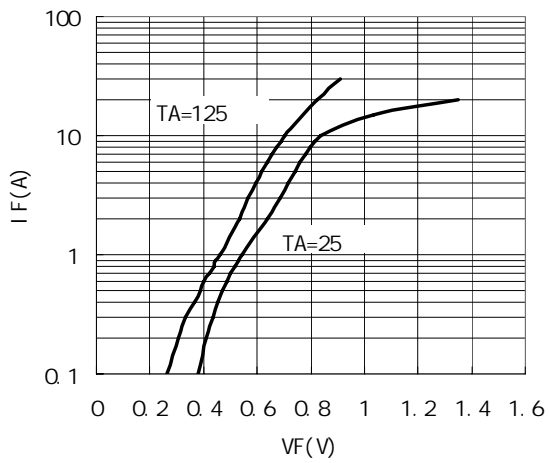
Parameter	Symbol	Test Conditions	Min	Typ	Max	Unit
Breakdown Voltage	V_{BR}	I				

/ Electrical Characteristic Curve

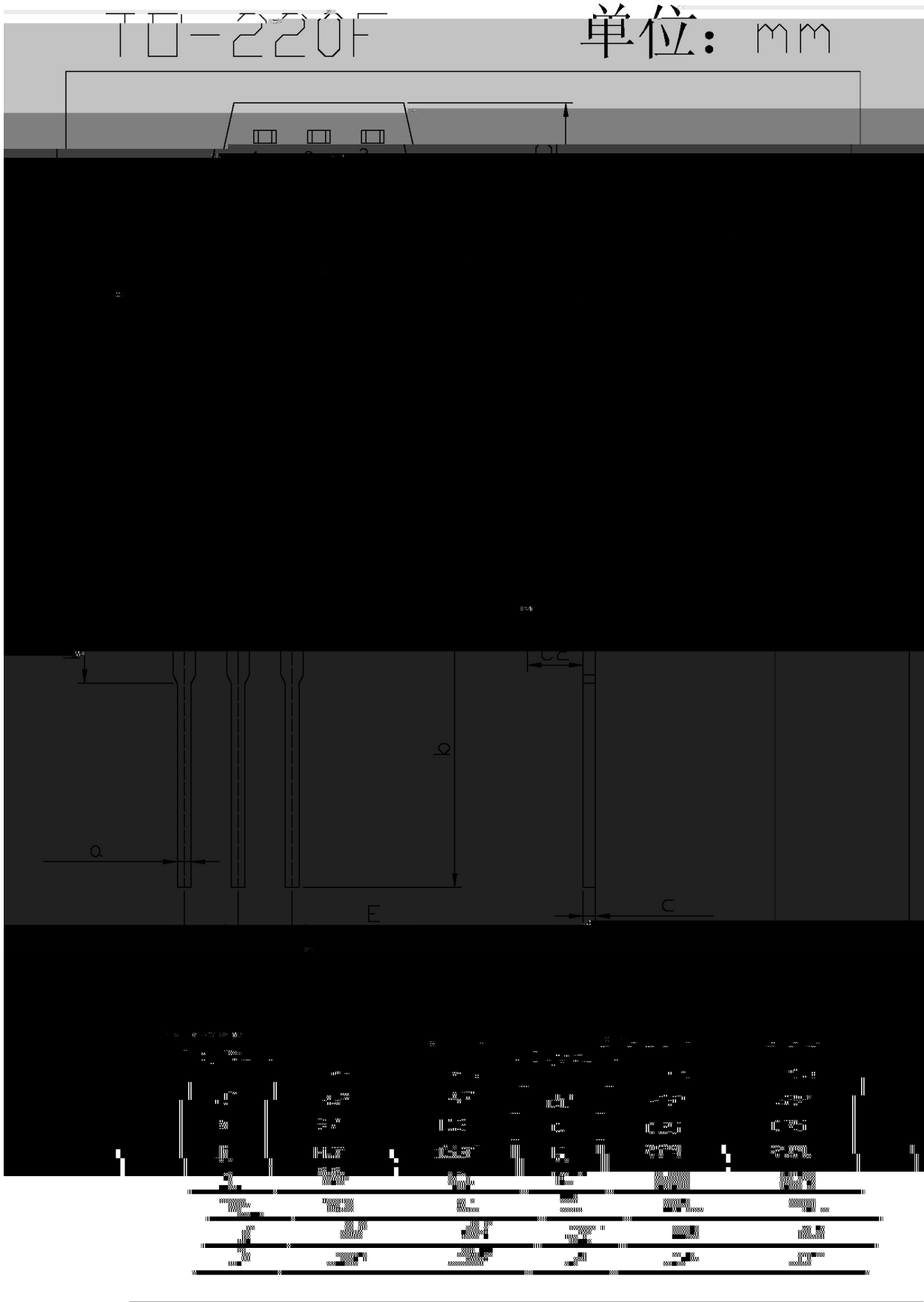
IF - TC



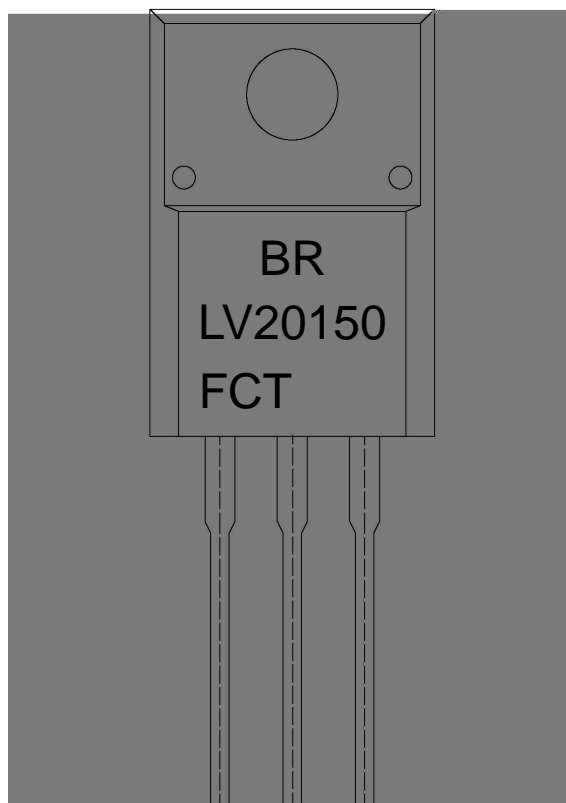
IF - VF



/ Package Dimensions



/ Marking Instructions

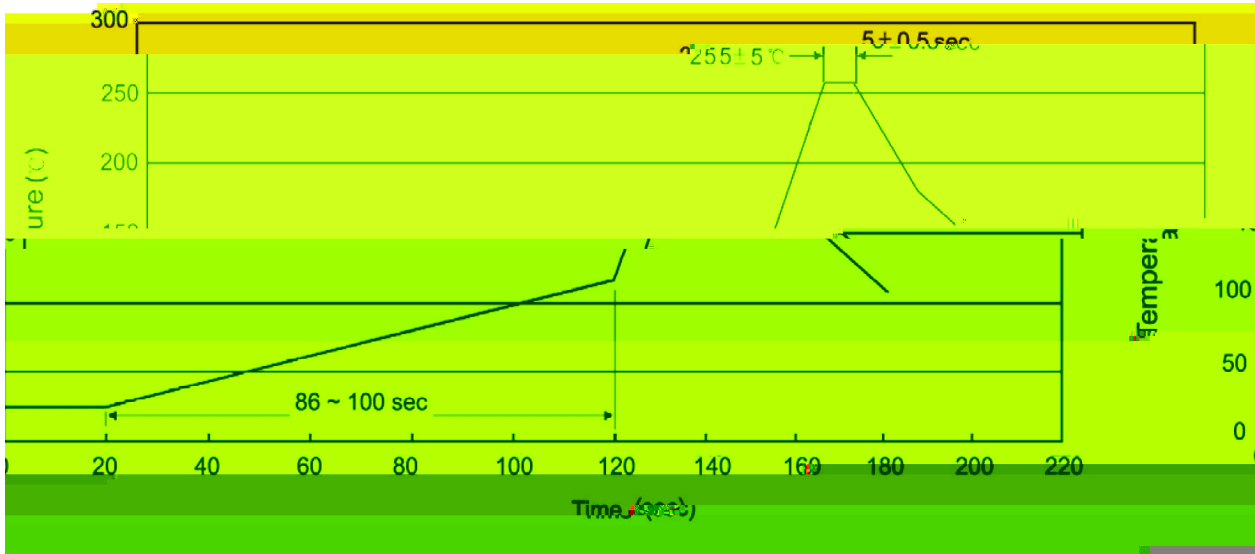


91
OM' (,
=1
: K1
!!!!

Note:

BR:	Company Code
LV20150:	Product Type
F:	Package Code
CT:	Internal Structure
****:	Lot No. Code, code change with Lot No.

() / Temperature Profile for Dip Soldering(Pb-Free)



Note:

- | | | | | | |
|---|--------|-----|------------|----------|---|
| 1 | 25 | 150 | 60 | 90sec; | 1.Preheating:25~150 , Time:60~90sec. |
| 2 | 255..5 | | 5..0.5sec; | | 2.Peak Temp.:255..5 , Duration:5..0.5sec. |
| 3 | | | 2 | 10 /sec. | 3. Cooling Speed: 2~10 /sec. |

/ Resistance to Soldering Heat Test Conditions

270..5 10..1 sec. Temp.:270±5 Time:10±1 sec

/ Packaging SPEC.

/ BULK

Package Type	Units				Dimension			(unit mm ³)

/ TUBE

Package Type	Units				Dimension			(unit mm ³)

/ Notices