

LV3045BCT

Rev.F May.-2016

KF $\text{\$}$ - *

Schottky Barrier Diode in a TO-263 Plastic Package.

Low forward voltage drop, low power losses, High efficiency operation.

For use in high frequency inverters, switching power supplies, freewheeling diodes, OR-ing diode,

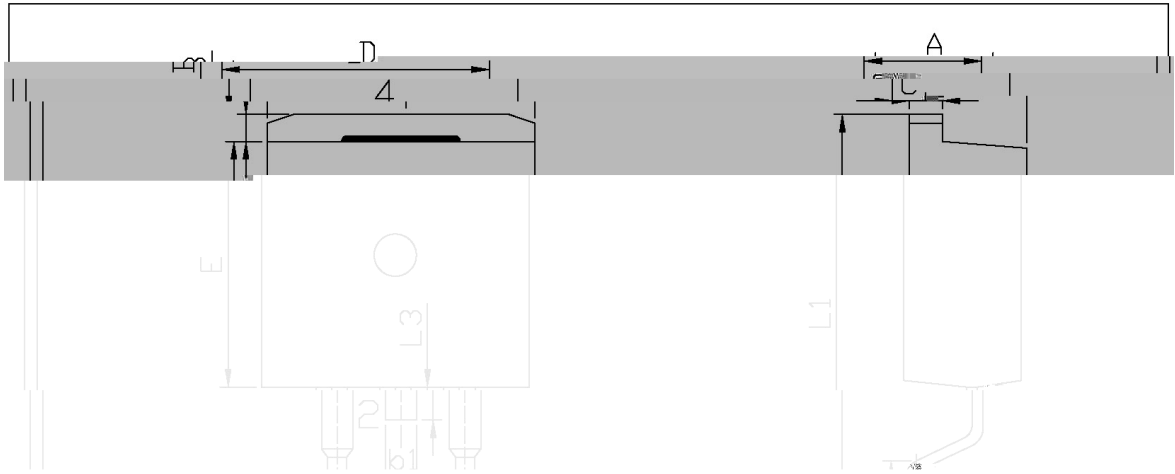
dc-to-dc converters and re

Parameter

Symbol

Rating

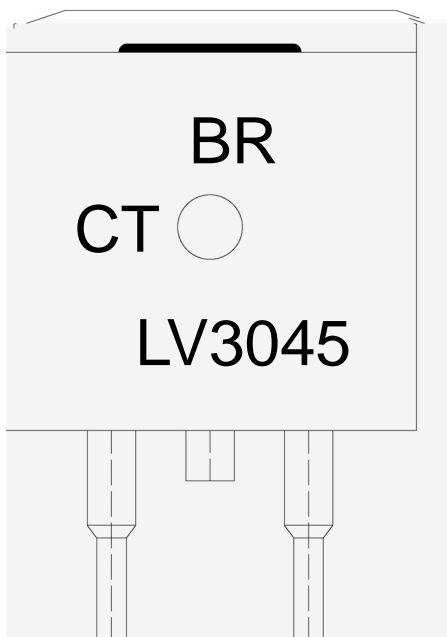
/ Package Dimensions



Max	Min	Max	Min
9.40	4.30	4.70	9.00
2.74	1.00	1.40	2.24
16.00	b1	1.15	1.35
2.64	b2	0.10	0.30
1.60	C	1.20	1.40
	D	9.80	10.20



/ Marking Instructions



91

QM' +,

: K1

!!!!

Note:

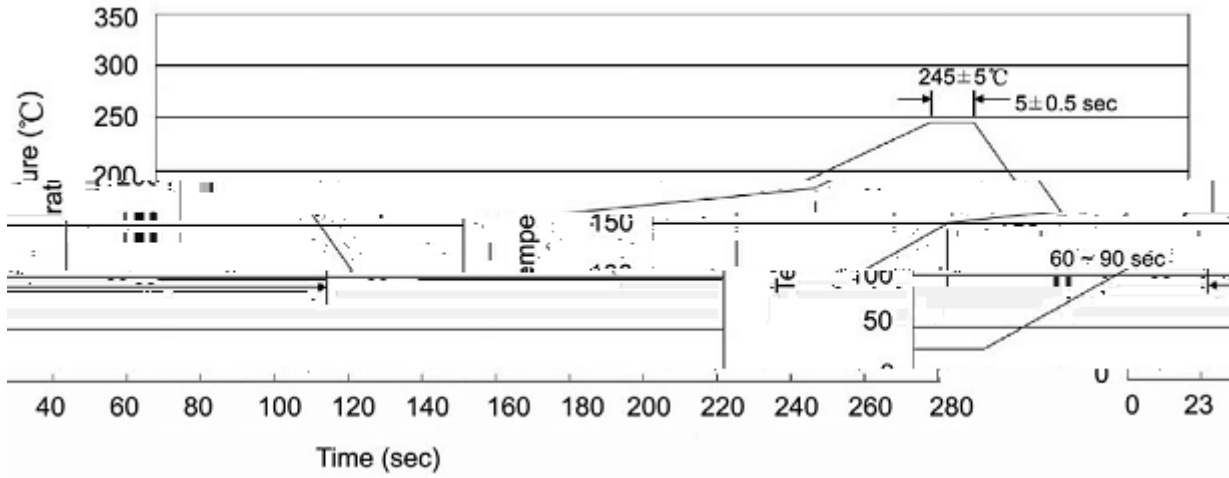
BR: Company Code

QM' +, Product Type.

: K: Internal Structure

****: Lot No. Code, code change with Lot No.

() / Temperature Profile for IR Reflow Soldering(Pb-Free)



Note:

- | | | | | | |
|---|--------|-----|------------|----------|---|
| 1 | 25 | 150 | 60 | 90sec; | 1.Preheating:25~150 , Time:60~90sec. |
| 2 | 245..5 | | 5..0.5sec; | | 2.Peak Temp.:245..5 , Duration:5..0.5sec. |
| 3 | | | 2 | 10 /sec. | 3. Cooling Speed: 2~10 /sec. |

/ Resistance to Soldering Heat Test Conditions

260..5 10..1 sec. Temp.:260±5 Time:10±1 sec

/ Packaging SPEC.

/ REEL

Package Type	Units				Dimension (unit mm ³)		