

MBRB2045CT

Rev.E May.-2016

DATA SHEET

/ Absolute Maximum Ratings(Ta=25)

Parameter	Symbol	Rating	Unit
Peak Repetitive Reverse Voltage Working Peak Reverse Voltage DC Reverse Voltage	V_{RRM} V_{RWM} V_{DC}	45	V
RMS Reverse Voltage	V_{RMS}	31.5	V
Average forward rectified Current	$I_{F(AV)}$	2× 10	A
Non Repetitive Peak Surge Current	I_{FSM}	200	A
Thermal Resistance Junction to Case	R_{Jc}	2.2	/W
Junction and Storage Temperature Range	$T_j T_{stg}$	-55~+150	

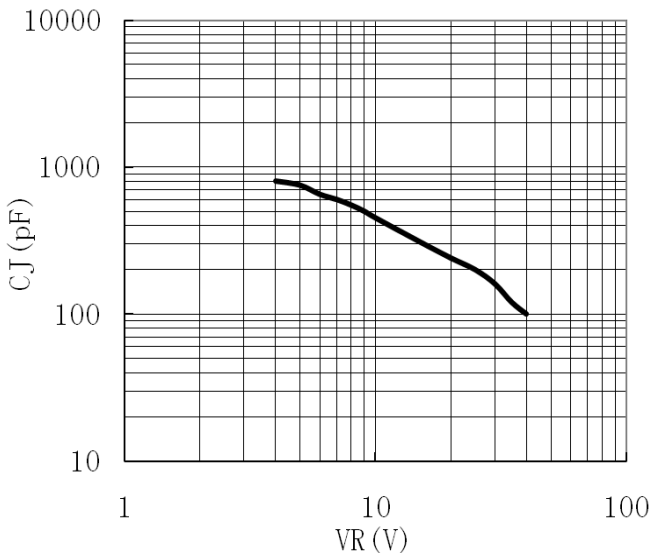
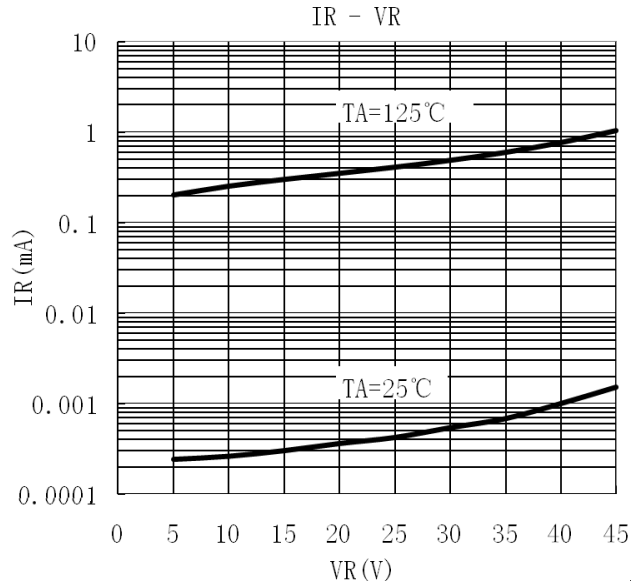
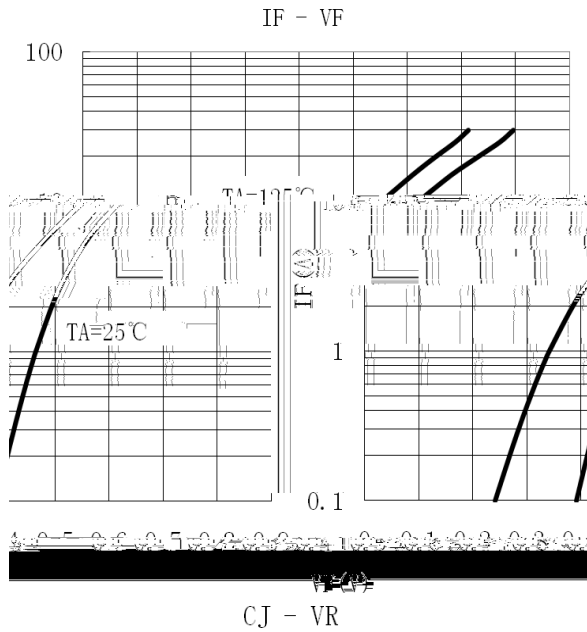
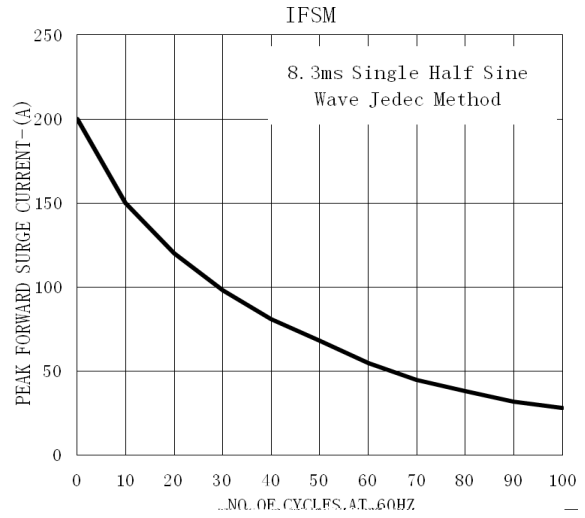
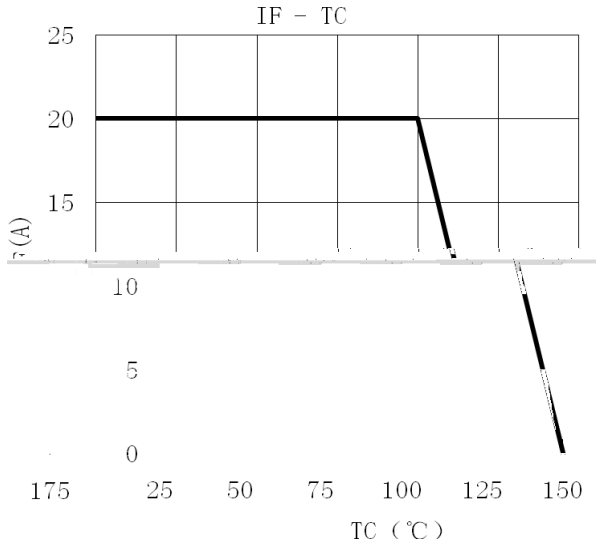
/ Electrical Characteristics(Ta=25)

Parameter	Symbol	Test Conditions	Min	Typ	Max	Unit
Reverse Voltage	$V_{(BR)R}$	$I_R = 1mA$ $T_a = 25$	45			V
Peak Forward Voltage	V_{FM}	$I_F = 5.0A$ $T_a = 25$			0.60	V
		$I_F = 5.0A$ $T_a = 125$			0.50	V
		$I_F = 10A$ $T_a = 25$			0.70	V
		$I_F = 10A$ $T_a = 125$			0.60	V
Instantaneous Reverse Current	I_R Note 1	$V_R = 45V$ $T_a = 25$			100	uA
		$V_R = 45V$ $T_a = 125$			15	mA

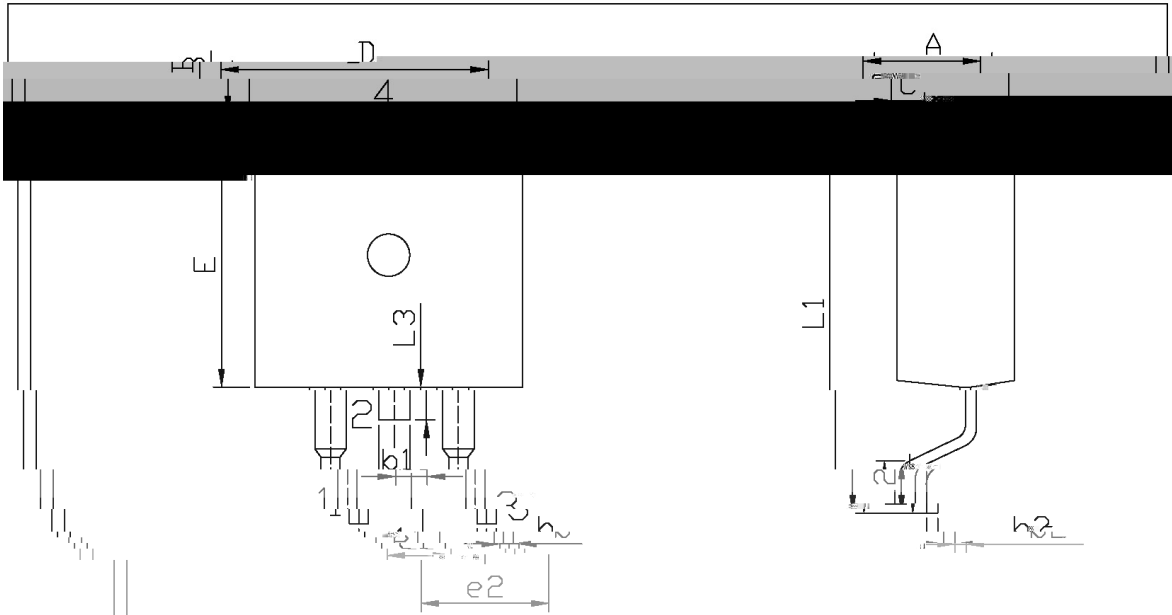
/Notes

1. /Short duration pulse test used to minimize self-heating effect.
2. / Unless otherwise noted, values for the parameters of a single chip.

/ Electrical Characteristic Curve



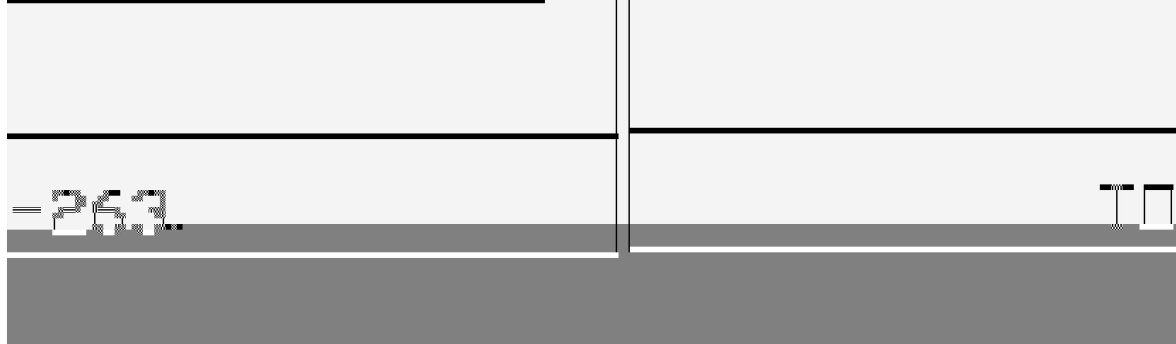
/ Package Dimensions



单位: mm

Dimensions in Millimeters

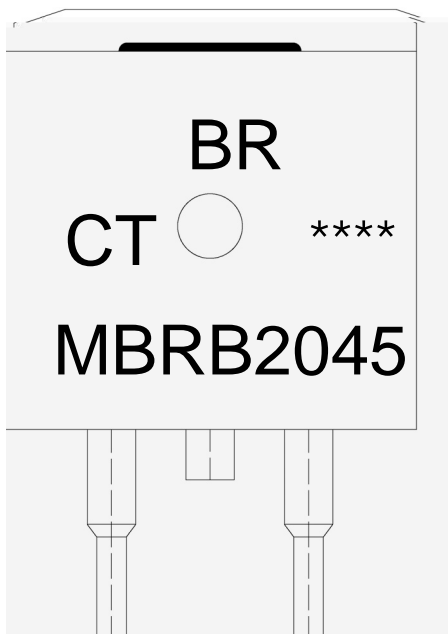
Max	Min	Max	Min
0.10	4.30	4.70	0.00
2.74	1.00	1.40	2.34



MBRB2045CT

Rev.E May.-2016

/ Marking Instructions



BR

MBRB2045

CT:

Note:

BR: Company Code

MBRB2045: Product Type.

CT: Internal Structure

****: Lot No. Code, code change with Lot No.

