

**MBRB3045CT**

Rev.A Nov.-2016

**DATA SHEET**

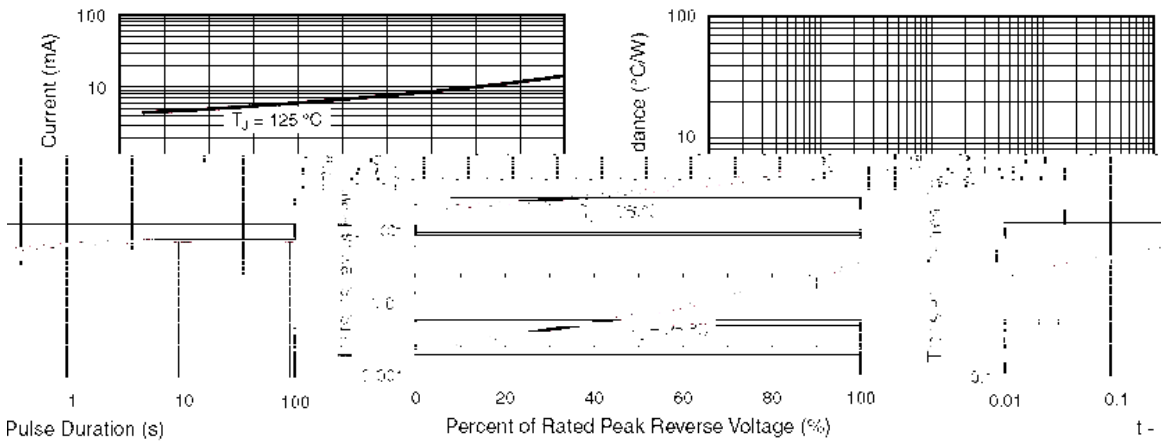
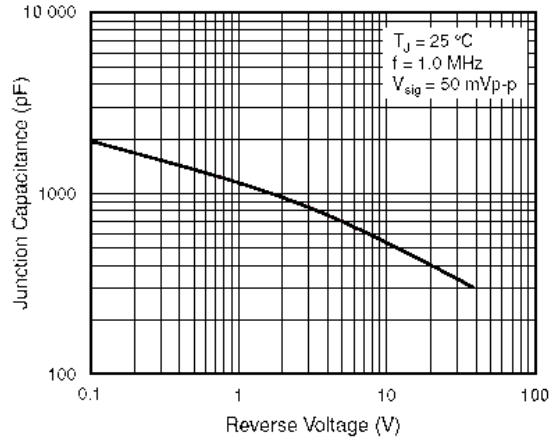
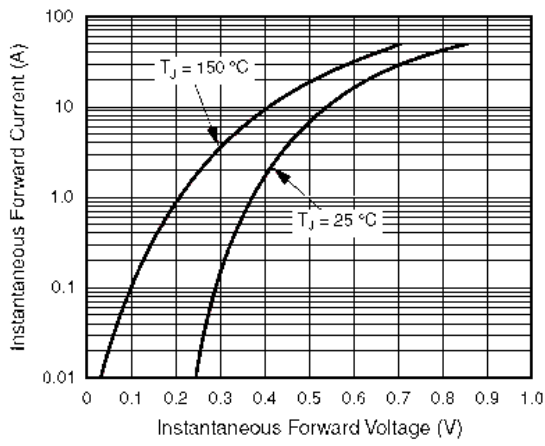
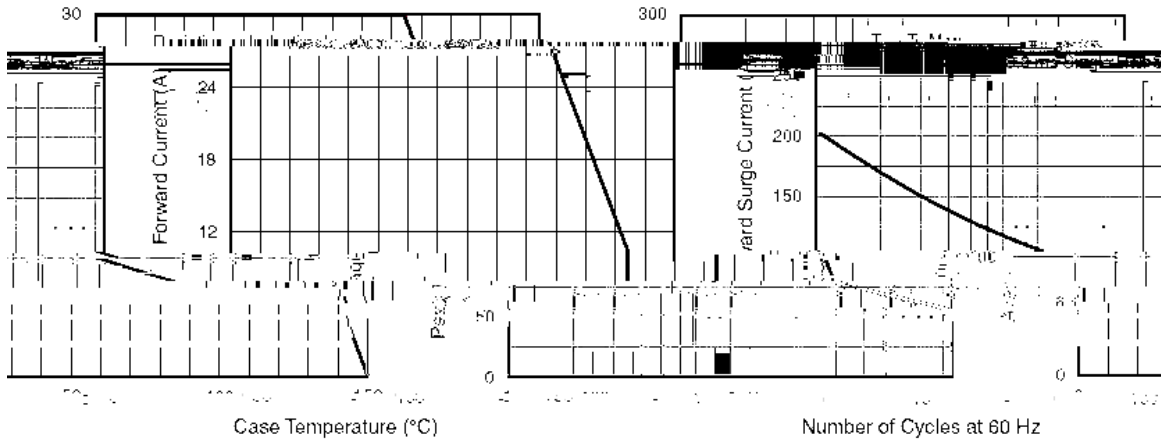
**/ Absolute Maximum Ratings(Ta=25 )**

Parameter	Symbol	Rating	Unit
Peak Repetitive Reverse Voltage	$V_{RRM}$	45	V
Peak Repetitive Forward Current	$I_{F(AV)}$	15	A
	$I_{F(AV)}$ total device	30	A
Non-Repetitive Peak Forward Surge Current	$I_{FSM}$	200	A
Repetitive Peak Reverse Surge Current	$I_{RRM}$	2.0	A
Thermal Resistance Junction to Case	$R_{JC}$	1.5	/W
Junction Temperature Range	$T_j$	150	
Storage Temperature Range	$T_{stg}$	-65 150	

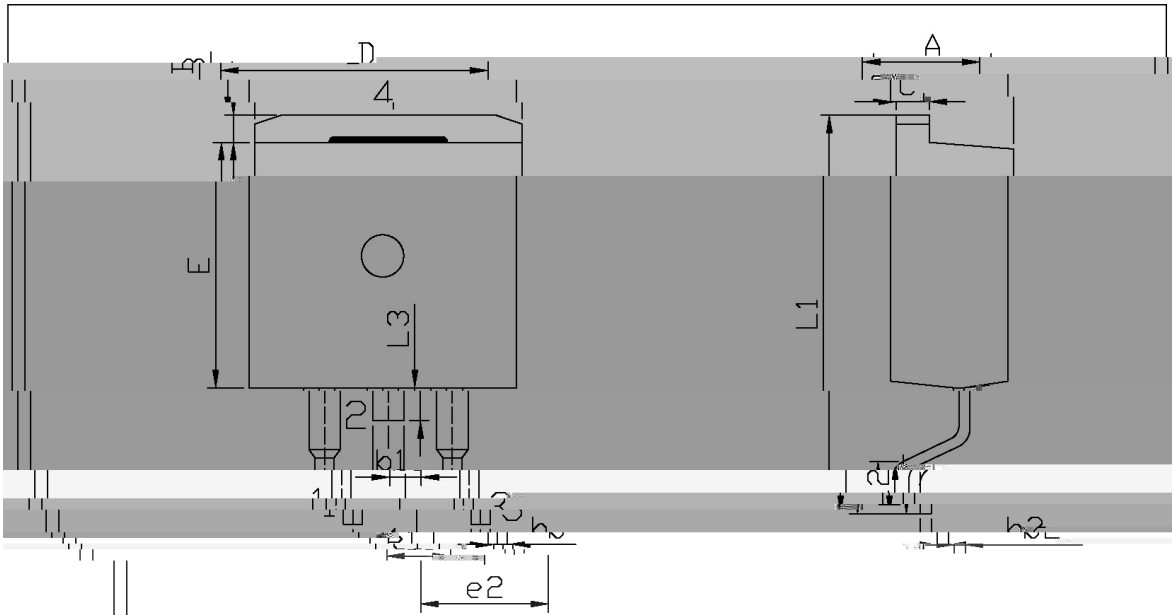
**/ Electrical Characteristics(Ta=25 )**

Parameter	Symbol	Test Conditions	Min	Typ	Max	Unit
Forward Voltage	$V_F$	$I_F=30A(T_c=25 )$			0.76	V
		$I_F=20A(T_c=125 )$			0.60	V
		$I_F=30A(T_c=125 )$			0.72	V
Instantaneous Reverse Current	$I_R$	$T_j=25$			1.0	mA
		$T_j=125$			60	mA
Voltage Rate of Change	dv/dt				10000	V/ s

**/ Electrical Characteristic Curve**



**/ Package Dimensions**



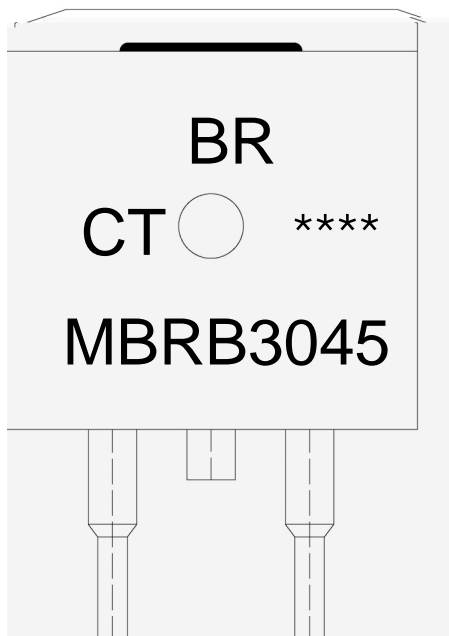
单位: mm

Dimensions	Min	Max	Dimensions	Min	Max
A	4.30	4.70	F	9.00	
B	1.00	1.40			
C	0.90	1.00			
D	1.00	1.40			
E	1.00	1.40			
L1	1.00	1.40			
L2	1.00	1.40			
L3	1.00	1.40			
L4	1.00	1.40			
L5	1.00	1.40			
L6	1.00	1.40			
L7	1.00	1.40			
L8	1.00	1.40			
L9	1.00	1.40			
L10	1.00	1.40			
L11	1.00	1.40			
L12	1.00	1.40			
L13	1.00	1.40			
L14	1.00	1.40			
L15	1.00	1.40			
L16	1.00	1.40			
L17	1.00	1.40			
L18	1.00	1.40			
L19	1.00	1.40			
L20	1.00	1.40			
L21	1.00	1.40			
L22	1.00	1.40			
L23	1.00	1.40			
L24	1.00	1.40			
L25	1.00	1.40			
L26	1.00	1.40			
L27	1.00	1.40			
L28	1.00	1.40			
L29	1.00	1.40			
L30	1.00	1.40			
L31	1.00	1.40			
L32	1.00	1.40			
L33	1.00	1.40			
L34	1.00	1.40			
L35	1.00	1.40			
L36	1.00	1.40			
L37	1.00	1.40			
L38	1.00	1.40			
L39	1.00	1.40			
L40	1.00	1.40			
L41	1.00	1.40			
L42	1.00	1.40			
L43	1.00	1.40			
L44	1.00	1.40			
L45	1.00	1.40			
L46	1.00	1.40			
L47	1.00	1.40			
L48	1.00	1.40			
L49	1.00	1.40			
L50	1.00	1.40			
L51	1.00	1.40			
L52	1.00	1.40			
L53	1.00	1.40			
L54	1.00	1.40			
L55	1.00	1.40			
L56	1.00	1.40			
L57	1.00	1.40			
L58	1.00	1.40			
L59	1.00	1.40			
L60	1.00	1.40			
L61	1.00	1.40			
L62	1.00	1.40			
L63	1.00	1.40			
L64	1.00	1.40			
L65	1.00	1.40			
L66	1.00	1.40			
L67	1.00	1.40			
L68	1.00	1.40			
L69	1.00	1.40			
L70	1.00	1.40			
L71	1.00	1.40			
L72	1.00	1.40			
L73	1.00	1.40			
L74	1.00	1.40			
L75	1.00	1.40			
L76	1.00	1.40			
L77	1.00	1.40			
L78	1.00	1.40			
L79	1.00	1.40			
L80	1.00	1.40			
L81	1.00	1.40			
L82	1.00	1.40			
L83	1.00	1.40			
L84	1.00	1.40			
L85	1.00	1.40			
L86	1.00	1.40			
L87	1.00	1.40			
L88	1.00	1.40			
L89	1.00	1.40			
L90	1.00	1.40			
L91	1.00	1.40			
L92	1.00	1.40			
L93	1.00	1.40			
L94	1.00	1.40			
L95	1.00	1.40			
L96	1.00	1.40			
L97	1.00	1.40			
L98	1.00	1.40			
L99	1.00	1.40			
L100	1.00	1.40			

# MBRB3045CT

Rev.A Nov.-2016

## / Marking Instructions



9|

D 9| 9\* +,

: K1

!!!!

Note:

BR: Company Code

MBRB3045 Product Type.

CT: Internal Structure

\*\*\*\*: Lot No. Code, code change with Lot No.

**MBRB3045CT**  
Rev.A Nov.-2016