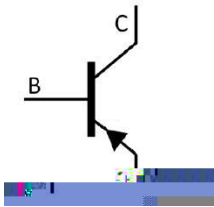


KF \$0)            GE G            Silicon PNP transistor in a TO-92 Plastic Package.

#            #            # D GJ 8+) >

High voltage low saturation, low collector output capacitance, complementary pair with MPSA42G. HF Product.

High voltage control circuit.



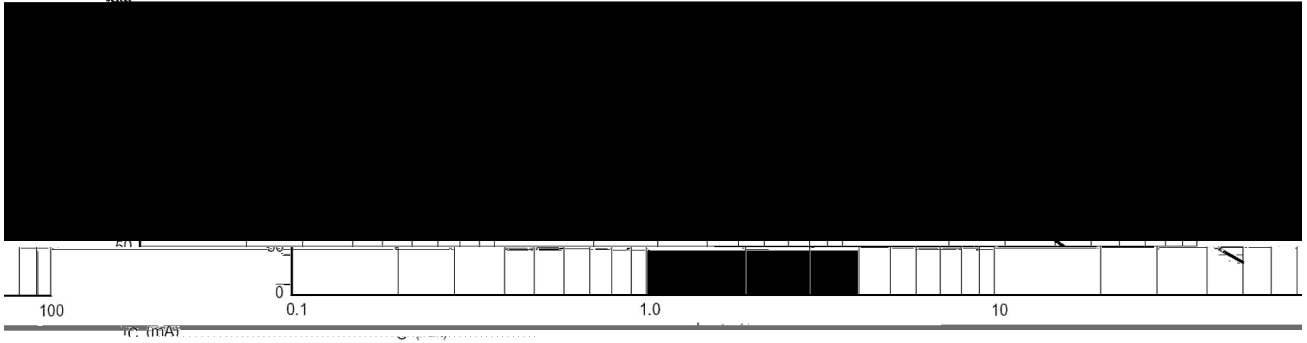
PIN1 Collector            PIN 2 Base            PIN 3 Emitter

Parameter	Symbol	Rating	Unit
Collector to Base Voltage	$V_{CBO}$	-300	V
Collector to Emitter Voltage	$V_{CEO}$	-300	V
Emitter to Base Voltage	$V_{EBO}$	-5.0	V
Collector Current - Continuous	$I_C$	-500	mA
Base Current - Continuous	$I_B$	-30	mA
Collector Power Dissipation	$P_C$	625	mW
Collector Power Dissipation	$P_C(T_C=25 \text{ }^\circ\text{C})$	1.5	W
Junction Temperature	$T_j$	150	
Storage Temperature Range	$T_{stg}$	-55 150	

Parameter	Symbol	Test Conditions	Min	Typ	Max	Unit
Collector to Base Breakdown Voltage	$V_{CBO}$	$I_C=-100$				

/ Electrical Characteristic Curve

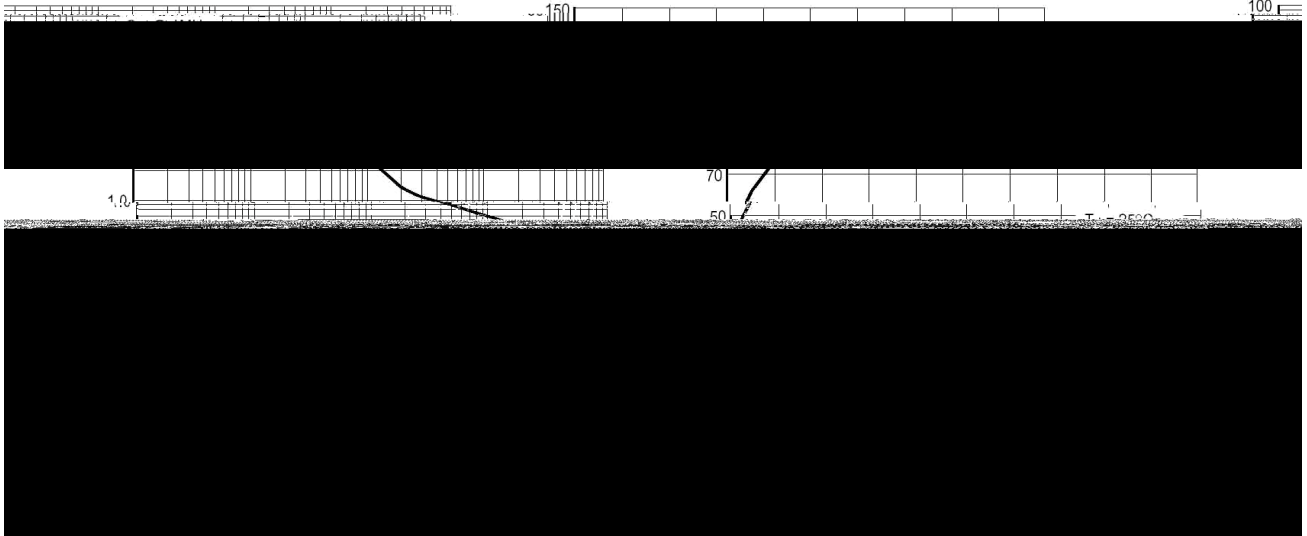
$h_{FE} - I_C$



$C_{ob} - V_{CB}$

$C_{ib} - V_{CB}$

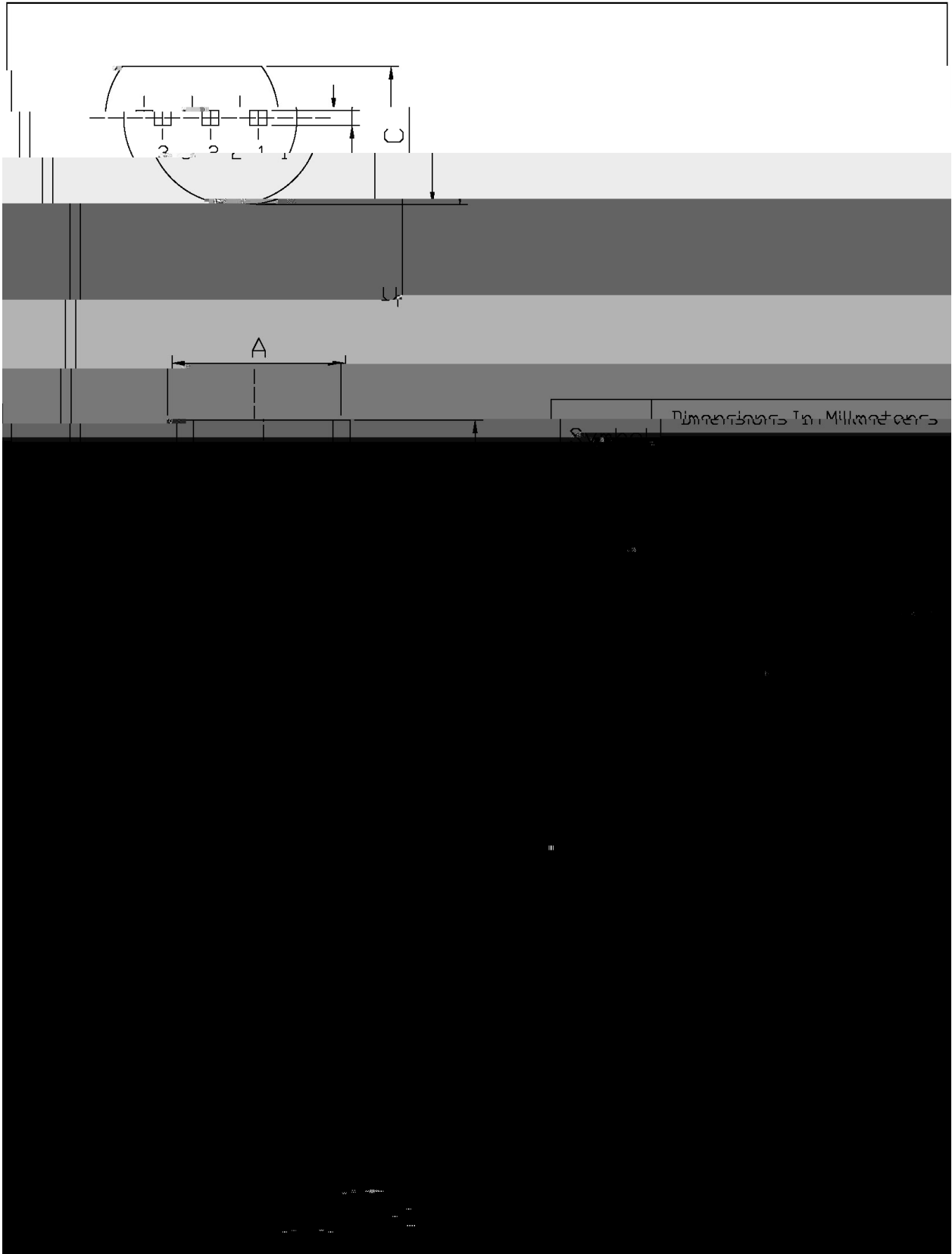
$f_T - I_C$



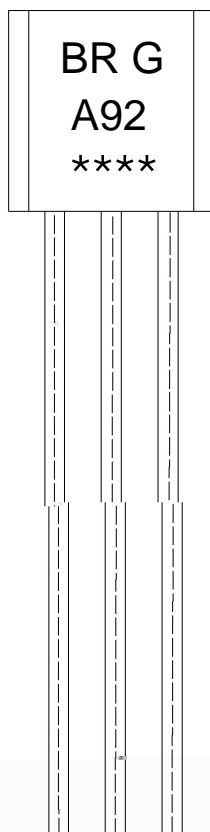
/ Package Dimensions

TO-92

Unit: mm



/ Marking Instructions



91 1

80)

>1

!!!!

Note:

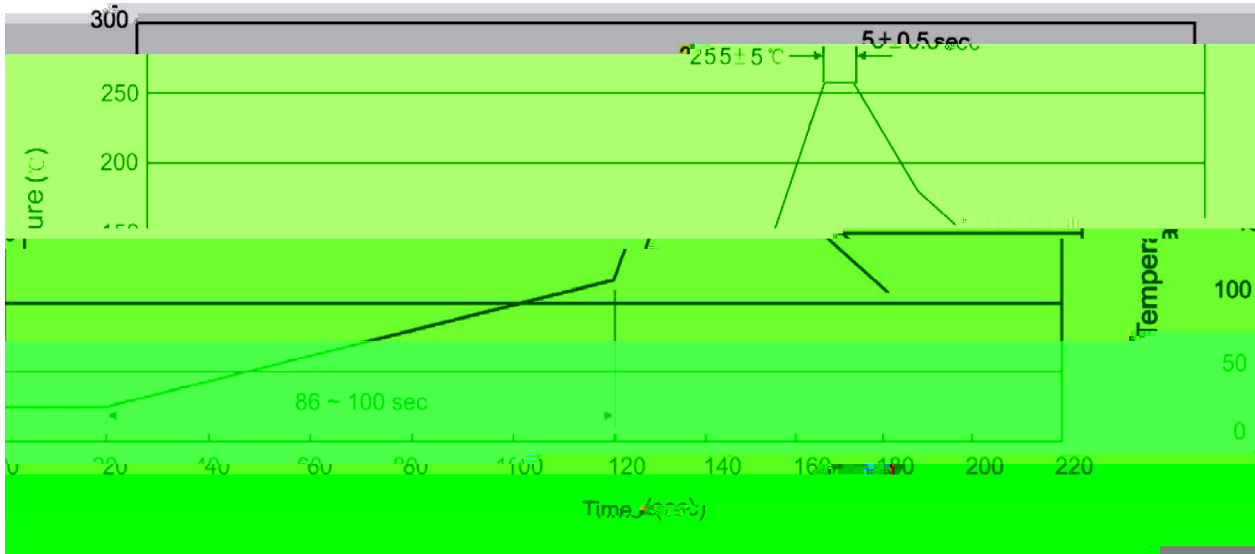
BR: Company Code.

A92: Product Type.

G: Halogen Free Product

\*\*\*\*: Lot No. Code,code change with Lot No.

( ) / Temperature Profile for Dip Soldering(Pb-Free)



Note:

- |   |        |     |            |          |   |
|---|--------|-----|------------|----------|---|
| 1 | 25     | 150 | 60         | 90sec;   | 1.Preheating:25~150 , Time:60~90sec.      |
| 2 | 255..5 |     | 5..0.5sec; |          | 2.Peak Temp.:255..5 , Duration:5..0.5sec. |
| 3 |        |     | 2          | 10 /sec. | 3. Cooling Speed: 2~10 /sec.              |

/ Resistance to Soldering Heat Test Conditions

270..5                      10...1 sec.                      Temp:270±5                      Time:10±1 sec

/ Packaging SPEC.

/ BULK

Package Type	Units					Dimension (unit mm3)		
	Units/Bag /	Bags/Inner Box /	Units/Inner Box /	Inner Boxes/Outer Box /	Units/Outer Box /	Bag	Inner Box	Outer Box
TO-92	1,000	10	10,000	5	50,000	135×190	237×172×102	560×245×195
	1,000	10	Bag6	re10	T8(600023	T8(410,590)5(	)3384237×172×79(102)5(	9173560×245