

TL431

Rev.G Jan.-2022

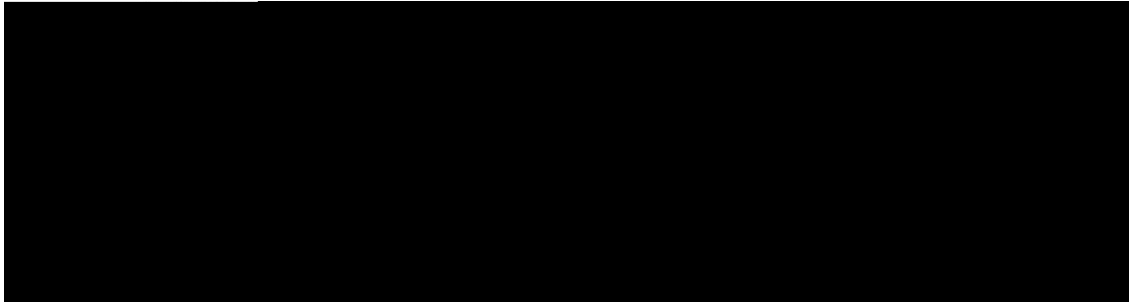
Precision adjustable shunt regulator in a TO-92 Plastic Package.

o

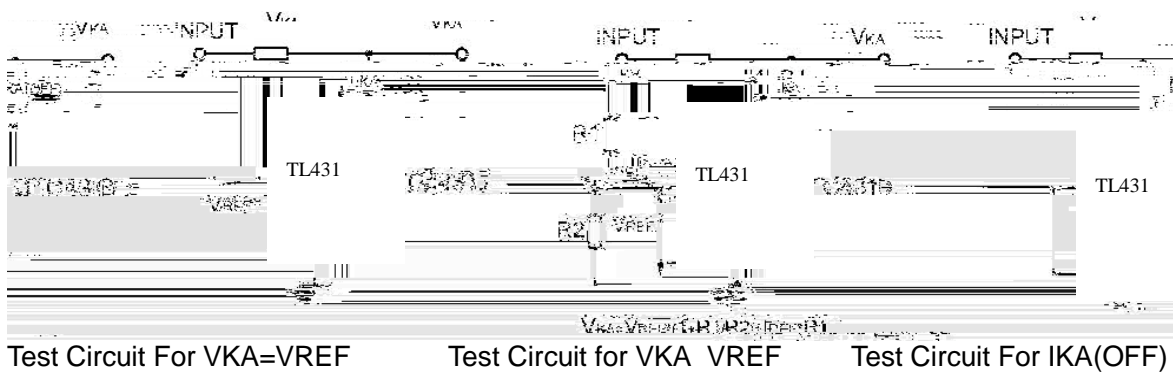
Parameter	E Symbol
Cathode to Anode Voltage	V_{KA}
Cathode Current nge, Continuous	7

& Test circuits&Typical Application

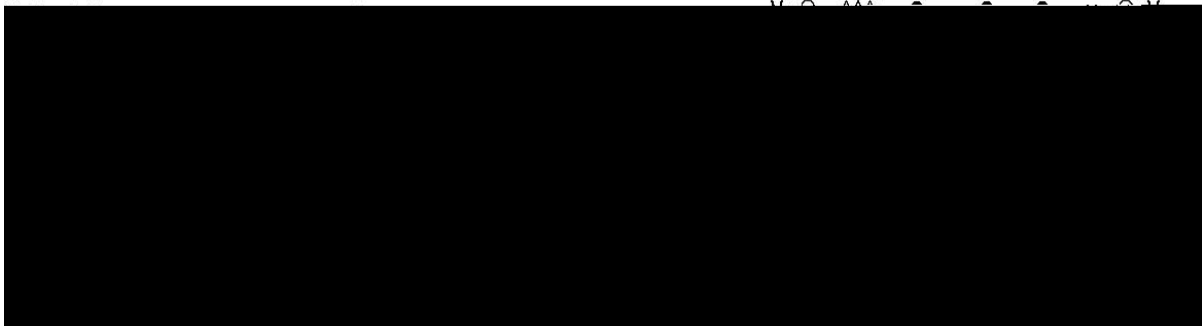
BLOCK DIAGRAM:



TEST CIRCUITS:

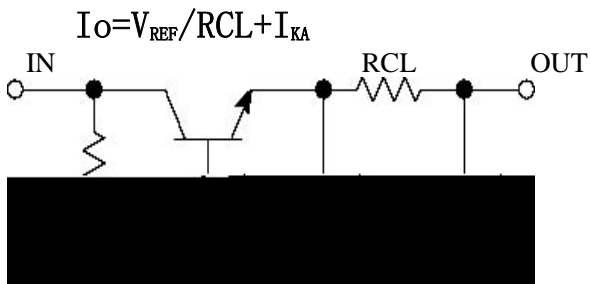


TYPICAL APPLICATION:

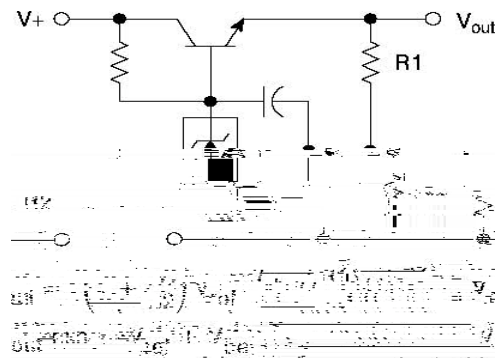


Shutdown Regulator

Higher-current Shunt

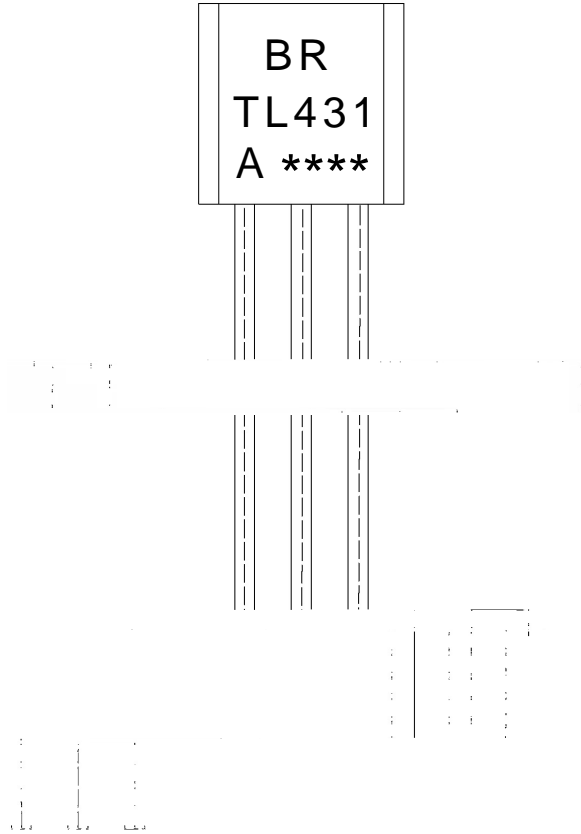


Constant Current Source



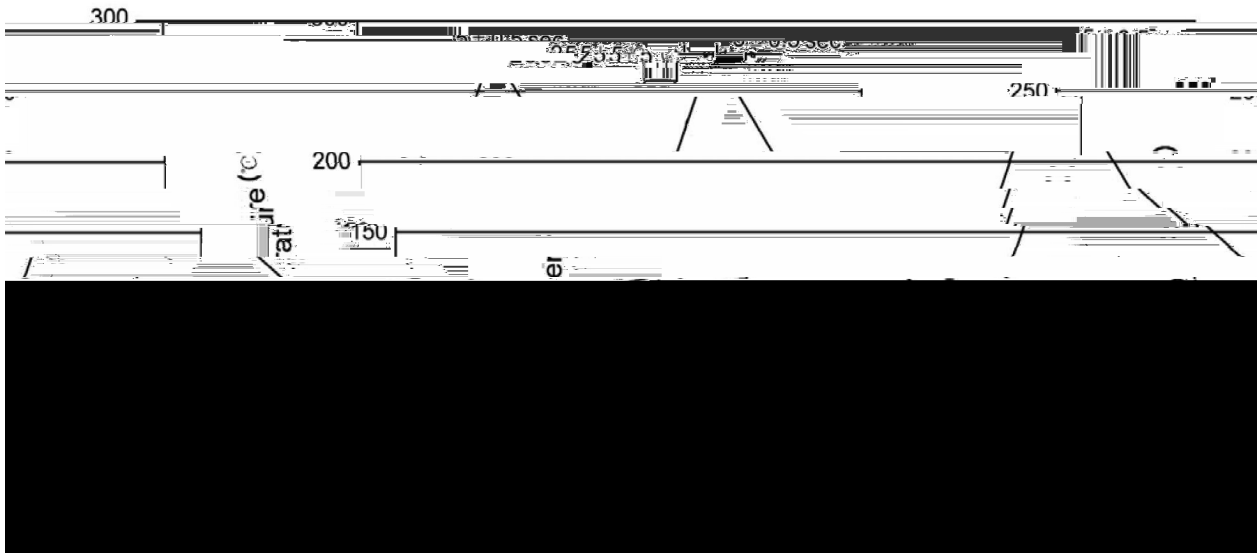
Series Pass Regulator

/ Marking Instructions



- BR
- TL431
- A: V_{REF}
- ****
- Note:
- BR: Company Code.
- TL431: Product Type.
- A: V_{REF} Classifications Symbol
- ****: Lot No. Code, code change with Lot No.

() / **Temperature Profile for Dip Soldering(Pb-Free)**



				Note:
1	25	150	60 90sec;	1.Preheating:25~150°C, Time:60~90sec.
2	255±5		5±0.5sec;	2.Peak Temp.:255±5°C, Duration:5±0.5sec.
3		2	10°C/sec.	3. Cooling Speed: 2~10°C/sec.

/ **Resistance to Soldering Heat Test Conditions**

270±5°C 10±1 sec. Temp:27