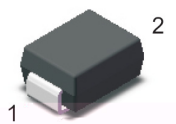


Rev.A Nov.-2017

Surface Mount Ultrafast Recovery Rectifier, Reverse Voltage:50 to1000V, Forward Current:1.0A, SMB package.

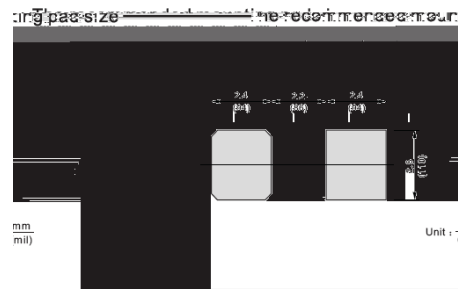
Glass Passivated Chip Junction High efficiency Lead free in comply with EU ROHS 2011/65/EU directives For surface mounted applications. Halogen free product.

General purpose.



PIN	DESCRIPTION
1	Cathode

node _____ 2 _____ Ai



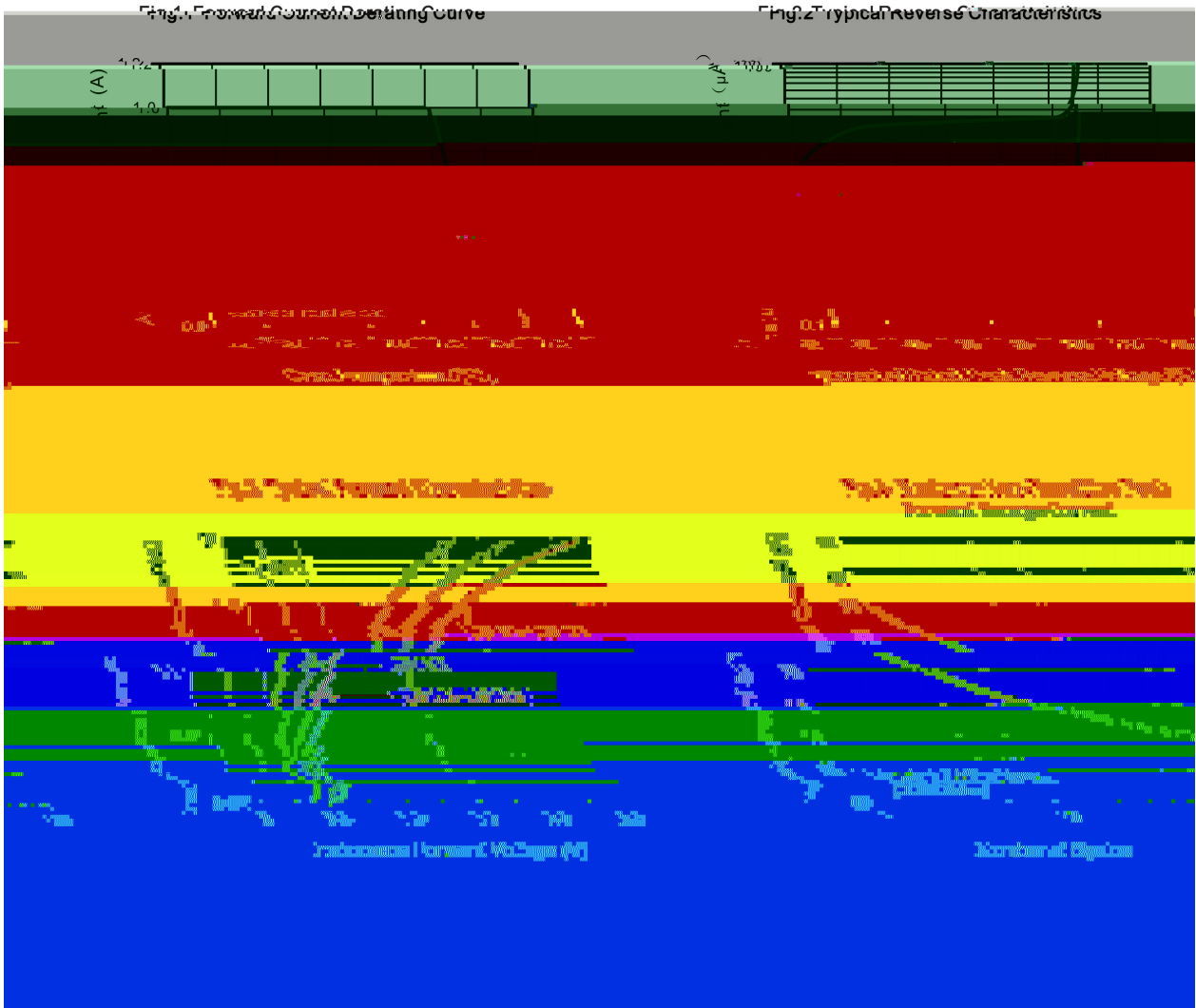
See Marking Instructions.

Parameter	Symbol	Rating							Unit
		US1AB	US1BB	US1DB	US1GB	US1JB	US1KB	US1MB	
Maximum Repetitive Peak Reverse Voltage	V_{RRM}	50	100	200	400	600	800	1000	V
Maximum RMS voltage	V_{RMS}	35	70	140	280	420	560	700	V
Maximum DC Blocking Voltage	V_{DC}	50	100	200	400	600	800	1000	V
Maximum Average Forward Rectified Current at $T_c = 125$	$I_{F AV}$	1.0							A
Peak Forward Surge Current 8.3 ms Single Half Sine Wave Superimposed on Rated Load	I_{FSM}	30							A
Typical Thermal Resistance ⁽¹⁾	R_{JA}	75							/W
Operating and Storage Temperature Range	T_j, T_{stg}	-55~+150							

Note:

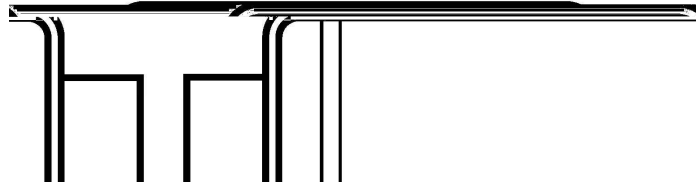
(1) P.C.B. mounted with 2.0 X 2.0" (5 X 5 cm) copper pad areass .

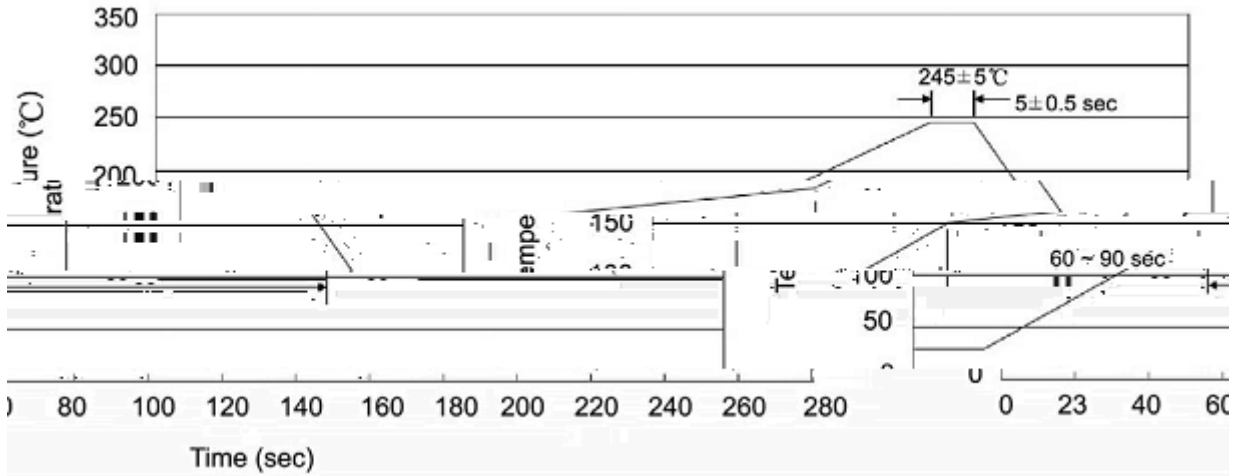
Parameter	Symbol	Test condition	Rating							Unit
			US1AB	US1BB	US1DB	US1GB	US1JB	US1KB	US1MB	
Maximum Instantaneous Forward Voltage	V_F	$I_F=1.0A$	1.0			1.3	1.65			V
Maximum DC Reverse Current at Maximum DC Blocking Voltage	I_R	$T_a=25$	5.0							uA
		$T_a=125$	100							
Maximum Reverse Recovery Time	T_{rr}	$I_F=0.5A$ $I_R=1.0A$ $I_{rr}=0.25A$	50				75			ns



Marking

Type number	Marking code
US1AB	US1A
US1BB	US1B
US1DB	US1D
US1GB	US1G
US1JB	US1J
US1KB	US1K
US1MB	US1M



Temperature Profile for IR Reflow Soldering (Pb-Free)

Note:

- | | | | | | |
|---|-----|-----|----|---------|--|
| 1 | 25 | 150 | 60 | 90sec; | 1. Preheating: 25~150 , Time: 60~90sec. |
| 2 | 245 | 5 | 5 | 0.5sec; | 2. Peak Temp.: 245 ± 5 , Duration: 5 ± 0.5sec. |
| 3 | | 2 | 10 | /sec. | 3. Cooling Speed: 2~10 /sec. |

260 ± 5 10 ± 1 sec. Temp.: 260 ± 5 Time: 10 ± 1 sec

/ REEL

Package Type 封装形式	Units 包装数量					Dimension 包装尺寸 (unit: mm ³)		
	Units/Reel 只/卷盘	Reels/Inner Box 卷盘/盒	Units/Inner Box 只/盒	Inner Boxes/Outer Box 盒/箱	Units/Outer Box 只/箱	Reel	Inner Box 盒	Outer Box 箱
SMB	3000	5	15000	5	75000	7 x11	185X180X105	390X385X205